



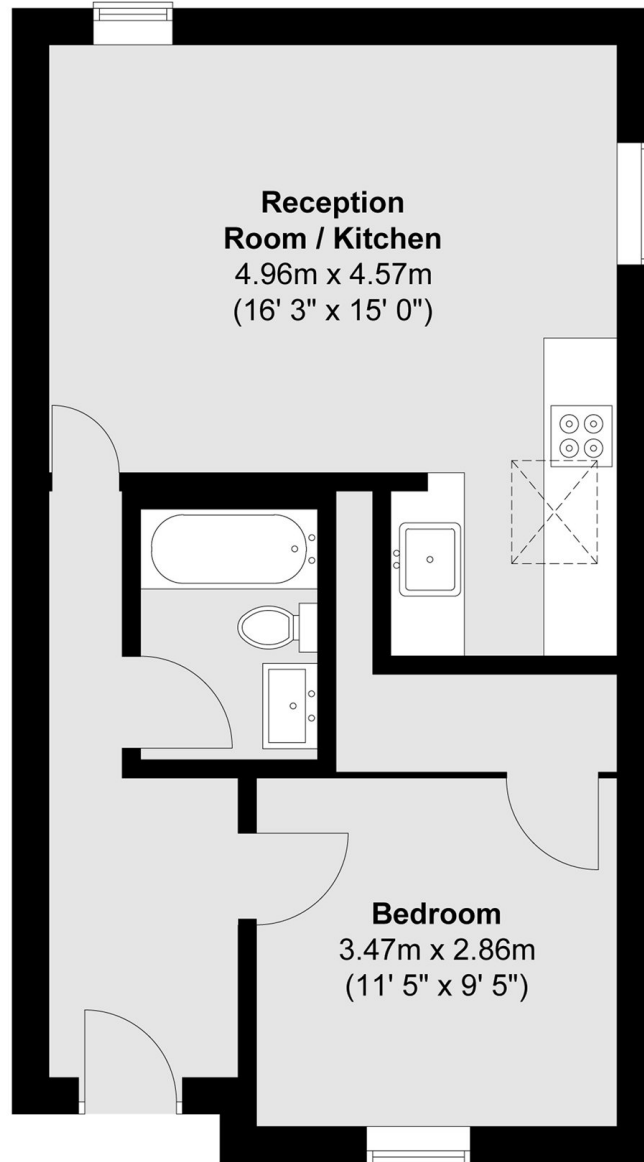
## DAVENTRY STREET, NW1

**£2,300 pcm**

Well presented one double bedroom flat situated on the top floor of a modern building. The property offers a open plan reception, modern integrated kitchen, tiled bathroom suite and further benefits from wood floors throughout.

- Top Floor Flat
- Spacious Double Bedroom
- Open Plan Reception
- Modern Integrated Kitchen
- Wood Floors
- Central Location

**Third Floor**



Total area (approx.) : 40.6 sq. m (437 sq. ft)

**LiFE RESIDENTIAL**

11 Flagstaff House, London,  
SW8 2LZ

Sales: 020 7476 1408

Lettings: 020 7582 7989

Energy Rating: C. We aim to make our particulars both accurate and reliable. However they are not guaranteed; nor do they form part of an offer or contract. If you require clarification on any points then please contact us, especially if you're traveling some distance to view. Please note that appliances and heating systems have not been tested and therefore no warranties can be given as to their good working order.