



## 40 London Road

Ewell, Surrey, KT17 2BB

**£1,950 Per Month**



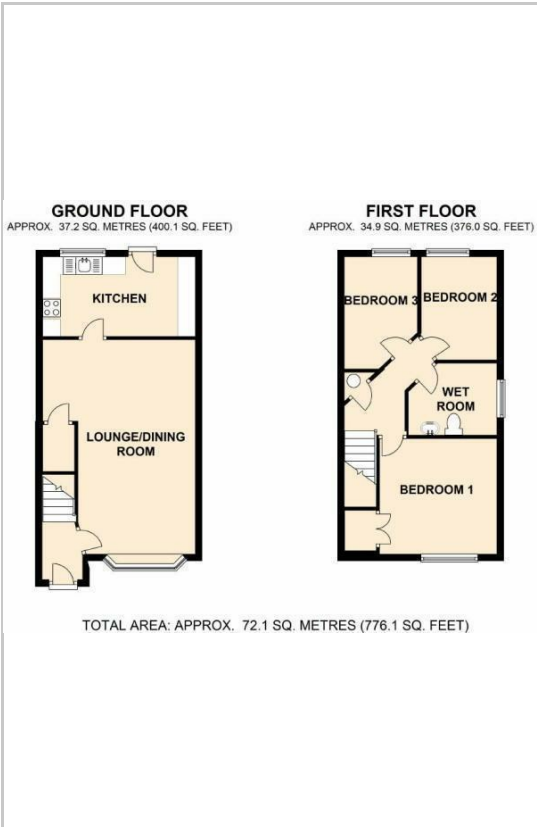
Thomas and May is Delighted to Offer to the Market this Newly Decorated Three Bedroom End of Terrace Home Located on the Edge of Ewell Village with its Two Mainline Rail Stations, Local Shops and Amenities. Accommodation Comprises 20' Lounge/Dining Room, New Fitted Kitchen, Three Bedrooms and a Bathroom. The Property also Benefits from Front and Rear Gardens, Off Street Parking, a Garage to the Rear. Available Now



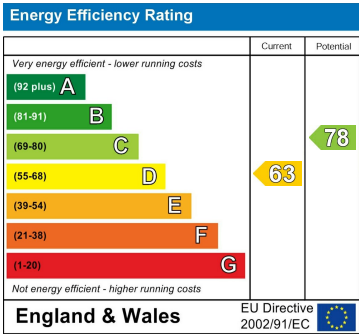
## Area Map



## Floor Plans



## Energy Efficiency Graph



These particulars, whilst believed to be accurate are set out as a general outline only for guidance and do not constitute any part of an offer or contract. Intending purchasers should not rely on them as statements of representation of fact, but must satisfy themselves by inspection or otherwise as to their accuracy. No person in this firm's employment has the authority to make or give any representation or warranty in respect of the property.