



Hamilton Road, W5

£1,025,000

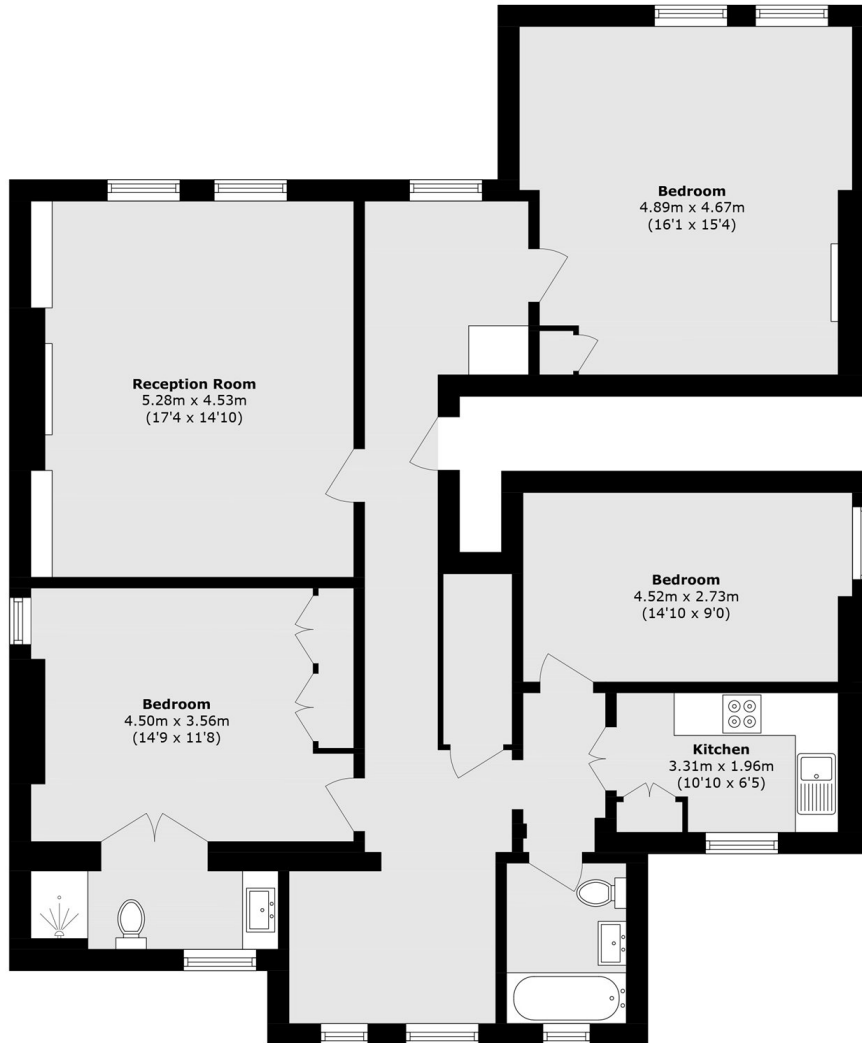
Occupying the entire first floor, this impressive three double bedroom, two bathroom apartment benefits from a share of the freehold and offers generous proportions throughout. Rich in character, the property features high ceilings, elegant original cornicing, ceiling roses, and attractive feature fireplaces, all of which enhance its period charm.

Located on Hamilton Road, just moments from Ealing Broadway station, with access to the Elizabeth line, Central line and District line. Ealing Common is also a short walk away, along with the wide range of shops, restaurants, gyms and everyday amenities that Ealing Broadway has to offer.

Features

- Three Bedrooms
- Two Bathrooms
- No Onward Chain
- First Floor
- Share Of Freehold
- Close To Station

Hamilton Road, London, W5



Total area (approx.): 121.1 sq. m (1303.5 sq. ft)