

for sale

guide price **£150,000** Leasehold



Marquis Court Earls Meade Luton LU2 7LG

Offered with NO UPPER CHAIN - Tenant in Situ!!!

Earls Meade a superb development of apartments situated within the sought after Old Bedford road Luton.

This Two bedroom flat is a great choice for
Residential Sales & Lettings | Mortgage Services |
Conveyancing | Surveyors | Land & New Homes



Property Details

Entrance

Communal Entrance. Stairs rising to first floor

Entrance Hall

Door to front.

Lounge 15' 2" x 12' 6" (4.62m x 3.81m)

Double glazed windows to front. Juliet Balcony. Storage heater.

Kitchen 8' 9" x 6' 6" (2.67m x 1.98m)

Fitted with all and base units. Stainless steel sink drainer. Work surfaces. Electric oven and hob. Partly tiled. Cooker hood. Plumbing and space for appliances.

Bedroom One 12' 1" x 10' 1" (3.68m x 3.07m)

Double glazed window to front. Built in cupboard. Storage heater.

Bedroom Two 9' 2" x 9' (2.79m x 2.74m)

Double glazed window to front. Storage heater.

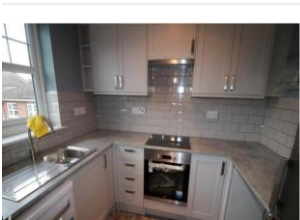
Bathroom

Fitted with low level wc. Wash hand basin. Bath with mixer taps and shower attachment. Shaver point. Extractor fan. Partly tiled.

Outside

Communal Garden

Communal Parking



To view this property please contact Connells on

T 01582 450 999
E luton@connells.co.uk

83-83A George Street
LUTON LU1 2AT

Property Ref: LUT316921 - 0010

Tenure:Leasehold EPC Rating: C

Council Tax Band: C Service Charge: 2170.00

Ground Rent: Ask Agent

This is a Leasehold property with details as follows; Term of Lease 125 years from 24 Jun 1988. Should you require further information please contact the branch. Please Note additional fees could be incurred for items such as Leasehold packs.

1. MONEY LAUNDERING REGULATIONS Intending purchasers will be asked to produce identification documentation at a later stage and we would ask for your co-operation in order that there will be no delay in agreeing the sale. 2. These particulars do not constitute part or all of an offer or contract. 3. The measurements indicated are supplied for guidance only and as such must be considered incorrect. Potential buyers are advised to recheck measurements before committing to any expense. 4. We have not tested any apparatus, equipment, fixtures, fittings or services and it is in the buyers interest to check the working condition of any appliances.

Connells Residential is registered in England and Wales under company number 1489613, Registered Office is Cumbria House, 16-20 Hockliffe Street, Leighton Buzzard, Bedfordshire, LU7 1GN. VAT Registration Number is 500 2481 05.

see all our properties at www.connells.co.uk | www.rightmove.co.uk | www.zoopla.co.uk