



STRATHLEVEN ROAD, SW2

£770,000

- Terraced house
- Three bedrooms
- Freehold
- Garden
- Popular location
- Energy rating: C

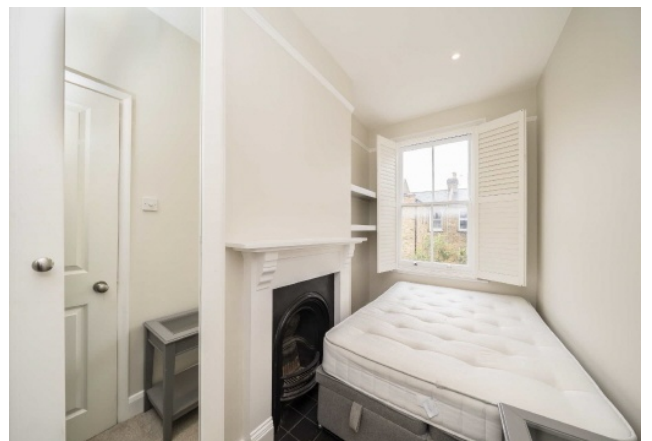




ABOUT THE HOME

A stylish three bedroom Victorian terraced house on a peaceful residential road situated between Clapham and Brixton. Arranged over three floors the accommodation comprises two double bedrooms, a third bedroom, reception room and separate dining room, modern fitted kitchen and a family bathroom. Offered to market chain free and in excellent decorative order, the property retains many original features and also benefits from a low maintenance patio garden.

Strathleven Road is a quiet residential road popular for its close proximity to both Brixton and Clapham town centres. Residents enjoy a wealth of local amenities including the open expanses of Brockwell Park and Clapham Common, along with the many shops, cafés and restaurants of Clapham, Abbeville Village and Brixton. Commuting options include Clapham North (Northern line) Underground/Clapham High Street (Windrush line) Overground (0.7 mile) and Brixton (Victoria line) Underground/mainline (0.7 mile).







Total area (approx.): 82.2 sq. m (884.8 sq. ft)

JACKSONS CLAPHAM

73 Abbeville Road, London,
SW4 9JN
Sales: 020 8487 3177
Lettings: 020 8487 3178

Energy Rating: C We aim to make our particulars both accurate and reliable. However they are not guaranteed; nor do they form part of an offer or contract. If you require clarification on any points then please contact us, especially if you're traveling some distance to view. Please note that appliances and heating systems have not been tested and therefore no warranties can be given as to their good working order.