



## THE TOWER, SW8

£21,667 pcm

A stunning three bedroom, four bathroom apartment in one of London's iconic landmark skyscraper. Featuring bespoke joinery, marble finishes & floor to ceiling windows with breathtaking views. 24hr concierge, valet parking, pool & spa. A true benchmark in luxury living.

- Three Bedroom Apartment
- Over 3300 Sq.Ft
- Concierge Service
- Leisure and Business Facilities
- On-site Gym and Swimming Pool

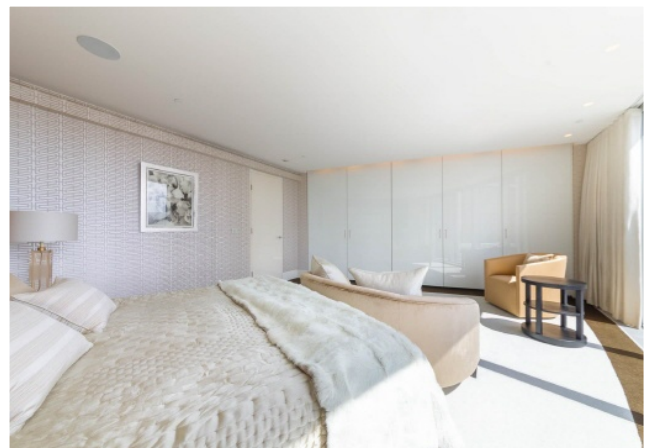


## ABOUT THE HOME

The Tower sets a new benchmark in specification and finish. This stunning apartment boasts an exacting standard with high end fixtures and fittings. Full height windows to all rooms offer breath taking views across Nine Elms, the Thames, Pimlico and along to the London Eye.

The Tower provides a dedicated 24 hour concierge service, valet parking and an array of luxurious facilities including media centre, pool, spa and treatment rooms.

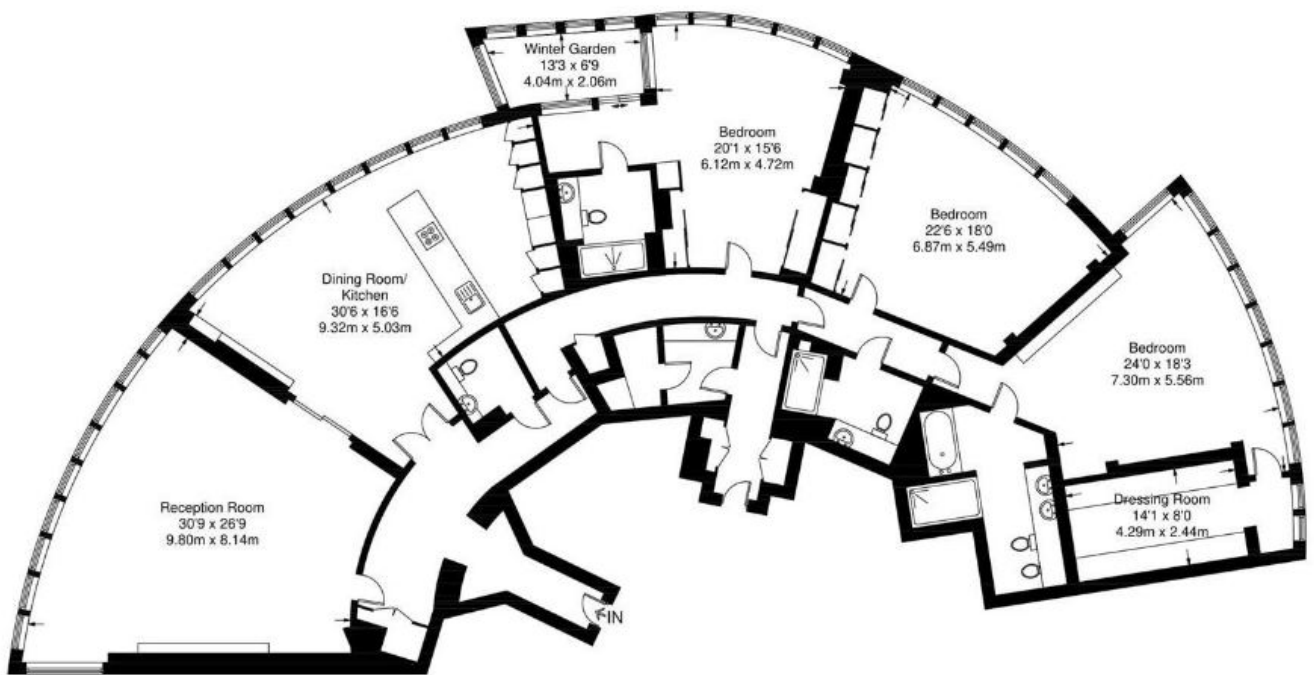
Located in vibrant St George Wharf, The Tower offers easy access to Battersea Power Station's fine dining, cafés & boutique shops. Excellent transport links provide swift connections across London.





### The Tower

Total Area (Including Winter Garden) = 3236 sq ft / 300.6 sq m  
Approximate Gross Internal Area = 3165 sq ft / 294 sq m  
Winter Garden = 71 sq ft / 6.6 sq m



### LiFE RESIDENTIAL

11 Flagstaff House, London,  
SW8 2LZ

Sales: 020 7476 1408

Lettings: 020 7582 7989

Energy Rating: B. We aim to make our particulars both accurate and reliable. However they are not guaranteed; nor do they form part of an offer or contract. If you require clarification on any points then please contact us, especially if you're traveling some distance to view. Please note that appliances and heating systems have not been tested and therefore no warranties can be given as to their good working order.