



Red Oaks Mead, Epping, CM16 7LA
£900,000

Jenkins Property

T: 01277228620

E: SALES@JENKINS-PROPERTY.COM

WWW.JENKINS-PROPERTY.COM

Jenkins Property

Red Oaks Mead is a splendid house offering a perfect blend of comfort and elegance. With four spacious bedrooms, this property is ideal for families. The three well-appointed reception rooms provide ample space for both relaxation and entertaining, making it easy to host gatherings or enjoy quiet evenings at home.

The house boasts three modern bathrooms, ensuring convenience for all residents and guests. Each room is designed with a thoughtful layout, allowing for natural light to fill the spaces, creating a warm and inviting atmosphere.

Theydon Bois is known for its picturesque surroundings and friendly neighbourhood, making it a desirable location for those who appreciate both nature and community spirit. With easy access to local amenities and transport links, this property is not only a beautiful home but also a practical choice for modern living.

This house in Red Oaks Mead is a rare find, offering a wonderful opportunity to enjoy a comfortable lifestyle in a sought-after area. Whether you are looking to settle down or invest, this property is sure to impress.

- Popular position
- Four bedrooms
- Three bathrooms
- No onward chain
- Home office
- Semi Detached
- Three receptions
- Off road parking for several vehicles
- Well presented

Hallway 8'9" x 16'2" (2.69 x 4.93)

Kitchen Dining room 23'10" x 16'3" (7.28 x 4.97)

Living Room 16'10" x 10'3" (5.15 x 3.14)

Study 8'11" x 8'3" (2.72 x 2.53m)

Sitting Room 11'6" x 14'3" (3.52 x 4.35)

Utility Room 8'11" x 8'3" (2.72 x 2.53m)

WC 5'10" x 3'2" (1.78 x 0.99)

Landing

Master Bedroom 12'0" x 12'6" (3.68 x 3.83)

Bedroom 15'1" x 10'5" (4.60 x 3.20)

Bathroom 7'5" x 4'6" (2.27 x 1.38)

Bedroom 14'10" x 8'3" (4.53 x 2.52)

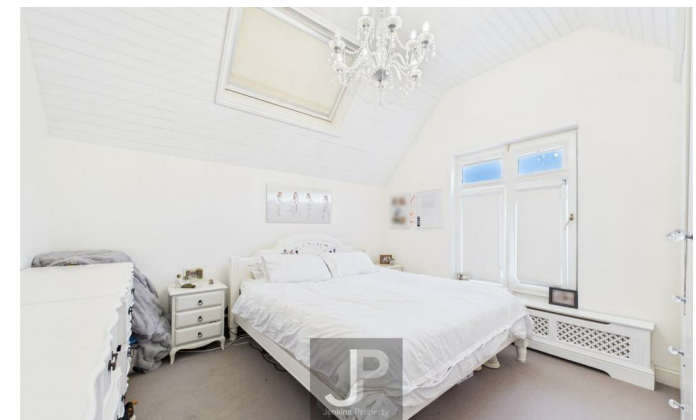
Bedroom 8'9" x 10'3" (2.69 x 3.14)

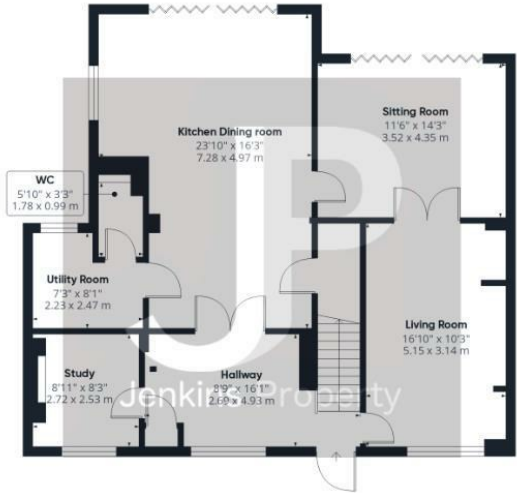
Bathroom 7'9" x 8'10" (2.38 x 2.70)

Exterior

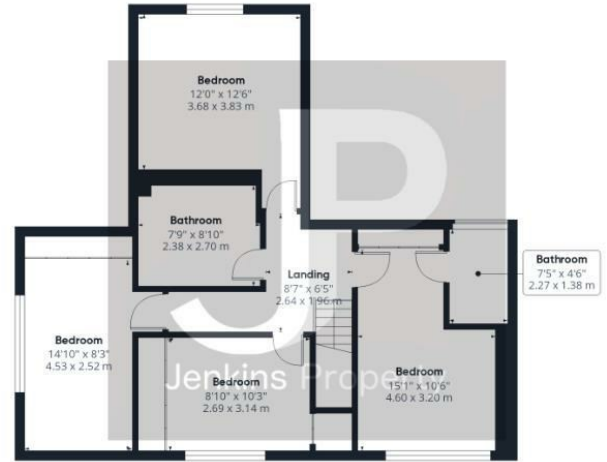
Off Road parking for several vehicles

Low maintenance rear garden





Ground Floor



Floor 1

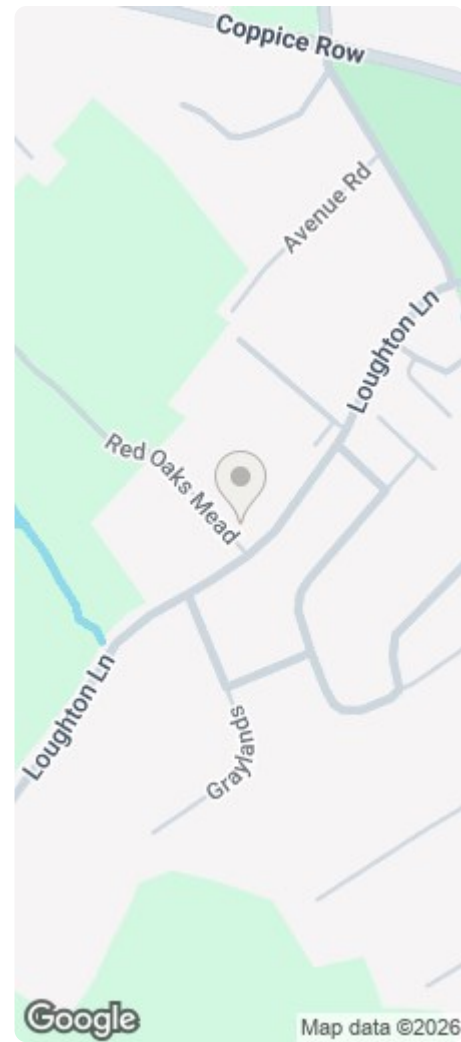


Approximate total area⁽¹⁾
1729 ft²
160.7 m²

(1) Excluding balconies and terraces

Calculations reference the RICS IPMS 3C standard. Measurements are approximate and not to scale. This floor plan is intended for illustration only.

GIRAFFE 360



Energy Efficiency Rating		Environmental Impact (CO ₂) Rating	
Current	Potential	Current	Potential
Band A	Band A	Band A	Band A
Band B	Band B	Band B	Band B
Band C	Band C	Band C	Band C
Band D	Band D	Band D	Band D
Band E	Band E	Band E	Band E
Band F	Band F	Band F	Band F
Band G	Band G	Band G	Band G

Not energy efficient - higher running costs
 Not environmentally friendly - higher CO₂ emissions
 England & Wales EU Directive 2002/91/EC

