



5 Canon Street, Barry

Barry

Guide Price £275,000



## 5 Canon Street

Barry, Barry

Three-bedroom mid-terraced house in West End with loft room, south-facing garden, and no chain. Needs modernisation. Close to schools, shops, and transport. Ideal for families or investors.

Council Tax band: D

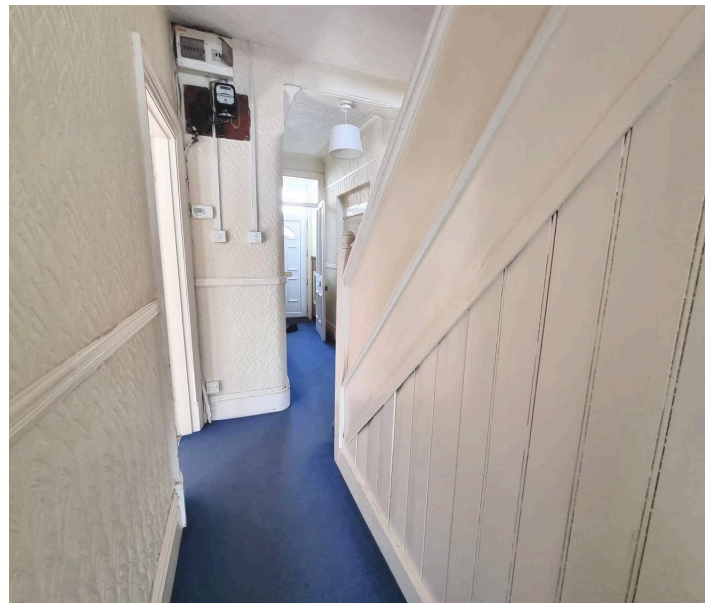
Tenure: Freehold

EPC Energy Efficiency Rating: D

EPC Environmental Impact Rating:

- WEST END LOCATION
- THREE BEDROOMS
- LOFT ROOM
- SOUTH FACING GARDEN
- IN NEED OF MODERNISATION
- CLOSE TO LOCAL AMENITIES
- GOOD SCHOOL CATCHMENTS AREA
- NO ONGOING CHAIN





### **Hallway**

Enter through a UPvc door with glazed panels into inner porch. Half original tiling to walls. Half glazed door into :- hallway. Fitted carpet, radiator, Dado rail. Staircase rising to first floor with fitted carpet and spindled balustrade. Doors into :-

### **Lounge/Dining Room**

11' 9" x 25' 1" (3.58m x 7.65m)

A dual aspect room with bay window to front and further double glazed window to the rear. Fitted carpet, neutral décor. Radiator. Feature brick fireplace.

### **Kitchen/Breakfast Room**

23' 9" x 10' 5" (7.24m x 3.18m)

Vinyl flooring. A range of base units with complementing work surface. Inset double drainer sink. Spaces for washing machine and fridge/freezer. Radiator. Windows to both side and rear. Door giving access to rear garden.

### **Landing**

Fitted carpet. dado rail. Staircase rising to loft room. Doors into :-

### **Bedroom One**

10' 9" x 15' 8" (3.28m x 4.78m)

Fitted carpet, radiator. Neutral décor. Two windows to front elevation.

### **Bedroom Two**

9' 9" x 10' 7" (2.97m x 3.23m)

Fitted carpet. Window to rear. Radiator. Original cast iron fireplace. Built in cupboard.

### **Bedroom Three**

11' 9" x 10' 6" (3.58m x 3.20m)

Fitted carpet, neutral décor. Wall mounted combination boiler. Window to rear with views across the Bristol channel. Radiator. Original cast iron fireplace.

### **Shower Room**

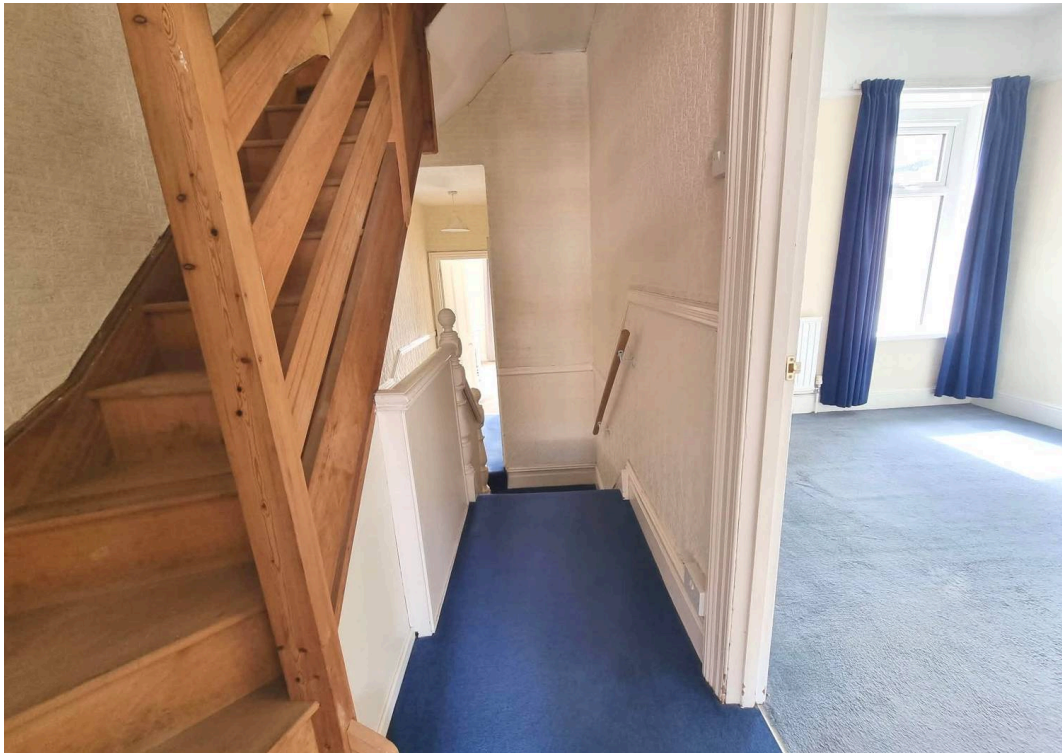
7' 3" x 6' 1" (2.21m x 1.85m)

Vinyl flooring. Close coupled WC, pedestal wash hand

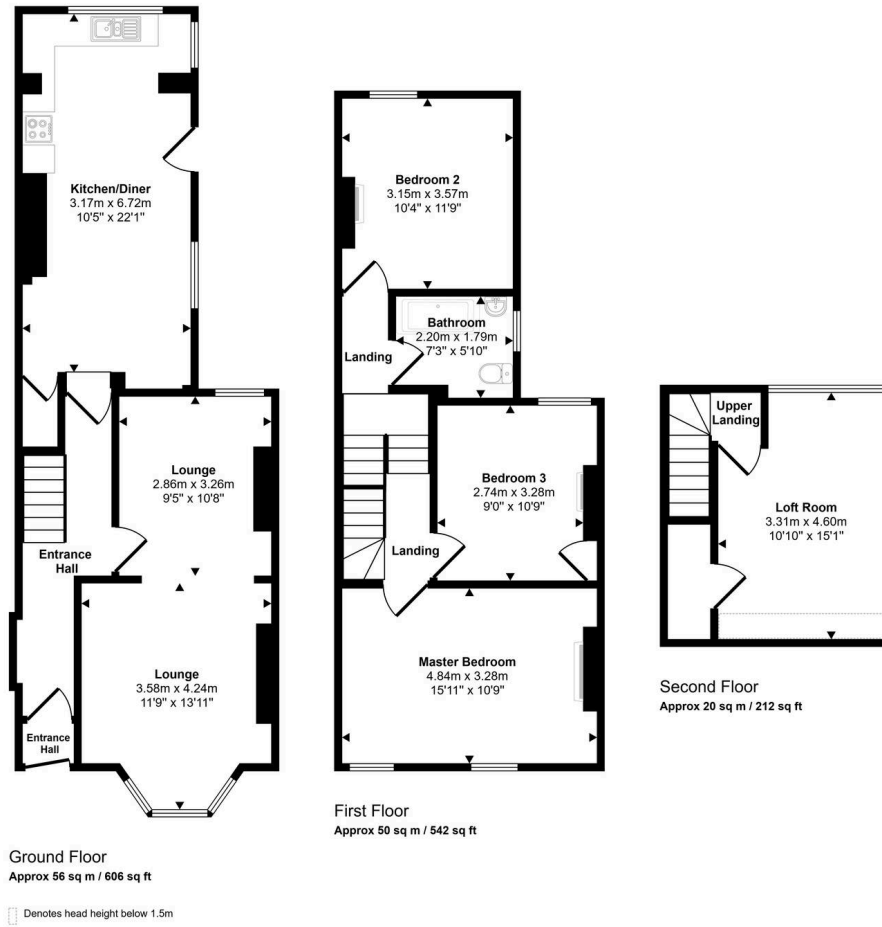
## GARDEN

An enclosed southerly facing garden. Mainly laid to lawn. Paved patio area. Mature planting. Gate giving rear lane access. Outside tap.





Approx Gross Internal Area  
126 sq m / 1360 sq ft



This floorplan is only for illustrative purposes and is not to scale. Measurements of rooms, doors, windows, and any items are approximate and no responsibility is taken for any error, omission or mis-statement. Icons of items such as bathroom suites are representations only and may not look like the real items. Made with Made Snappy 360.

# Daniel Matthew Estate Agents Barry

14 High Street Barry, Vale of Glamorgan - CF62 7EA

01446502806

barry@danielmatthew.co.uk

www.danielmatthew.co.uk/

**DanielMatthew**  
ESTATE AGENTS