

Wheatsheaf Way, Knighton Fields

£165,000

Located within the iconic Wheatsheaf building is this superb SECOND FLOOR apartment boasting open plan living. Featuring a STYLISH open plan fitted living dining kitchen and MEZZANINE AREA.

Council Tax band: B

Tenure: Leasehold

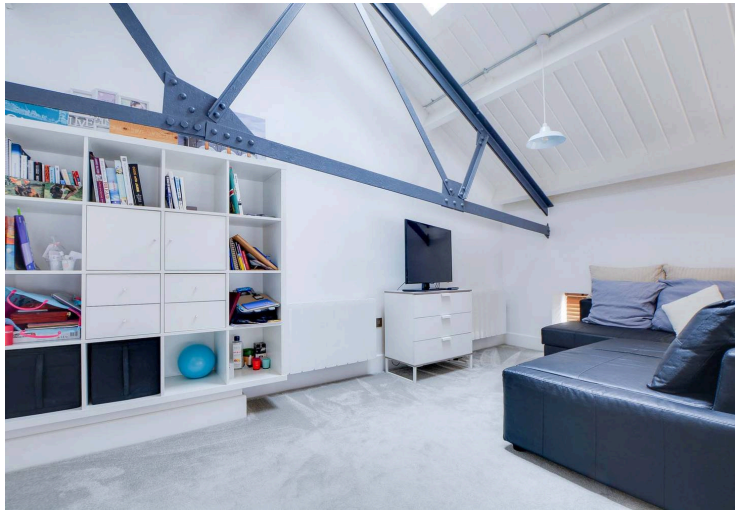
EPC Energy Efficiency Rating: D



Knightsbridge
Estate Agents

0116 274 5544





Entrance Hall

With access to the open plan fitted living dining kitchen.

Open Plan Fitted Living Dining Kitchen

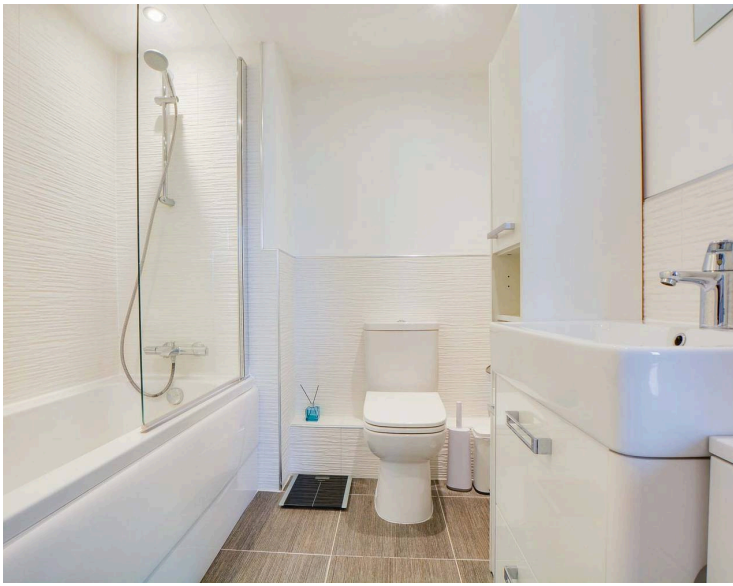
15' 9" x 15' 10" (4.81m x 4.82m)

With double glazed windows to the rear and side elevations, wood effect floor, a range of wall and base units with work surface over, stainless steel sink and drainer, part tiled walls, integrated four ring ceramic hob, extractor hood and integrated oven, stainless steel splashback, integrated fridge, integrated freezer, built-in cupboard, stairs to mezzanine area.

Mezzanine Area

14' 10" x 12' 6" (4.52m x 3.80m)

narrowing to 2.46 m. With exposed iron girders, tongue and groove cladding, built-in cupboard, glazed balcony overlooking the living dining kitchen.



Bedroom

11' 9" x 7' 11" (3.58m x 2.42m)

Maximum measurements. With double glazed window to the front elevation, a range of built-in wardrobes.

Bathroom

7' 4" x 6' 7" (2.23m x 2.00m)

With bath, mixer shower over and shower screen, low-level WC, wash hand basin with storage below, additional storage cupboard, part tiled walls, chrome ladder towel rail/radiator.

Allocated Parking

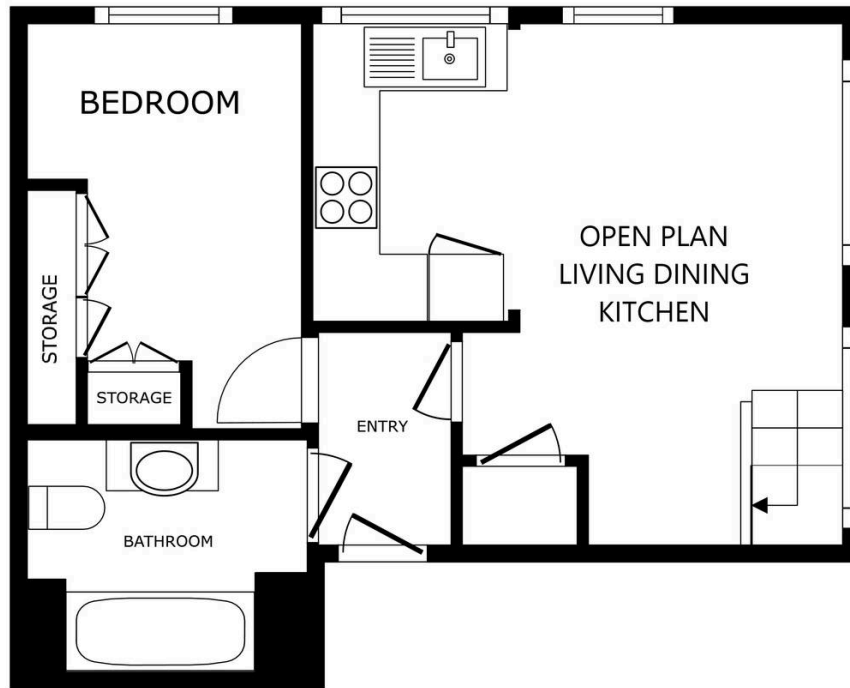
1 Vehicle

Lease Details

Current Ground Rent: £150 per annum

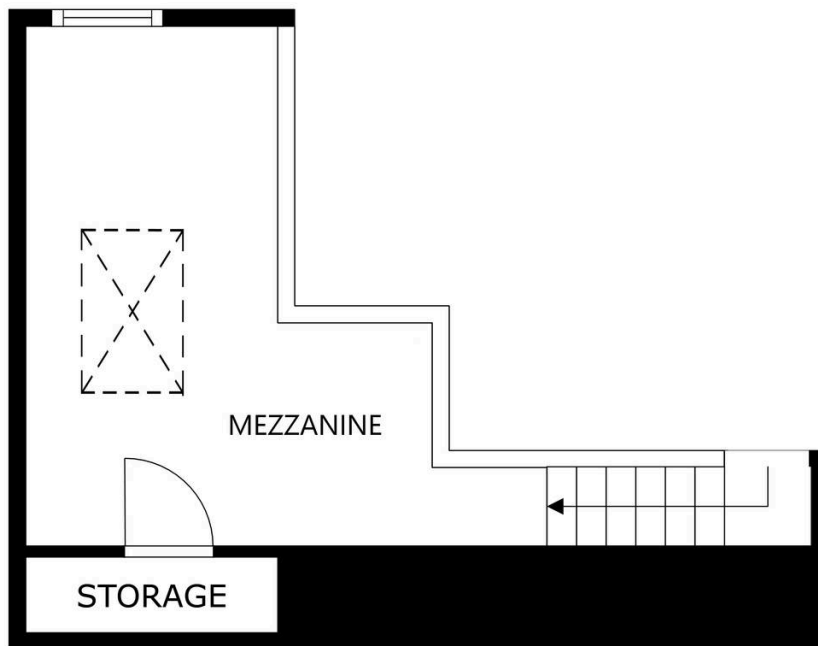
Current Service Charge: £266 per month

Length of Lease: 113 years remaining



FLOOR 1

SIZES AND DIMENSIONS ARE APPROXIMATE, ACTUAL MAY VARY.



FLOOR 2

SIZES AND DIMENSIONS ARE APPROXIMATE, ACTUAL MAY VARY.



We'll keep you moving...



We must inform all prospective purchasers that the measurements are taken by an electronic take and are provided as a guide only and they should not be used as accurate measurements. We have not tested any mains services, gas or electric appliances, or fixtures and fittings mentioned in these details, therefore, prospective purchasers should satisfy themselves before committing to purchase. Intending purchasers must satisfy themselves by inspection or otherwise to the correctness of the statements contained in these particulars. Knightsbridge Estate Agents (nor any person in their employment) has any authority to make any representation or warranty in relation to the property. The floor plans are not to scale, and are intended for use as a guide to the layout of the property only. They should not be used for any other purpose. We are required by law to conduct anti-money laundering checks on all those selling or buying a property. Whilst we retain responsibility for ensuring checks and any ongoing monitoring are carried out correctly, the initial checks are carried out on our behalf by Lifetime Legal who will contact you once you have agreed to instruct us in your sale or had an offer accepted on a property you wish to buy. The cost of these checks is £60 (incl. VAT), which covers the cost of obtaining relevant data and any manual checks and monitoring which might be required. This fee will need to be paid by you in advance of us publishing your property (in the case of a vendor) or issuing a memorandum of sale (in the case of a buyer), directly to Lifetime Legal, and is non-refundable. We will receive some of the fee taken by Lifetime Legal to compensate for its role in the provision of these checks.