



St. Lukes Avenue, Maidstone, , ME14 5AP

Price £110,000



**** A WELL-PRESENTED RARELY AVAILABLE RETIREMENT APARTMENT WITH NO FORWARD CHAIN IMPLICATIONS ****

Page & Wells are delighted to bring to the market this spacious one bedroom first floor retirement apartment located on the sought-after Barden Court development, within close proximity to the town centre. The development is run with an on-site manager (Mon-Fri) who can be contacted from various points within the development in case of an emergency. Outside the manager's hours, there is a 24-hour call system available. There are parking facilities for residents on the site and well-maintained communal gardens. Contact PAGE & WELLS King Street Office on 01622 756703. Tenure: Leasehold. EPC Rating: C. Council Tax Band: C.



ACCOMMODATION

Entrance Hall

Lounge/Diner

Kitchen

Bedroom

Shower Room

EXTERNALLY

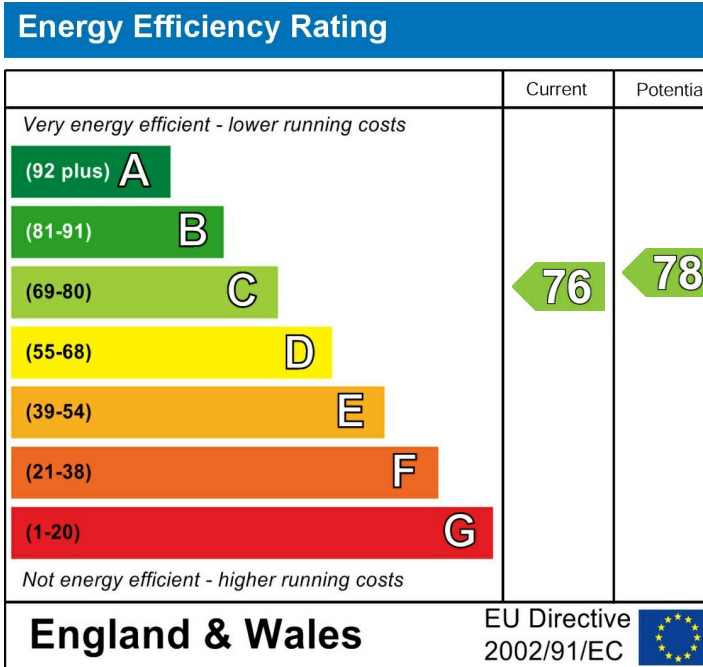
There are pleasant communal garden areas and a parking bay for residents.

LEASE DETAILS

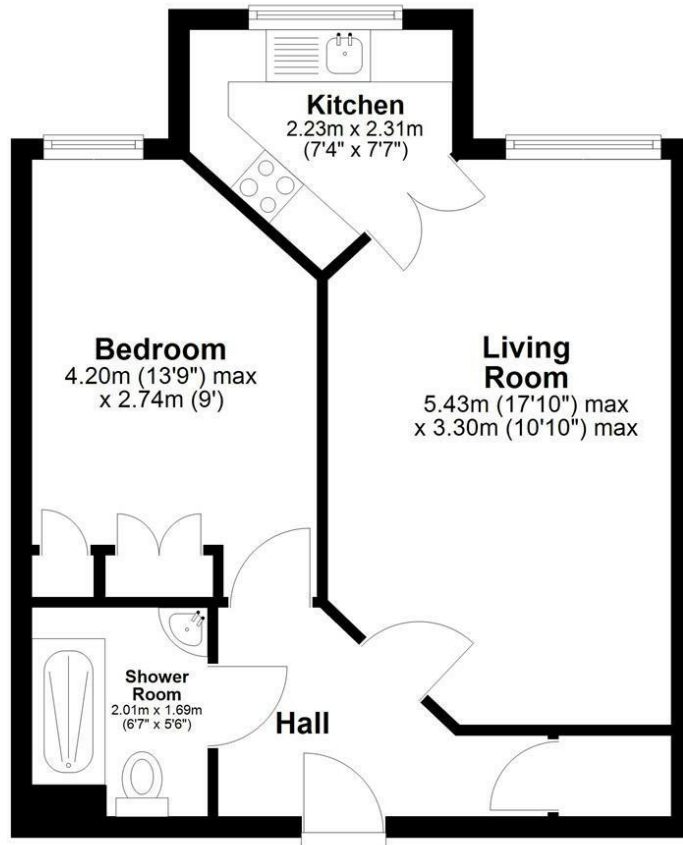
We understand there is a 125-year lease with 94 years remaining. Annual service charge is approx £3,496.00. Annual ground rent is approx £514.14.

VIEWING

Viewing strictly by arrangements with the Agent's Head Office: 52-54 King Street, Maidstone, Kent ME14 1DB. Tel: 01622 756703.



First Floor



Total area: approx. 41.9 sq. metres (450.5 sq. feet)

