



23 Willow Bank

Brayton, YO8 9SR

Offers Over £385,000

**** IMPECCABLY PRESENTED WITH OPEN FARMLAND VIEWS AT THE REAR **** Constructed by Award Winning Orion Homes (c5 years old) this gorgeous detached house offers a perfect blend of modern living and serene countryside charm.

The property boasts a spacious layout with two inviting reception rooms, ideal for both relaxation and entertaining guests. With four well-proportioned bedrooms, there is ample space for families or those seeking extra room for guests or a home office.

The house features two stylish bathrooms, ensuring convenience for all residents. A sunny and bright extension at the rear enhances the living space, allowing for a seamless flow between indoor and outdoor areas. The well-stocked and lovingly maintained gardens provide a delightful setting for outdoor activities, gardening, or simply enjoying the tranquil surroundings.

One of the standout features of this property is the stunning view of the rear farmland, offering a picturesque backdrop that changes with the seasons. For dog owners and nature enthusiasts, the nearby walking paths present great opportunities for leisurely strolls and exploration, either down to the canal or up to Brayton Barff; an historic woodland with paths and trails.

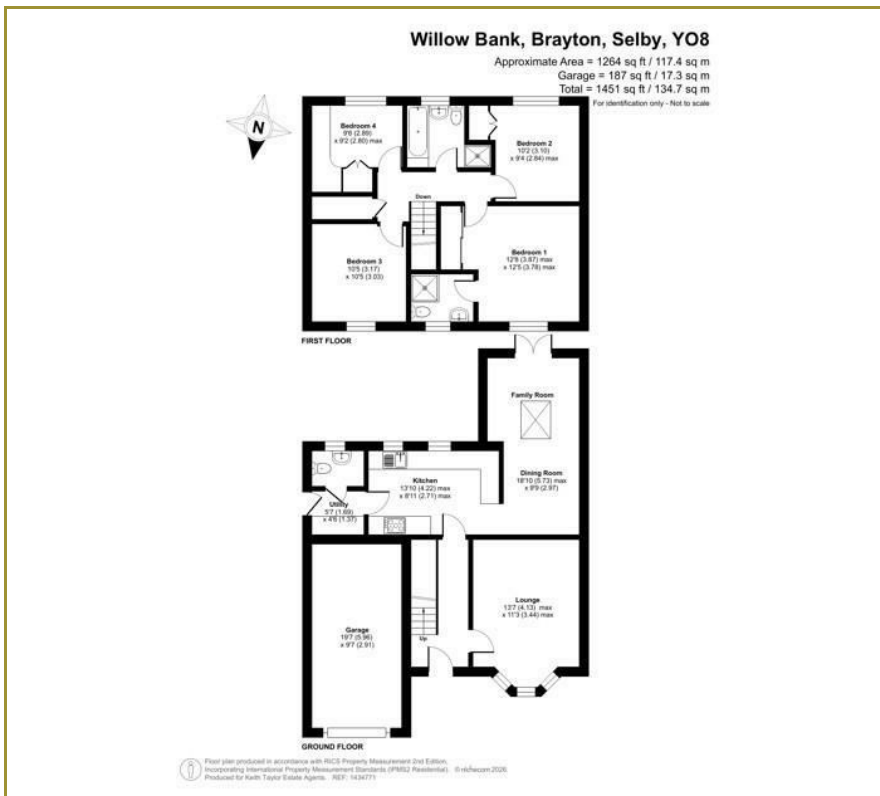
Parking is a breeze with space for up to three vehicles, making it easy for families or visitors to come and go.

This home is not just a property; it is a lifestyle choice, combining comfort, elegance, and the beauty of nature. If you are seeking a family home in a peaceful yet accessible location, this delightful house in Brayton is not to be missed.

- Detached and Extended at the Rear
- Glorious Gardens with Open Farmland Views - SOUTH FACING GARDEN
- 4 Bedroom and 2 Bathrooms
- Master with Dressing Suite
- Driveway Parking
- Immaculately Presented
- Kitchen with Full Integrated Appliances
- Over looking Green Open Space to the Front
- Close to Brayton Barff a Popular Ancient woodland
- Great Village and Community Feel



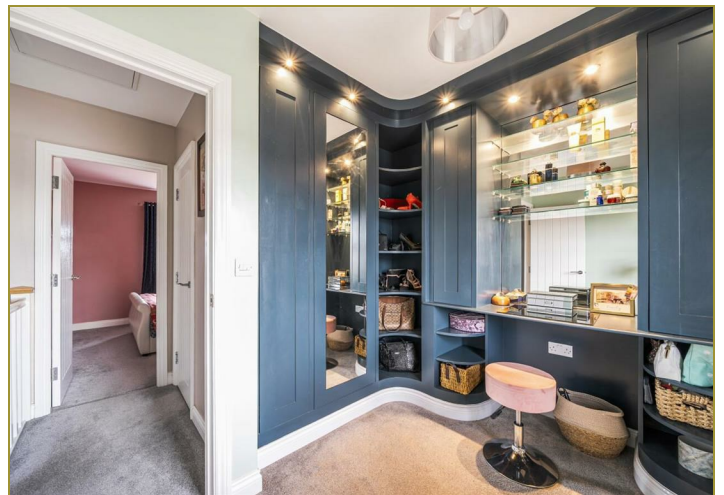
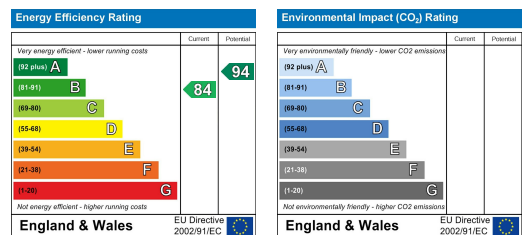
Floor Plan



Area Map



Energy Efficiency Graph



These particulars, whilst believed to be accurate are set out as a general outline only for guidance and do not constitute any part of an offer or contract. Intending purchasers should not rely on them as statements of representation of fact, but must satisfy themselves by inspection or otherwise as to their accuracy. No person in this firm's employment has the authority to make or give any representation or warranty in respect of the property.

Keith Taylor

56 Gowthorpe, Selby, North Yorkshire, YO8 4ET
 Tel: 01757 709457 Email: sales@keithtaylorproperty.co.uk
 www.keithtaylorproperties.co.uk