



YEW HOUSE

NEW STREET, MARNHULL, DORSET, DT10 1NP

Boatwrights
Estate Agents





YEW HOUSE

New Street, Marnhull, Dorset,
DT10 1NP

Summary Of Accommodation

- Superb Grade II Listed North Dorset Home
- Highly Regarded Village Location
- Upgraded & Tastefully Presented Throughout With Over 4,000 Sq. Ft. Of Accommodation
- High Specification Kitchen
- Three Reception Rooms Including Cosy Snug Room
- Exceptional Main Bedroom With En Suite & Dressing Area
- Three Further Bedrooms & Three Bathrooms
- Luxury Bathroom Fittings
- Attractive Front & Rear Gardens
- Off Road Driveway Parking & Triple Garage
- EPC: Exempt

The Property

Welcome to the stunning, Yew House.

Believed to have been originally constructed during the 17th Century, this wonderful home has seen countless updates and upgrades by the current owners.

Bursting with quality, charming and characterful features throughout, this really is a beautiful North Dorset home.

With over 4,000 sq. ft of accommodation arranged over three floors, the internal space presents superbly with key rooms being the gorgeous kitchen/breakfast room, the cosy snug, glorious bathroom and the calming, spacious main suite.

This wonderful home is not to be missed.





Location

Marnhull is a highly sought after “typically English” north Dorset village located in the heart of the Blackmore Vale. It offers some of the finest views of undulating countryside and an abundance of walks as well as excellent amenities, travel links and schools.

The village itself includes a post office, local store, chemist, newsagent, hairdresser, garage, two well-thought of pubs, doctor’s surgery, churches, schools and a very active recreation ground and building offering interesting clubs and local activities.

The old market town of Sturminster Newton is located just 3 miles away with its mix of useful and pleasant stores and to the north the town of Gillingham offers Waitrose and other superstores as well as a mainline railway Exeter/ London , taking two hours direct to Waterloo.

Outside

Externally, Yew House continues to impress in all aspects.

With multiple sun terraces, low maintenance front and rear gardens that are mainly laid to lawn, characterful features including a well complete with pump, the overall look and feel of the outside space that Yew House provides is just as wonderful as the inside.

Ample driveway parking for several vehicles is present as well as a triple garage is with power, lighting and a EV Charger for your electric car.

Tenure

Freehold

Services

All mains services are connected.

Local Authority

Dorset Council, Band G.

Viewing

Strictly by appointment only with Boatwrights in Shaftesbury

01747 213106.

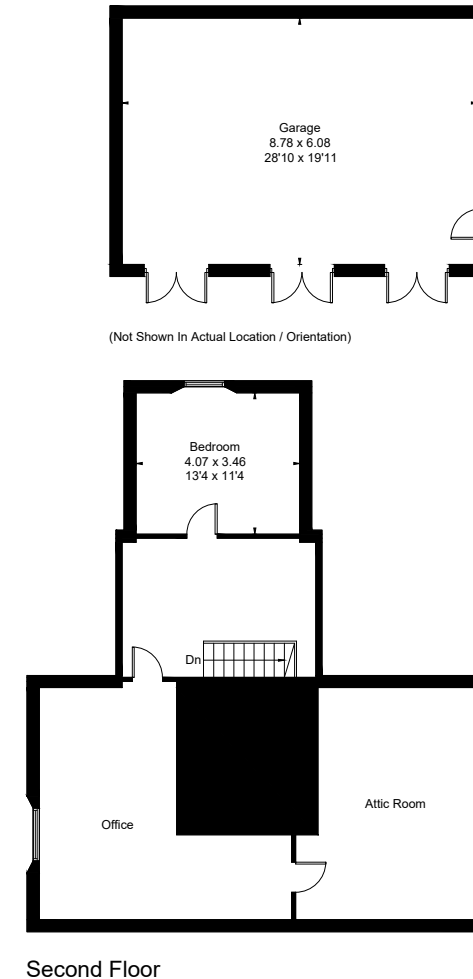
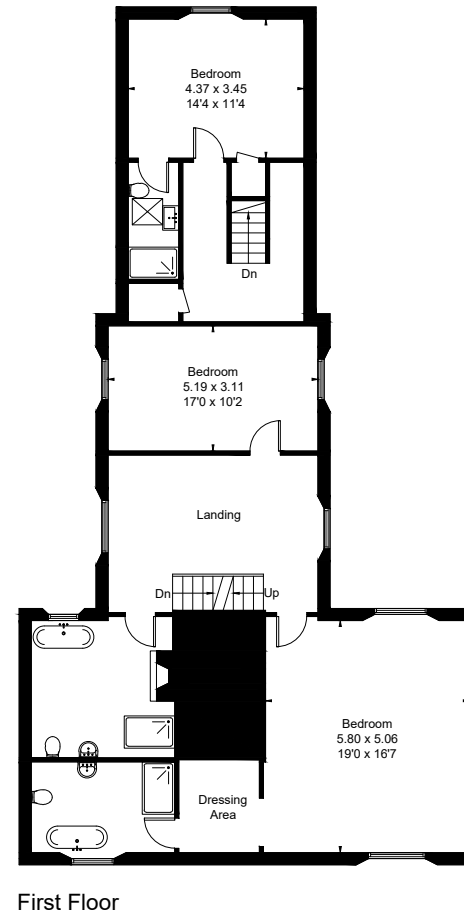
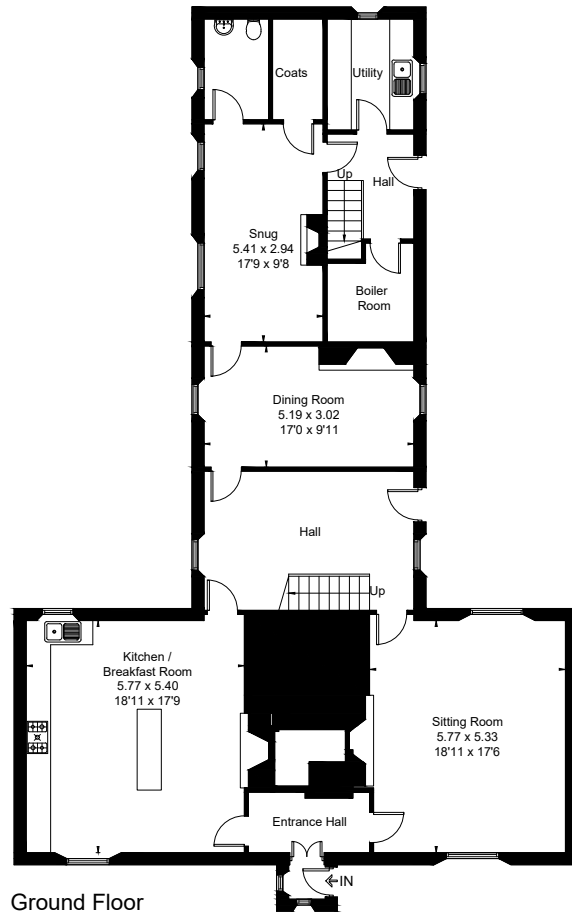
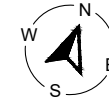
sales@boatwrights.co.uk

www.boatwrights.co.uk





Approximate Floor Area = 382.9 sq m / 4121 sq ft



Boatwrights Estate Agents Ltd
Registered in England No. 9514957 High Street Tisbury Wiltshire SP3 6LD
Tel 01747 859359
Email tisbury@boatwrights.co.uk

Important Notice

These particulars do not constitute or form part of an offer or contract, nor may they be regarded as representations. All interested parties must themselves verify their accuracy. All measurements and the proportions of the floor plans provided are approximate. May 2026