



## Ecclesbourne Road, N1

£700,000

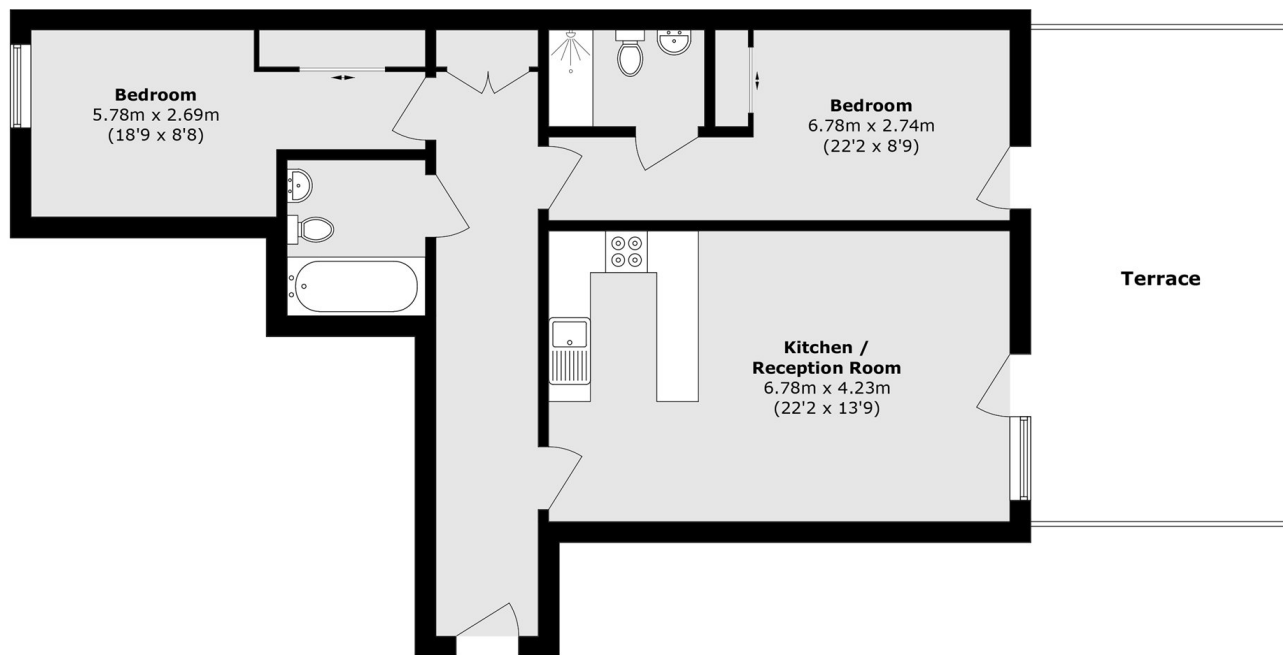
This property offers a spacious open-plan reception area with living, dining, and kitchen space, complemented by floor-to-ceiling windows that lead out to a large private terrace. There are two well-proportioned double bedrooms, including a principal bedroom with en-suite, along with a separate family bathroom. Modern finishes and clean lines create a sleek, welcoming atmosphere throughout.

Angel (Northern line), Essex Road (National Rail) and Highbury & Islington (Victoria line & overground) stations are all under a mile away, whilst the numerous bus routes down Essex Road can take you directly into the City of London. Additionally, the shops, bars and restaurants of Islington's Upper Street are within easy reach.

### Features

- Two Bedrooms
- Two Bathrooms
- First Floor
- Lift Access
- Private Terrace

# Ecclesbourne Road, London, N1



Total area (approx.): 79.4 sq. m (854.7 sq. ft)  
Terrace area (approx.): 26.2 sq. m (282.0 sq. ft)