



Guide Price
£600,000

Freehold

5x  2x  2x 

**Priestwood Road,
Meopham, Gravesend,
Kent, DA13**

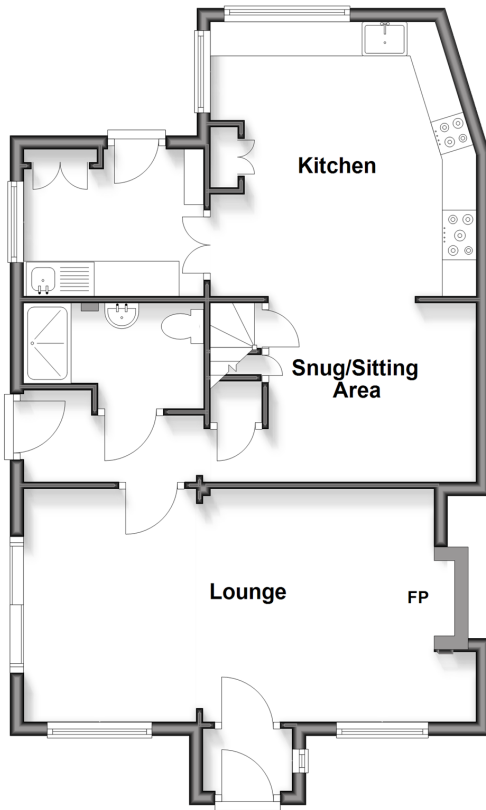
OVER 60?

Secure this property
for up to **59% less!**

Wards
Helping you move forwards

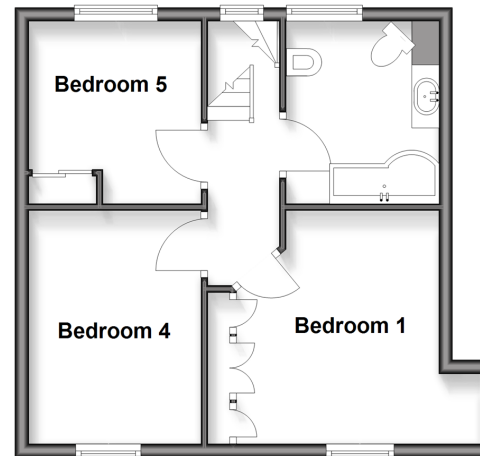
Split Level Ground Floor

Approx. 62.3 sq. metres (671.0 sq. feet)



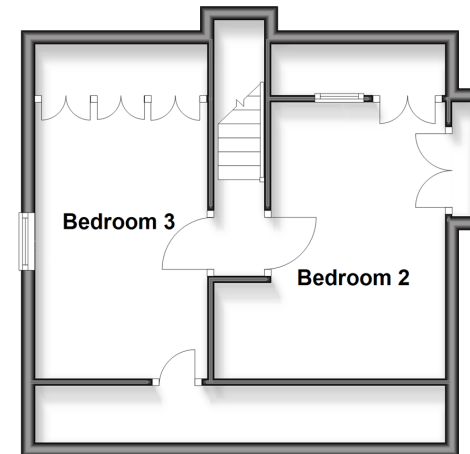
First Floor

Approx. 38.7 sq. metres (416.6 sq. feet)



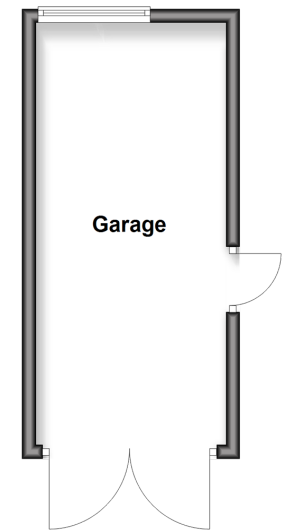
Second Floor

Approx. 36.3 sq. metres (390.8 sq. feet)



Outbuilding

Approx. 17.2 sq. metres (185.0 sq. feet)



Accommodation

SPLIT LEVEL GROUND FLOOR

Porch: 5'0 x 3'6 (1.53m x 1.07m)
 Lounge: 20'6 x 11'3 (6.25m x 3.43m)
 Inner Hallway
 Wet Room: 8'3 x 5'1 (2.52m x 1.55m)
 Snug/Sitting Area: 9'11 x 8'11 (3.02m x 2.72m)
 Kitchen: 13'2 x 11'7 (4.02m x 3.53m)
 Utility Room: 8'7 x 7'2 (2.62m x 2.19m)

FIRST FLOOR

Landing
 Bedroom 1: 13'4 x 11'2 (4.07m x 3.41m)
 Bedroom 4: 10'8 x 8'7 (3.25m x 2.62m)
 Bedroom 5: 9'9 x 8'8 (2.97m x 2.64m)
 Bathroom: 9'0 x 7'1 (2.75m x 2.16m)

SECOND FLOOR

Landing
 Bedroom 2: 13'4 x 8'9 (4.07m x 2.67m)
 Bedroom 3: 11'4 x 11'2 (3.46m x 3.41m)

OUTBUILDING

Garage: 20'1 x 9'0 (6.13m x 2.75m)

OUTSIDE

Driveway
 Front Garden
 Large Side Garden
 Rear Garden



Main features

- Driveway and garage to the side
- Rural location of Harvel and beautiful garden
- Short drive to local amenities and schools
- Spacious and extended family home with all double bedrooms
- Added benefit of utility room, snug and downstairs shower room



Nearest Schools

Schools: Culverstone Green Primary 1.3 miles, Meopham Community Primary 1.5 miles, Vigo Village School 1.6 miles, Meopham School 1.0 miles, Helen Allison School 1.5 miles, Cobham Hall 3.1 miles



Transport Information

Train Stations: Sole Street 2.0 miles, Meopham 2.2 miles, Halling 3.2 miles, Borough Green 6.4 miles



Address

Priestwood Road, Meopham, Gravesend, Kent, DA13



Directions

For directions to this property please contact us.



Wards
Helping you move forwards

Call Meopham Branch 01474 813100 ■ wardsofkent.co.uk



■ Legal advice should be taken to verify fixtures/fittings, planning, alterations and/or lease details ■ Appliances & services are untested, dimensions are approximate and floor plans are not to scale
■ Through a Homewise Home For Life Plan people aged 60+ can secure this property for up to 50% less, by purchasing a Lifetime Lease



13326230/20251230/SB/KD