



Palace Court, W2

£5,500 Per calendar month

A beautifully presented two double bedroom garden flat set within an elegant red-brick period building on the highly sought-after Palace Court. Finished to a high specification throughout, the property boasts a bright reception room with high ceilings, a spacious separate kitchen, two contemporary bathrooms and excellent storage. A separate study/home office provides additional flexibility, while the private patio and garden offer exceptional outdoor space, creating the perfect balance of indoor and outdoor living in the heart of Notting Hill.

Ideally situated moments from the shops, bars and restaurants of both Westbourne Grove and Notting Hill Gate, with Bayswater Underground station just 0.3 miles away. Hyde Park and Kensington Gardens are also within easy reach.

Features

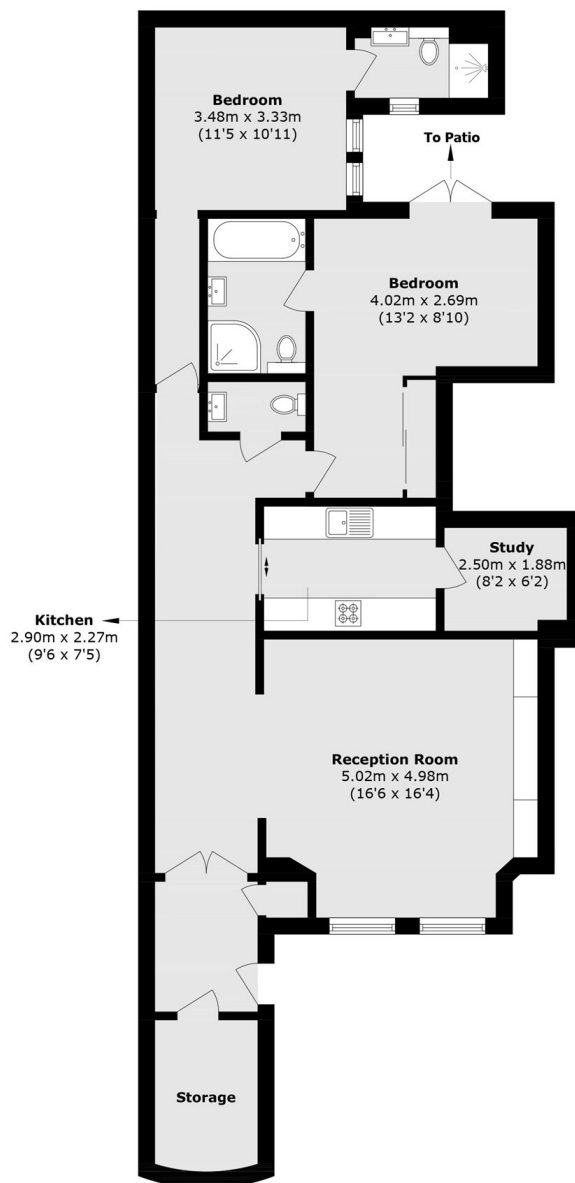
- Two Double Bedrooms
- Two Bathrooms
- High Ceilings
- Separate Kitchen
- Private Patio
- Office



Palace Court, W2



Palace Court, London, W2



Lower Ground Floor

Total area (approx): 107.3 sq. m (1154.9 sq. ft)