



Baldwins Gardens, EC1N

£1,998 Per calendar month

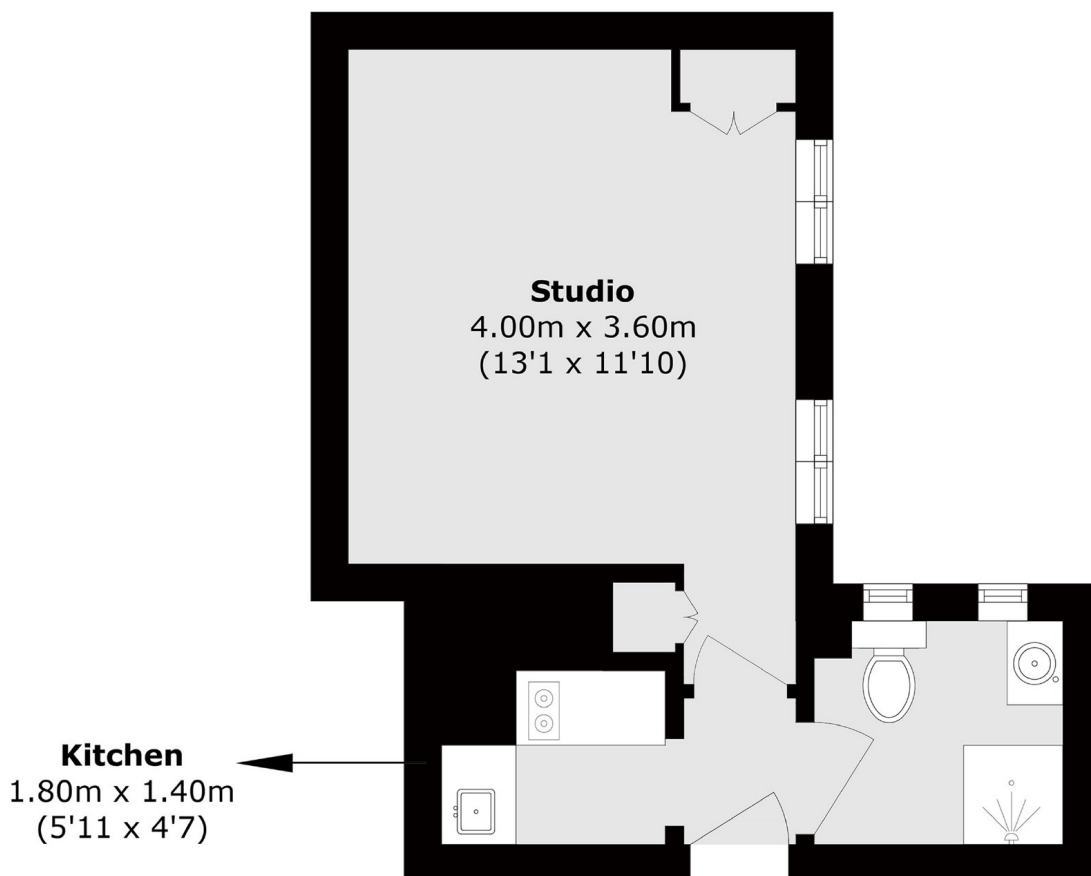
Studio flat in a mansion block on a quiet side street between Gray's Inn Road and Hatton Garden. A great base for anyone needing easy access to the Farringdon Elizabeth Line and the West End.

Courtfield House is close to Hatton Garden and Clerkenwell's shops and local amenities with good transport links at Farringdon and Chancery Lane stations.

Features

Studio Apartment
Wood Floors Throughout
Modern
Furnished

Baldwins Gardens, London, EC1N



Total area (approx.): 25.2 sq. m (271.3 sq. ft)