



Garden Road, NW8

£1,200,000

Occupying approximately 1,200 sq ft, this spacious three double bedroom, two bathroom apartment is set within an attractive red brick building with lift access. The property is offered chain free and benefits from a share of freehold.

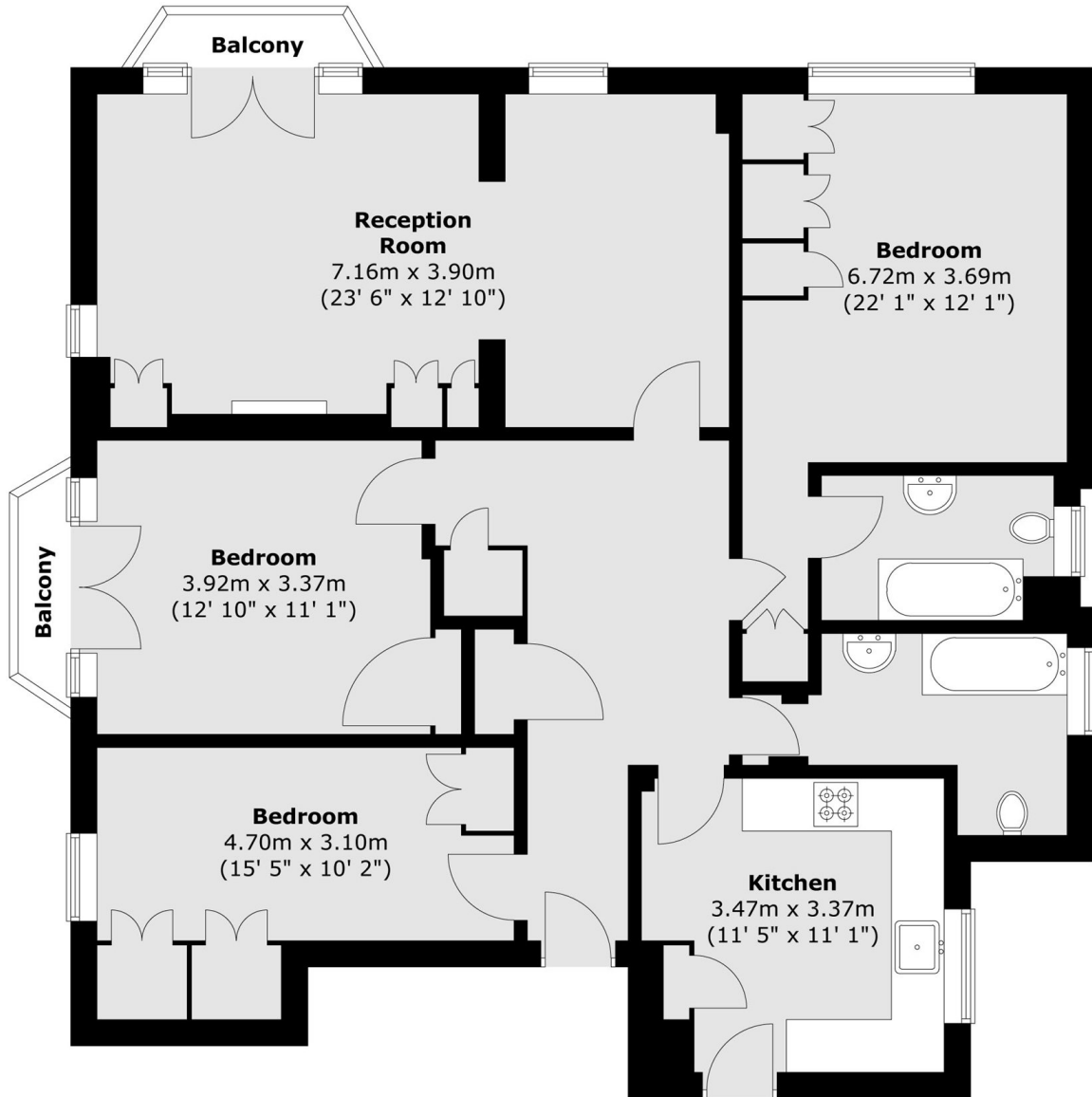
Garden Court is ideally positioned in the heart of St John's Wood, moments from the cafés, boutiques, and restaurants of the High Street. Regent's Park and Lord's Cricket Ground are both within easy reach. Transport links include St John's Wood underground station (Jubilee line) and Maida Vale underground station (Bakerloo line).

Features

- Three Bedrooms
- Share of Freehold
- Two Bathrooms
- Lift
- Chain Free
- Central Location

Garden Road, London, NW8

Fourth Floor



Total area (approx.) : 112.3 sq. m (1209 sq. ft)
Total balcony area (approx.) : 2.8 sq. m (30 sq. ft)