



**10 Whittaker Close, Crewe, CW1 3QY**  
**Guide price £200,000**

## GROUND FLOOR

### Lounge 13'3" x 13'1" (4.04m x 4.00m)

High quality wood effect laminate flooring with open aspect leading through to the conservatory

### Kitchen/diner 8'0" x 16'0" (2.45m x 4.88m)

Tile flooring with patio doors leading to the rear garden and blind. A range of fitted kitchen units, worktops and integrated kitchen appliances, including oven, hob, hood and dishwasher

### Conservatory 9'10" x 9'9" (3.00m x 2.99m)

High quality wood effect laminate flooring with patio doors leading to the rear garden

Private, well presented rear garden enclosed by panel fencing with laid to lawn and patio area. Parking for 2 vehicles in communal parking area to the rear of the property.

## FIRST FLOOR

### Bedroom 13'0" x 10'9" (3.98m x 3.28m)

Carpet flooring with window to the rear elevation, fitted wardrobes and blind

### En-suite

High quality vinyl flooring with 2 piece bathroom suite in white, separate showering enclosure and radiator

### Bedroom 10'2" x 11'2" (3.12m x 3.41m)

Carpet flooring with window to the side elevation

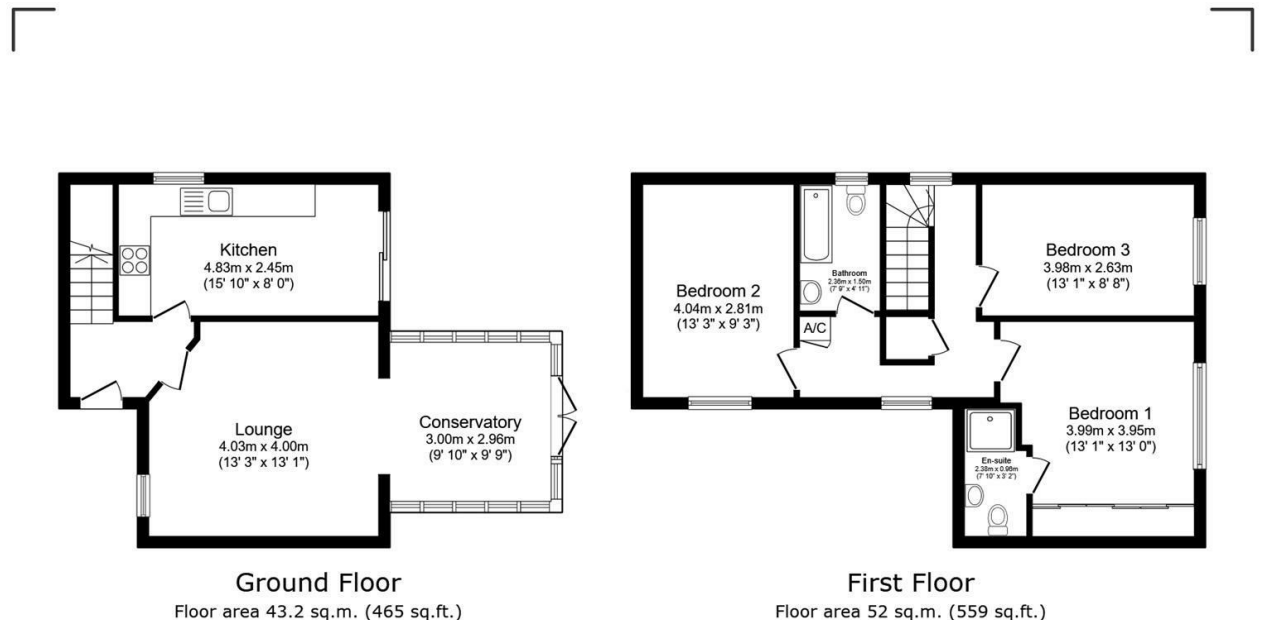
### Bedroom 9'2" x 13'2" (2.81m x 4.03m)

Carpet flooring with window to the side elevation and blind

### Bathroom

High quality vinyl flooring with 3 piece bathroom suite in white, partially tiled decor, radiator and blind

## EXTERNAL



Total floor area: 96.2 sq.m. (1,035 sq.ft.)

This floor plan is for illustrative purposes only. It is not drawn to scale. Any measurements, floor areas (including any total floor area), openings and orientations are approximate. No details are guaranteed, they cannot be relied upon for any purpose and do not form any part of any agreement. No liability is taken for any error, omission or misstatement. A party must rely upon its own inspection(s). Powered by [www.Propertybox.io](http://www.Propertybox.io)