

Warwick Road, SW5

£850,000

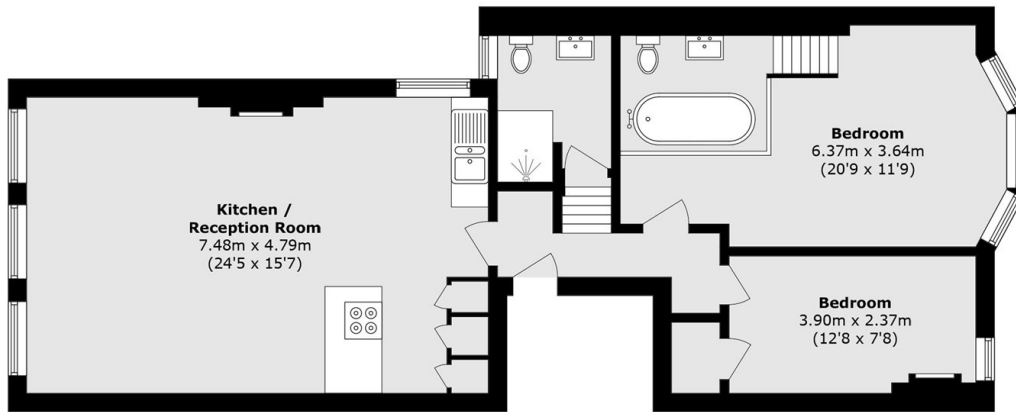
A beautifully presented first-floor, two-bedroom flat ideally located in Earls Court. This bright and spacious home features a generous open-plan kitchen and living area with views over Philbeach Gardens, two well-proportioned double bedrooms, a modern family bathroom, and a stylish en-suite to the principal bedroom. Finished to a high standard throughout, the property offers both comfort and convenience in a sought-after London location.

Warwick Road has access to the rear entrance of Earls Court tube station, the high street is only a few minutes away and High Street Kensington is within walking distance.

Features

- First Floor Apartment
- Two Double Bedrooms
- Modern Finish
- Large Open Plan Reception
- Excellent Transport Links
- Access To Gardens

Warwick Road, London, SW5



Total area (approx.): 78.4 sq. m (843.9 sq. ft)