



**POOLE
TOWNSEND**

Westmorland Street, Barrow-in-Furness, Cumbria, LA14 5AR

£115,000

🛏 2 🚿 1 🚪 1



This is a smartly presented home that has been modernised and updated over recent years. The accommodation comprises; comfortable lounge, modern kitchen with access to a wall yard, two bedrooms and a contemporary styled shower room. The property also features a GCH system, DG and access to roadside parking. The property is located in a popular residential area which is convenient for nearby bus services, Co-op, takeaway food, hair salons and pharmacy etc. An ideal home to consider for any first time buyer, couple or landlord as a buy to-let investment.

Location

What3Words///memory.grab.tower

Description

Situated in an ever popular location, this attractively presented home offers accommodation that will appeal to many buyers.

The entrance door leads you into the lounge via a vestibule area. This reception area is naturally light and features a two-tone coloured decor and an invaluable storage cupboard beneath the central staircase that separates the room from the adjacent kitchen.

The fitted base cabinets and drawers are laid out in an L-shape arrangement with further cupboards mounted to one of the walls above. There is an integrated oven/grill with a halogen style hob and cooker hood, an inset sink, space for a fridge/freezer and a washing machine. The back door leads you into a walled yard.

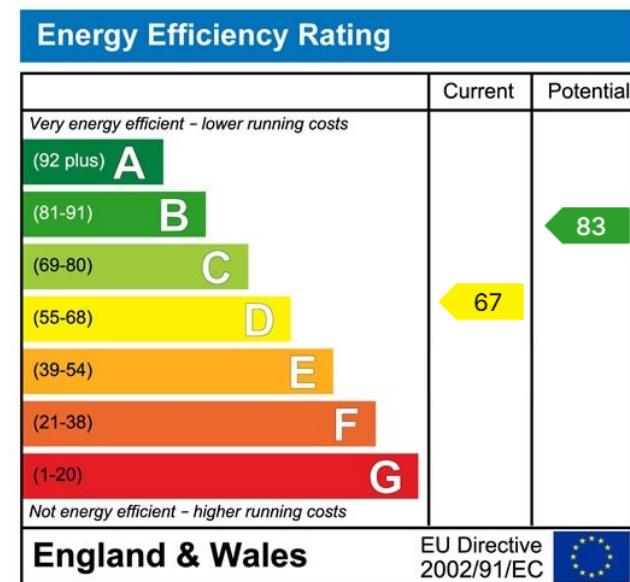
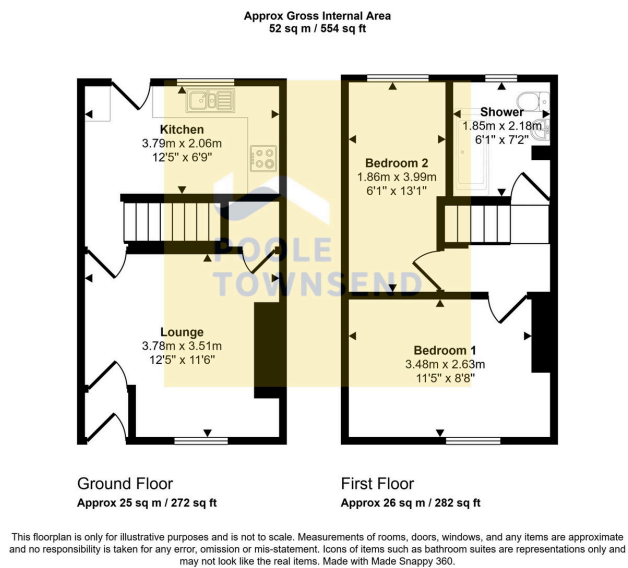
The landing provides separate access to the shower room and to both of the bedrooms. Each bedroom has ample space for a double bed. The much larger of the two rooms at the front of the house has plenty of additional space for wardrobes and drawers etc.

The shower room is only a recent upgrade by the current homeowner, providing a 3-piece suite including a WC with concealed cistern, a hand basin with storage cupboard beneath and a wall mounted vanity mirror above with integrated lighting. The shower area has a low-profile shower tray with a glazed screen and a dual-





- Mid Terraced Property
- Popular Residential Area
- Comfortable Lounge
- Modern Fitted Bathroom
- Council Tax Band A
- Smart And Modern Home
- Two Bedrooms
- Fitted Kitchen
- Ideal For First Time Buyers



Visit us at
www.pooletownsend.co.uk
enquiries@pooletownsend.co.uk

We are open
 Monday – Friday 9.00 – 5.00
 Saturday 9.00 – 1.00

Barrow 01229 811811
 Ulverston 01229 588111
 Grange 015395 33316
 Kendal 01539 734455
 Milnthorpe 015395 62044