



Bolton Head Farm Estate | Gosforth | Seascale | CA20 1EW

Guide Price £1,450,000



david britton
ESTATES



Key Features

- An Incredible opportunity to acquire a wonderful Lakeland Estate.
- Comprising of an Immaculate 5 bedroom luxury barn conversion PLUS a Four-bedroom traditional stone farmhouse of exceptional character.
- Perfect for multigenerational living or a lifestyle income business opportunity.
- Four acres of grounds including gardens, a pond and three paddocks
- Breathtaking views over the Wasdale Valley and towards the coast.
- Traditional stone outbuilding used as home office & store.
- Large agricultural barn, workshop and yard.
- Planning permission granted for swimming pool.
- Minutes from Gosforth village; five miles from Seascale rail station
- Planning permission granted for swimming pool.
- Further development potential (STP)

Summary

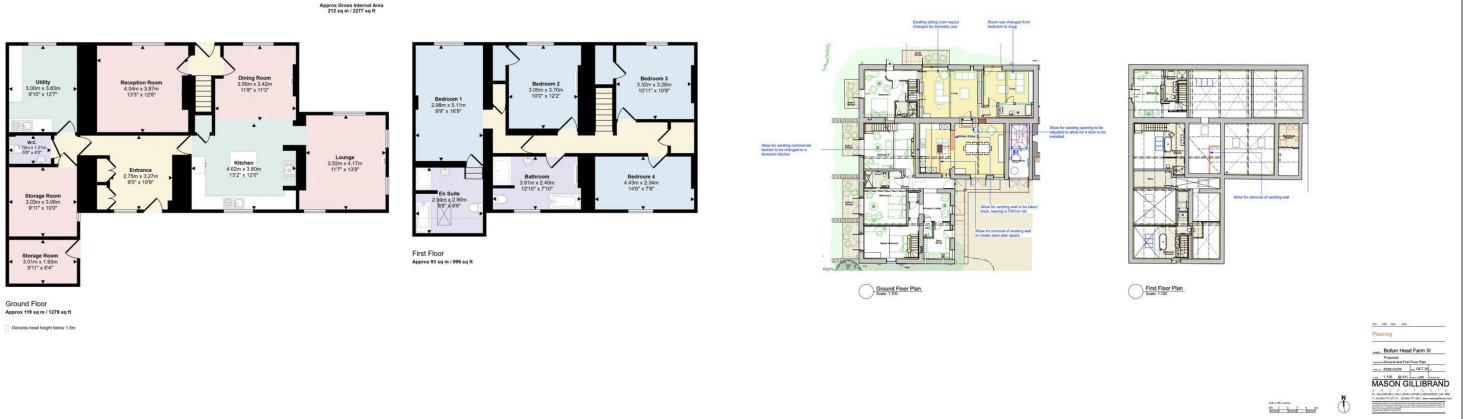
Flexible accommodation suitable for multi-generational living or to use one or both as holiday accommodation.

Set within four acres on the western edge of the Lake District. Live the family dream, earn an income, or do both — this is a truly rare find!





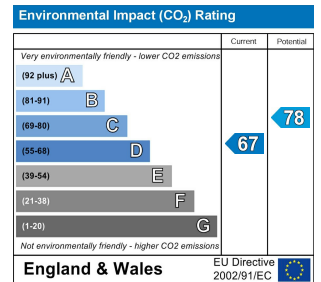
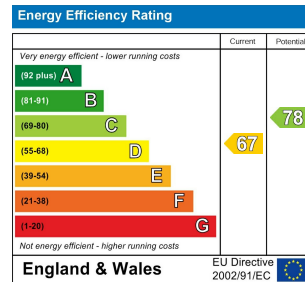
Floor plans



COUNCIL TAX BAND - CopelandD

DISCLAIMER

These particulars, whilst believed to be accurate are set out as a general guideline and do not constitute any part of an offer or contract. Intending Purchasers should not rely on them as statements of representation of fact but must satisfy themselves by inspection or otherwise as to their accuracy. The services, systems, and appliances shown may not have been tested and has no guarantee as to their operability or efficiency can be given. All floor plans are created as a guide to the lay out of the property and should not be considered as a true depiction of any property and constitutes no part of a legal contract.



Unit 3 Mason Court Gillan Way, Penrith 40 Business Park

Penrith

Cumbria

CA11 9GR

01768881111

Sales@brittonestates.co.uk

www.brittonestates.co.uk