

14 Constantine Road, Caernarfon

£287,000 Freehold

Spacious 5-bedroom townhouse set over three floors • Far reaching views over the top of Caernarfon Castle, across the Menai Strait and over to Anglesey • Prime central location just steps from Caernarfon town centre • Large open-plan living and dining space with high ceilings • Beautiful original tiled hallway and period features • South-west facing garden, a real sun trap • Generous bedrooms, including an exceptionally large primary room • Bright galley kitchen with range cooker and integrated dishwasher • Practical utility room with direct garden access • Ideal for family living or professionals needing flexible home office space

catra



“Cartref trefol mawreddog, lle mae gofod, cymeriad a lleoliad yn dod ynghyd yn berffaith.”

EIDDO HEB GADWYN

Cartref trefol eang gyda phum ystafell wely, wedi'i leoli yn agos i ganol Caernarfon. Mae Bron-Y-Dre yn cynnig y cydbwysedd perffaith rhwng bywyd trefol bywiog a gofod hael i fyw a thyfu. Mae'r cartref hwn wedi bod yn gartref i dair genhedlaeth ac wedi bod yn dyst i lawer o atgofion hapus.

Wrth gamu i mewn, mae'r teils gwreiddiol a grisiau crand yn y cyntedd yn gosod y naws ar unwaith - cartref llawn cymeriad gyda nenfydau uchel a phensaerniaeth sy'n adlewyrchu ei oes. Mae'r gofod byw agored yn llifo'n naturiol i'r ardal fwyta, gyda mynediad hyfryd allan i'r ardd ddeheuol - lle perffaith ar gyfer ymlacio neu ddiwyru gyda ffrindiau.

Mae'r gegin yn ymarferol ac yn cysylltu'n hawdd â'r ystafell 'utility', gan greu trefniant addas ar gyfer bywyd teuluol prysur. Y tu allan, mae'r ardd o faint perffaith - yn gaeedig ac yn ddiogel i blant a chŵn, gyda digon o le ar gyfer barbeciws a phrynhawniau haf.

Wedi'i ledaenu dros dri llawr, mae'r cartref yn cynnig hyblygrwydd gwirioneddol a lloriau pren yn cuddiad odan garped. Ar y llawr cyntaf ceir dwy ystafell wely fawr ac ystafell ymolchi deuluol fodern a golau, tra ar y llawr uchaf mae tair ystafell wely ychwanegol - yn berffaith ar gyfer teulu sy'n tyfu neu ar gyfer creu swyddfeydd cartref, stiwdio ioga neu ystafeloedd sbâr i ffrindiau neu teulu.

O gefn y tŷ, ceir golygfeydd hyfryd tuag at Yr Eifl a 'Castell Bach', gan ychwanegu ymdeimlad o le a chysylltiad â'r dref o'ch cwmpas.

Wedi bod yn gartref teuluol cariadus i dri cenhedlaeth, mae Bron-Y-Dre yn cynnig cyfle i greu cartref newydd llawn bywyd - boed ar gyfer teulu neu weithwyr proffesiynol sy'n chwilio am ofod, cymeriad a lleoliad gwych o fewn pellter cerdded i'r dref.



“A grand townhouse where space, character and location come together beautifully.”

PROPERTY WITH NO ONWARD CHAIN

A grand and spacious five-bedroom townhouse, positioned not far from the heart of Caernarfon. Bron-Y-Dre offers the perfect balance between vibrant town living and generous space to live and grow. This home has been home to three generations and has witnessed many happy memories.

Stepping inside, the original tiled hallway and grand staircase immediately sets the tone – a home full of character, with high ceilings and architecture that reflects its era. The open-plan living space flows effortlessly into the dining area, with lovely access out to the south-facing garden – ideal for relaxing or entertaining with friends.

The kitchen is practical and connects neatly to a handy utility space, making everyday family life easy. Outside, the garden is perfectly sized – enclosed and safe for children and dogs, with plenty of room for barbecues and summer afternoons.

Arranged across three floors, the home offers true flexibility, as well as wooden floors hidden under the carpets. The first floor hosts two large bedrooms and a bright, modern family bathroom, while the top floor provides a further three bedrooms – ideal for a growing family or for creating home office space, a yoga studio or spare bedrooms for friends and family.

To the rear, there are beautiful views towards Yr Eifl and ‘Castell Bach’, adding a sense of space and connection to the surrounding landscape.

Having been a much-loved family home for three generations, Bron-Y- Dre now offers an exciting opportunity to create something new – whether as a generous family home or for professionals seeking space, character and a prime town-centre location.

Tŷ trefol 5 llofft eang yng nghanol Caernarfon, dim ond camau o'r dref. Gofod dros 3 llawr, gardd ddeheuol a golygfeydd o'r cefn – perffaith ar gyfer bywyd teuluol neu pobl proffesiynol.

EPC – D

Band Treth Cyngor – D

Ffenestri a drysau Haen Dwbl drwyddo gyda ffenestri 'sash' ar hyd blaen y ty

Gwres Canolog Nwy

Mi fydd LTT yn daladwy ar yr eiddo hwn

EPC – D

Council Tax Band – D

Double Glazed windows and doors throughout the house with sash windows across the front.

Gas central heating

LTT is payable on this property

- Spacious 5-bedroom townhouse set over three floors
- Far reaching views over the top of Caernarfon Castle, across the Menai Strait and over to Anglesey
- Prime central location just steps from Caernarfon town centre
- Large open-plan living and dining space with high ceilings
- Beautiful original tiled hallway and period features
- South-west facing garden, a real sun trap
- Generous bedrooms, including an exceptionally large primary room
- Bright galley kitchen with range cooker and integrated dishwasher
- Practical utility room with direct garden access
- Ideal for family living or professionals needing flexible home office space



Ystafell Fyw a Bwyta / Living and Dining Room

24' 11" x 13' 1" (7.59m x 4.00m)

Wrth gamu i mewn, mae maint y gofod yn drawiadol. Nenfydau uchel, ffenestr fae hardd dros Ffordd Cwstenin a lle tân nwy yn creu canolbwynt. Yn llifo i ardal fwyta eang gyda drysau llithro allan i'r ardd - gofod amlbwrpas gwirioneddol.

Stepping in, the scale is instantly striking. High ceilings, a beautiful bay window over Ffordd Cwstenin and a gas fireplace create a focal point. It flows into a large dining area with double sliding doors to the garden - a truly versatile space.





Cegin / Kitchen 13' 11" x 8' 5" (4.25m x 2.57m)

Cegin hir a golau, mae ffenestr fawr yn edrych allan dros y coed a blodau yn yr ardd, gan lenwi'r gofod â golau naturiol. Ceir sinc 'porcelain' gwyn ynghyd a pheiriant golchi llestri wedi'i integreiddio, yn ogystal a lle i osodi fridje/freezer. Mae popty 'range dual fuel' hardd fel canolbwynt ac mae'r bar brecwast yn creu lle i gadw cwmni i'r cogydd. Gofod cymdeithasol, chroesawgar a cynnes.

A long, light-filled kitchen with a large window looking out over the trees and flowers in the garden, filling the space with natural light. There is a white porcelain sink, an integrated dishwasher, and space for a fridge/freezer. A beautiful dual-fuel range cooker takes centre stage, while the breakfast bar creates a place to keep the cook company. A social, welcoming and warm space.

Utility 6' 1" x 5' 3" (1.86m x 1.59m)

Ystafell amlwrpas, wedi'i leoli oddi ar y gegin ac yn arwain i'r ardd. Mae'n cynnig sinc Belfast, lle i hongian dillad a lle peiriant golchi a sychu dillad. Gofod trefnus a chyfleus i gadw'r cartref yn daclus. Mae toiled bach oddiar y stafell yma hefyd.

A useful utility room set just off the kitchen and leading out to the garden. It offers a practical space with a Belfast sink, space for hanging clothes and room for a washing machine and dryer. There is a small WC next to the utility also.

Ystafell Ymolchi / Bathroom 9' 7" x 8' 3" (2.91m x 2.51m)

Ystafell ymolchi eang sy'n gwynebu'r de, yn llawn golau naturiol drwy ddwy ffenestr. Mae'n ofod modern a ffresh, gyda bath mawr a chawod 'Rainfall' ar wahân. Mae digon o le yn y canol, gan ei gwneud yn ystafell berffaith i deulu ac yn lle hyfryd i ddechrau'r bore.

A large south-facing bathroom filled with natural light from two windows. The space feels fresh and modern, with a generous bath and a separate 'Rainfall' shower. There's plenty of room throughout, making it an ideal family bathroom and a bright, uplifting space to start the day.





Ystafell Wely 1 / Bedroom 1

12' 1" x 12' 2" (3.68m x 3.70m)

Ystafell wely ddwbl fawr gyda ffenestr sy'n wynebu'r de, dros yr ardd gefn sy'n gwneud y gofod yn llachar ac yn gynnes drwy'r dydd. Wedi'i lleoli drws nesaf i'r prif ystafell wely, mae'n ddewis delfrydol fel ystafell i blentyn neu ystafell ychwanegol.

A large double bedroom with a south-facing window, over the back garden making the space bright and warm throughout the day. Positioned next to the primary bedroom, it's an ideal child's room or a comfortable additional bedroom.

Ystafell Wely 2 / Bedroom 2 18' 1" x 12' 10" (5.50m x 3.90m)

Ystafell wely enfawr - un o'r mwyaf rydym ni yn Catra wedi'i weld. Nenfydau uchel a ffenestr fae fawr yn creu gofod arbennig. Gall dderbyn gwely superking, dau wardrob ddwbwl a mwy. Wrth gamu i mewn, mae maint yr ystafell yn tynnu sylw at gryfder y cartref: ei ystafelloedd ymryddawn a hael.

An exceptionally large bedroom - one of the biggest we've seen at Catra. High ceilings and a large bay window create a striking. Easily accommodates a superking bed, two double wardrobes and more. Stepping in, the scale highlights the home's standout feature: its generous and versatile rooms.

Ystafell Wely 3 / Bedroom 3 12' 7" x 11' 11" (3.84m x 3.62m)

Ar yr ail lawr, mae'r gofod yn troi'n gynnes ac yn glyd. Ystafell wely ddwbwl o faint da gyda golygfeydd hyfryd, yn lle tawel i ymlacio. Mae'r nenfwd yn rhoi naws bersonol a chysurus - perffaith fel ystafell i westeion neu fel ystafell wely dawel.

On the second floor, the feel becomes warm and cosy. A good-sized double bedroom with lovely views, offering a peaceful place to unwind. The space has a more intimate feel, making it ideal as a guest room or a calm, comfortable bedroom.



Ystafell Wely 4 / Bedroom 4 12' 11" x 10' 2" (3.94m x 3.09m)

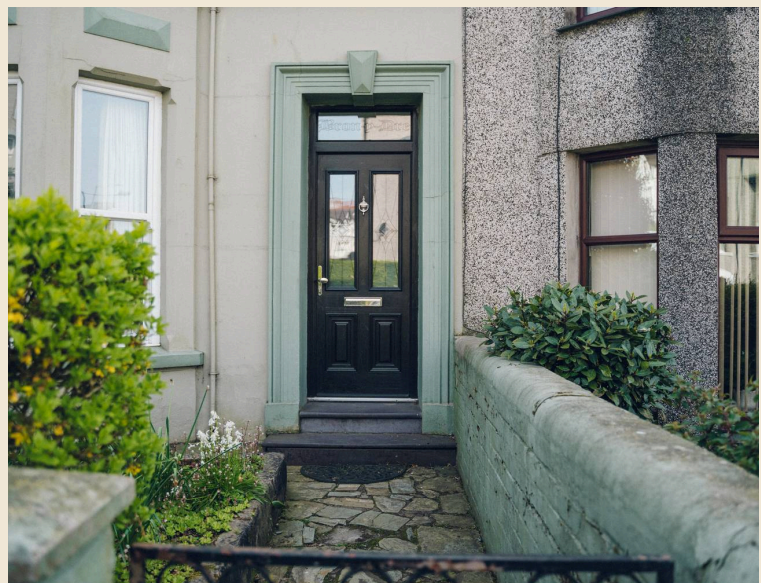
Ystafell wely yn nhu blaen y tŷ gyda naws hudolus. Mae'r mynediad hir yn arwain i ofod clyd a chroesawgar. Digon mawr ar gyfer gwely dwbl, neu'n berffaith fel ystafell i blentyn neu swyddfa gartref.

A bedroom set at the front of the house with a slightly magical feel. A long entrance leads into a cosy, inviting space. Large enough for a double bed, or ideal as a child's room or home office.

Ystafell Wely 5 / Bedroom 5 9' 11" x 7' 9" (3.03m x 2.36m)

Ystafell wely leiaf y cartref, ar hyn o bryd yn swyddfa gartref. Ystafell sengl yn gwynebu blaen y tŷ, gyda ffenestr hyfryd dros Ffordd Cwstenin. Ceir mynediad i'r atig o'r fan hon - gofod ymarferol gyda photensial pellach. Mae'r atig yn enfawr gyda ffenestri velux, phŵar a golau yno.

The smallest bedroom in the home, currently used as a home office. A front-facing single room with a lovely window overlooking Ffordd Cwstenin. It also provides access to the attic - a practical space with further potential. The attic is huge with velux windows, light and power installed.





Yr Ardd / Garden

Mae'r ardd yn gwynebu'r de-orllewin, gan fwynhau haul rhan fwyaf o'r dydd - 'sun trap' yn wirioneddol. Wedi'i nythu ymhlith y tai cyfagos, mae'n teimlo'n breifat a thawel, bron fel gardd gudd. Mae'r perchnogion presennol wedi ychwanegu nifer o botiau planhigion a gwyrddni, gan greu naws fyw a chroesawgar. Ceir mynediad drwy ddrysau dwbl o'r ardal fwyta neu o'r 'utility', gyda giât gefn ymarferol ar gyfer mynd a'r ailgylchu allan, beic neu fynd allan am dro. Mae sied yn cynnig storfa ddefnyddiol.

The garden is south-west facing, enjoying sunshine for most of the day - a real sun trap. Nestled amongst neighbouring homes, it feels private and peaceful, almost like a hidden garden. The current owners have added numerous plant pots and greenery, creating a lush, welcoming feel. Accessed through double doors from the dining area or via the utility, it also benefits from a rear access gate - ideal for bins, bikes or heading out for a walk. A shed provides useful storage.



Lleoliad / Location

Wedi'i leoli ar Ffordd Cwstenin, mae Bron-Y- Dre mewn safle canolog a chyfleus iawn, dim ond munudau ar droed o galon Caernarfon. Mae'r lleoliad hwn yn gwneud bywyd bob dydd yn hawdd - gyda phopeth o fewn cyrraedd cerdded. Mae ysgol gynradd, yr ysgol uwchradd a'r clwb pêl-droed lleol oll o fewn pellter cerdded, gan ei wneud yn ddewis gwych i deuluoedd. Nid yw archfarchnadoedd ymhell chwaith, ac wrth gerdded i mewn i'r dref byddwch yn dod o hyd i feddygfeydd, deintyddion, y llyfrgell a phob gwasanaeth hanfodol. Mae Caernarfon ei hun yn lle bywiog ac unigryw i fyw, gyda chyfuniad o siopau annibynnol, caffis a bwytai, yn ogystal â digwyddiadau cymunedol drwy gydol y flwyddyn fel Gŵyl Fwyd Caernarfon a Gŵyl Arall. Mae'n dref sy'n teimlo'n gymunedol ac yn greadigol, gyda digon o gyfleoedd i gysylltu â phobl a mwynhau bywyd lleol. Er bod parcio ar y stryd, mae'r lleoliad yn annog ffordd o fyw sy'n seiliedig ar gerdded - cwrdd â ffrindiau am goffi, mynd am dro o amgylch y dref, neu fwynhau'r awyrgylch heb fod angen dibynnu ar y car. Yn syml, mae hwn yn lleoliad sy'n cynnig y gorau o fywyd trefol - yn gyfleus, yn gymunedol ac yn llawn bywyd.

Situated on Ffordd Cwstenin, Bron-Y-Dre enjoys a central and highly convenient position, just minutes' walk from the heart of Caernarfon. This is a location that makes everyday life feel easy, with everything within comfortable reach. A primary school, the local high school and the football club are all within walking distance, making it a great choice for families. Supermarkets are close by, and a short walk into town brings you to doctors' surgeries, dentists, the library and all essential services. Caernarfon itself is a vibrant and characterful place to live, with a mix of independent shops, cafés and restaurants, alongside a strong calendar of community events such as the Caernarfon Food Festival and Gŵyl Arall. It's a town that feels connected, creative and full of life. While there is on-street parking, living here naturally lends itself to a more walkable lifestyle - meeting friends for coffee, strolling into town, and enjoying everything the area has to offer without relying on the car. Quite simply, this is a location that offers the best of town living - convenient, community-led and full of energy.





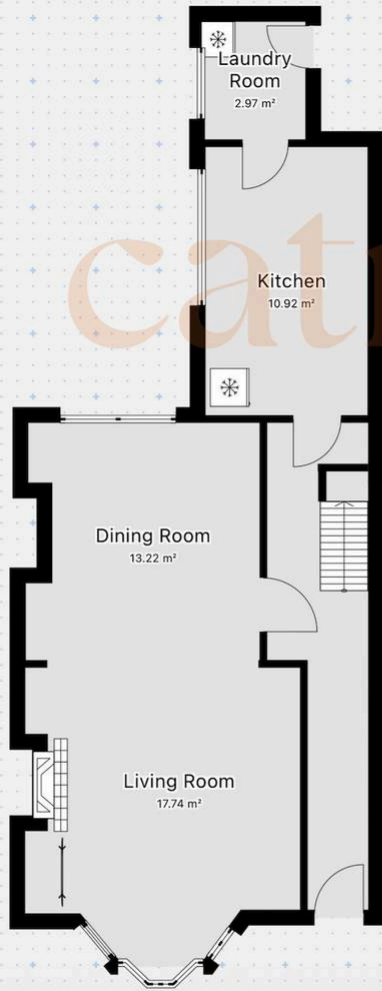


Energy Efficiency Rating

	Current	Potential
<i>Very energy efficient - lower running costs</i>		
(92+) A		
(81-91) B		83
(69-80) C		
(55-68) D	67	
(39-54) E		
(21-38) F		
(1-20) G		
<i>Not energy efficient - higher running costs</i>		

England, Scotland & Wales EU Directive 2002/91/EC





Llawr Cynta
1st Floor



Ail lawr
2nd Floor