

# Crispin Way

Hillingdon • Middlesex • UB8 3WS

PCM: £1,575 PCM



coopers  
est 1986



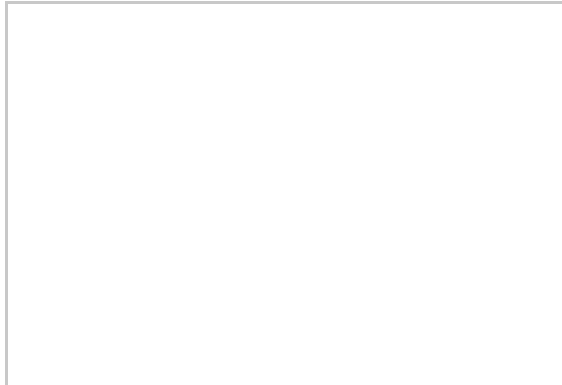




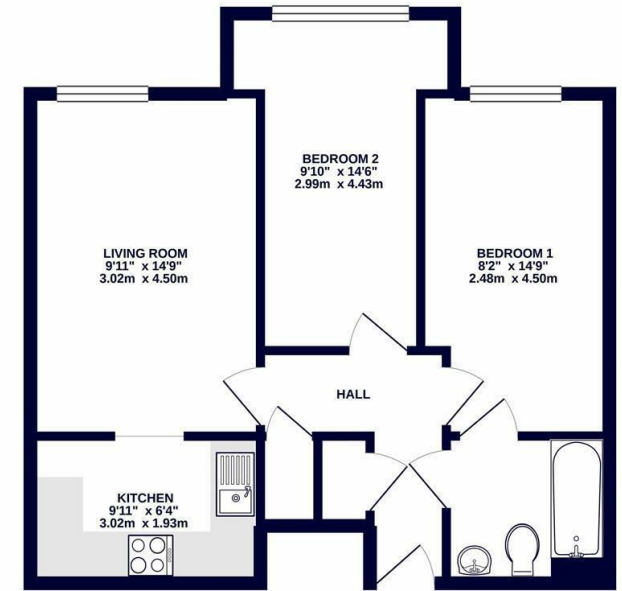
An immaculate TWO BEDROOM top floor apartment located opposite Hillingdon Hospital, close to Brunel University, Stockley Business Park and a short bus journey to Uxbridge Town Centre. This well presented apartment comprises of two double bedrooms, modern bathroom suite with shower, Fully fitted kitchen with appliances, light and airy spacious lounge, gas central heating, double glazing, entry phone system and parking.

Two Bedroom Apartment  
 Moments From Hillingdon Hospital  
 Unfurnished  
 Modern Gated Development  
 Parking Available  
 Close to Brunel University  
 Top Floor Apartment  
 Council Tax Band C  
 Local Amenities  
 Great Local Transport

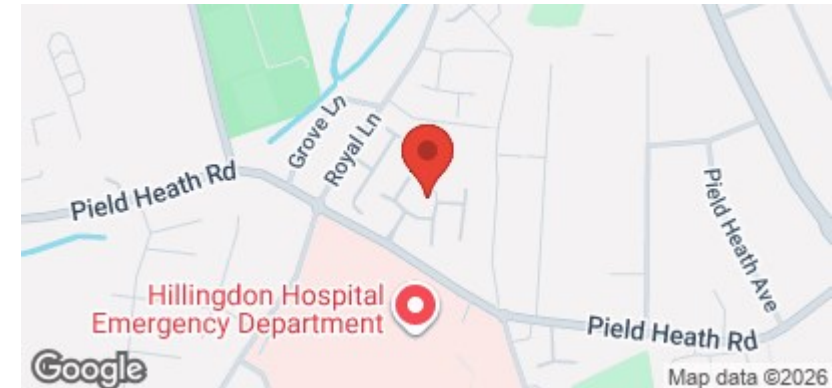
**Available Date**  
 15th December 2025



3RD FLOOR  
 547 sq.ft. (50.8 sq.m.) approx.

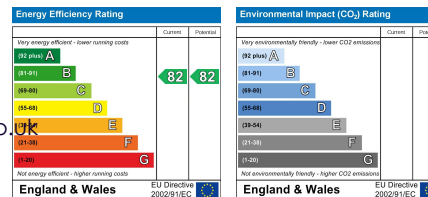


TOTAL FLOOR AREA : 547 sq ft. (50.8 sq.m.) approx.  
 Whilst every attempt has been made to ensure the accuracy of the floorplan contained herein, measurements of doors, windows, rooms and any other items are approximate and no responsibility is taken for any error, omission or mis-statement. This plan is for illustrative purposes only and should be used as such by any prospective purchaser. The services, systems and appliances shown have not been tested and no guarantee as to their operability or efficiency can be given.  
 Made with Metagix ©2020



**coopers**  
 est 1986

**01895 257 566**  
**1 Vine Street, Uxbridge,**  
**Middlesex, UB8 1QE**  
 propertymanagement@coopersresidential.co.uk  
**CoopersResidential.co.uk**



Important Notice: These particulars, whilst believed to be accurate are set out as a general outline only for guidance and do not constitute any part of an offer or contract. Intending purchasers should not rely on them as statements or representation of fact, but must satisfy themselves by inspection or otherwise has the authority to make or give any representation or warranty in respect of the property.