



MOORING PLOT RIVERSIDE PARK, ST OLAVES  
£18,500 FREEHOLD

**WATERSIDE**  
ESTATE AGENTS





# MOORING PLOT RIVERSIDE PARK MOORINGS, PRIORY ROAD, ST OLAVES, NORFOLK NR31 9HQ

- Freehold mooring plot set just off the River Waveney
- Stern on mooring measuring approximately 20' x 9'6"
- Total plot size approx 70' x 9'6"
- Off road parking for 2/3 cars
- Secure and private location accessed via a locked gate.

A freehold mooring plot set just off the River Waveney offering picturesque panoramic views, peace and quiet and private off road parking for 2/3 cars.

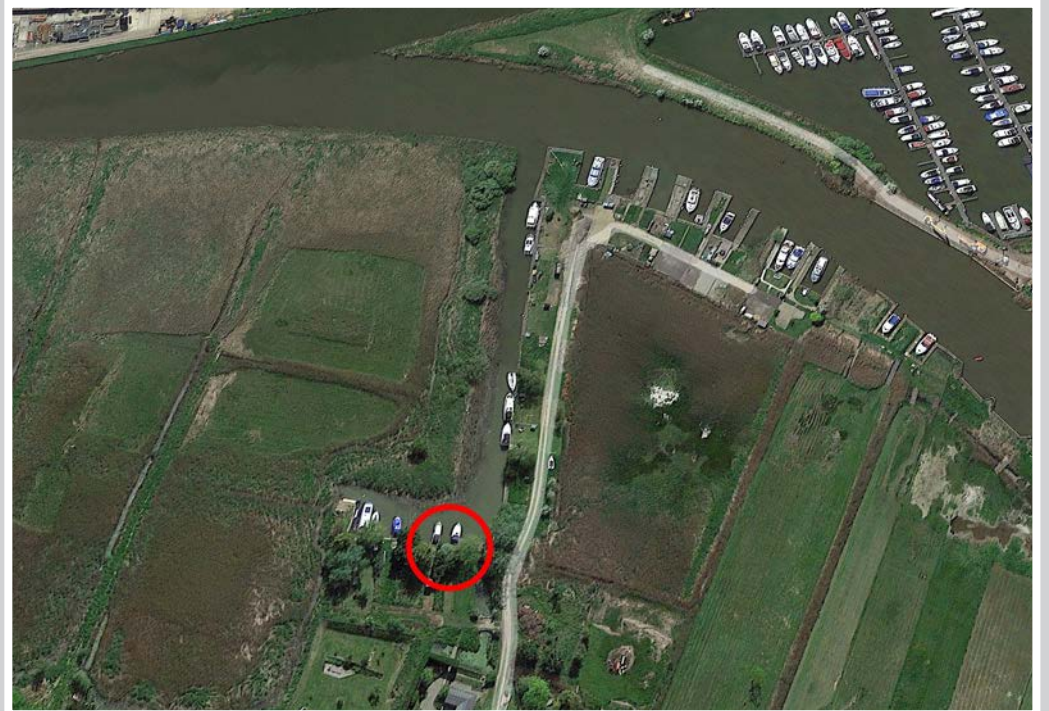
Overall the plot measures approximately 70' x 9'6". Laid mainly to lawn with raised timber staging leading to the water's edge providing a stern on mooring measuring approximately 20' x 9'6".

Riverside Park offers a private and secure location, accessed via a locked gate. St Olaves is a well regarded, unspoilt village, the perfect base from which to explore the entire Norfolk Broads network with access out to sea at both Great Yarmouth and Lowestoft.

Whilst it is our intention that these sales particulars offer a fair and accurate account, they are provided for guidance purposes only and do not constitute part of any offer or contract.

All measurements are approximate and we have not tested any equipment or services, and no warranty is given or implied that these are in working order.

Prospective purchasers are advised to satisfy themselves by inspection or by further investigation via their solicitor or surveyor.





WATERSIDE ESTATE AGENTS  
Broads Haven, Potter Heigham, Norfolk NR29 5JD

Tel: 01692 670400  
Email: [sales@watersideestateagents.com](mailto:sales@watersideestateagents.com)  
[www.watersideestateagents.com](http://www.watersideestateagents.com)