



## Therapia Road, SE22

£675,000

A beautifully presented ground floor apartment offering three bedrooms, generous interiors and the rare advantage of a private garden. Situated on a quiet residential street, the property combines period charm with modern comfort.

Therapia Road sits within a leafy pocket of East Dulwich, a short distance from Lordship Lane's mix of independent shops, restaurants and cafés. Transport connections are convenient, with Honor Oak station providing swift links into London Bridge and Canary Wharf, alongside nearby bus routes serving the City and West End.

### Features

- Victorian Conversion
- Three Bedrooms
- Private Garden
- Off Street Parking
- Private Entrance
- Share Of Freehold

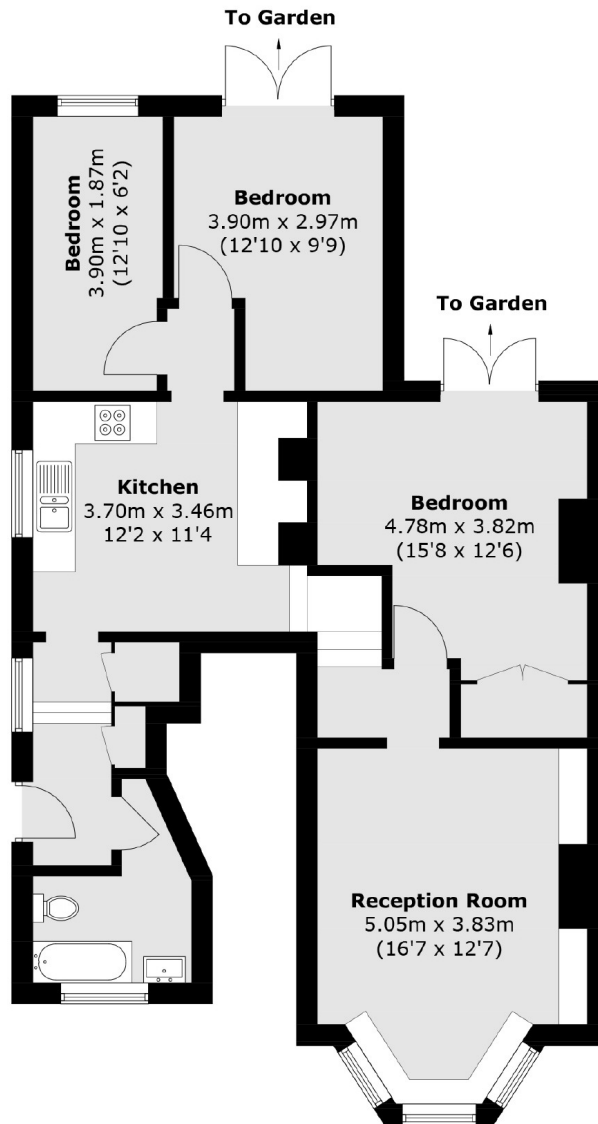


## Therapia Road, SE22

Stepping inside, the accommodation flows from a central hallway into a bright reception space that opens seamlessly onto the garden, creating an inviting environment for both relaxation and entertaining. The kitchen is fitted with contemporary cabinetry and ample workspace, while the bedrooms, two doubles and one single are arranged to provide flexibility for family living, guests or home working. A well appointed bathroom completes the layout, with the overall sense of proportion enhanced by high ceilings and natural light throughout.



# Therapia Road, London, SE22



## Ground Floor

Total area (approx.): 79.8 sq. m (858.9 sq. ft)