



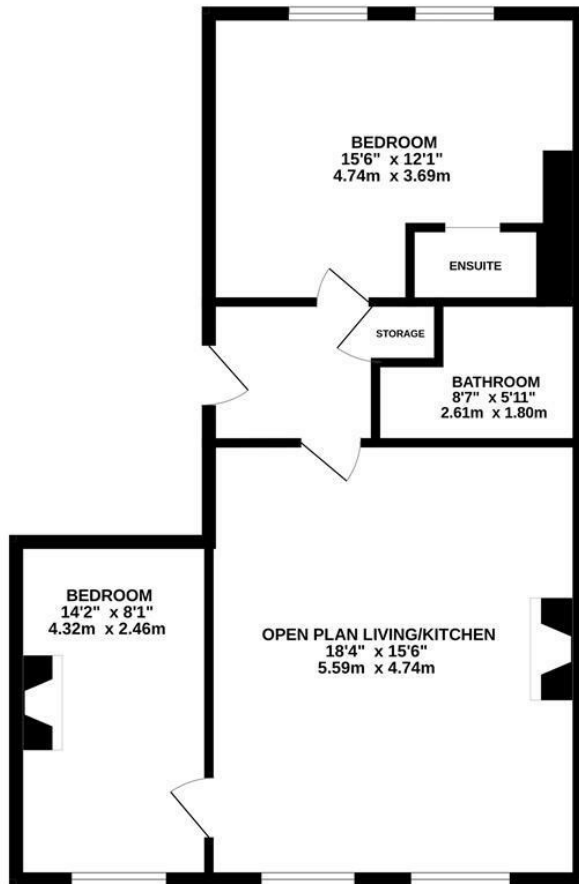
Anglesea Terrace, St Leonards-On-Sea TN38 0QS

Offers in excess of £275,000



A simply stunning TWO BEDROOM APARTMENT set on the SECOND FLOOR of this attractive residence in a LEAFY ST. LEONARDS street, adjacent to Gensing Gardens. It's ideally located just a short stroll into the hub of St. Leonards where there is a mainline railway station, local shops and award winning eateries making it perfectly placed for LIFE BY THE SEA. BEAUTIFULLY PRESENTED throughout, the accommodation here is accessed through a grand communal entrance and boasts a WEALTH OF PERIOD FEATURES including exposed wooden floorboards and original sash windows. The OPEN PLAN LIVING SPACE enjoys a feature fireplace as well as a framed view of Gensing Gardens whilst the kitchen is fitted with CONTEMPORARY UNITS and enjoys a BREAKFAST BAR. There are two DOUBLE BEDROOMS with the primary enjoying a BUILT IN WARDROBE and STYLISH SHOWER ROOM, and a fitted bathroom where there is a bath with shower and screen over. Set in a SOUGHT AFTER LOCATION, this stunning property would make the perfect FIRST TIME HOME or SEASIDE RETREAT and is not to be missed.

GROUND FLOOR
657 sq.ft. (61.0 sq.m.) approx.



TOTAL FLOOR AREA : 657 sq.ft. (61.0 sq.m.) approx.

Whilst every attempt has been made to ensure the accuracy of the floorplan contained here, measurements of doors, windows, rooms and any other items are approximate and no responsibility is taken for any error, omission or mis-statement. This plan is for illustrative purposes only and should be used as such by any prospective purchaser. The services, systems and appliances shown have not been tested and no guarantee as to their operability or efficiency can be given.
Made with Metreplex ©2025

