



Guide Price
£50,000

Leasehold

1x  1x  1x 

**High Street, Sheerness,
Kent, ME12**

OVER 60?

Secure this property
for up to **59% less!**

Wards
Helping you move forwards



Main features

- **Converted first floor flat**
- **Added bonus of a loft area for extra storage**
- **Just around the corner from the picturesque canal**
- **Only a short stroll to the shops on the High street**
- **Nice size kitchen/lounge area**

Accommodation

FIRST FLOOR

Entrance Hall

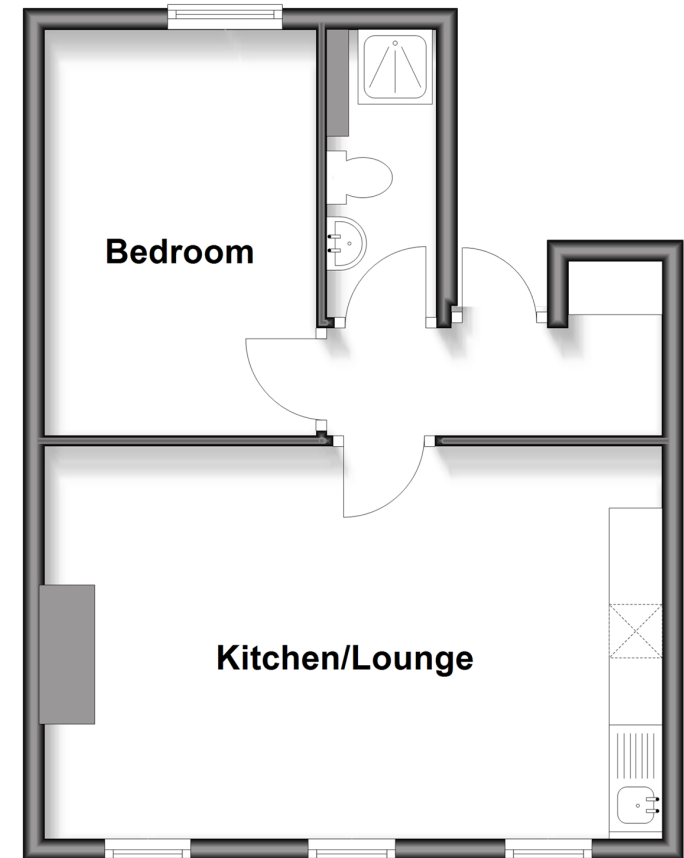
Kitchen/Lounge: 18'8 x 11'6 (5.69m x 3.51m)

Bedroom: 12'0 x 7'8 (3.66m x 2.34m)

Bathroom: 8'8 x 3'7 (2.64m x 1.09m)

First Floor

Approx. 38.7 sq. metres (417.1 sq. feet)



Call Sheerness - 01795 664651 ■ wardsof Kent.co.uk

- If buying to let, the energy rating will need to be improved to at least 'E' rating before you can let the property
- Legal advice should be taken to verify fixtures/fittings, planning, alterations and/or lease details
- Appliances & services are untested, dimensions are approximate and floor plans are not to scale
- Through a Homewise Home For Life Plan people aged 60+ can secure this property for up to 59% less, by purchasing a Lifetime Lease



11635849/20260114/DS/MH