



TABLEY ROAD, N7

£550,000

Private Rear Garden
Period Conversion
Ground Floor
Spacious Living Room
On Street Parking
Low Service Charges

@marshandparsons
marshandparsons.co.uk

MARSH &
PARSONS



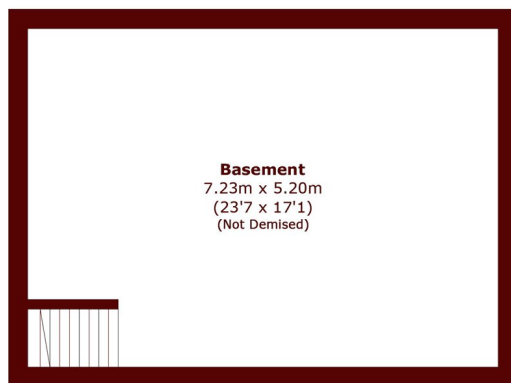
ABOUT THE PROPERTY

A beautifully presented one bedroom period conversion featuring a warm and inviting living room with a fireplace and charming period details, a family bathroom, a kitchen with space for dining, and a private rear garden.

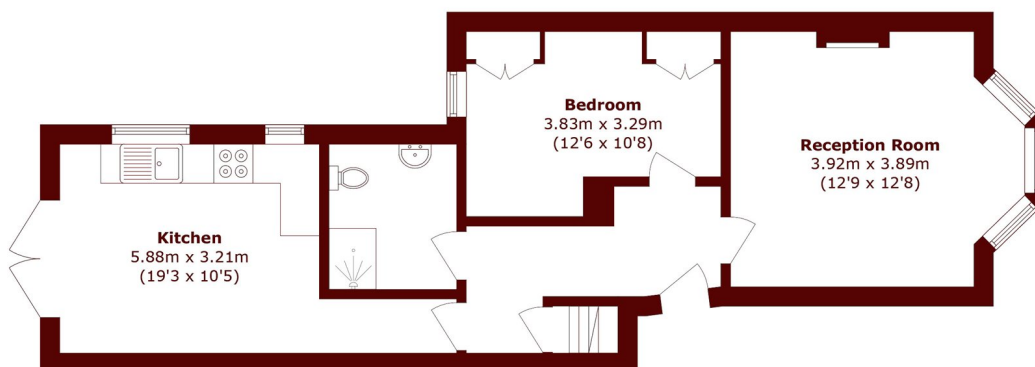
Tabley Road is conveniently located within easy reach of the extensive shopping and transport amenities of Holloway Road. Tufnell Park (Northern line), Caledonian Road (Piccadilly line), and Upper Holloway (Overground) stations are all just a short walk away.



STEP INSIDE TABLEY ROAD



Basement



Ground Floor

Total area (approx.): 54.8 sq. m (589.9 sq. ft)
(Excluding Eaves)
Basement area (approx.): 37.6 sq. m (404.7 sq. ft)

Camden
020 7244 2200

Energy Rating: D We aim to make our particulars both accurate and reliable. However, they are not guaranteed; nor do they form part of an offer or contract. If you require clarification on any points then please contact us, especially if you're traveling some distance to view. Please note that appliances and heating systems have not been tested and therefore no warranties can be given as to their good working order

**MARSH &
PARSONS**