

For Sale



People Make Places



Great Newport Street, Covent Garden WC2

3 Bedrooms | 1369 sqft

£1,600,000





Located in the centre of London's vibrant West End, this unique duplex apartment forms part of a recently completed and beautifully finished modern development between Covent Garden & Soho. The entrance hall and three bedrooms on the upper level all feature generous ceiling heights, the two main suites have beautifully appointed luxury bathrooms.

What you need to know

- Three Double Bedrooms
- Two Modern Bathrooms
- Duplex Apartment
- Private Patio Garden
- Located Over Ground and Lower Ground
- Large Open Plan Living Room / Kitchen
- Service Charge: £7474 Per Annum
- Leasehold: 992 Years



Great Newport Street, Covent Garden WC2



Overview

The lower level features an open plan living space of great proportions, again with excellent volume and featuring full height glazing with doors opening on to the private terrace garden to the rear, a very rare and unique feature for a West End apartment, providing wonderful space for both internal and al-fresco entertaining.

The high specification includes a contemporary high-gloss kitchen with quartz worktops, glazed splashbacks and Miele integrated appliances, as well as further bespoke cabinetry along the wall of the main living area providing ample storage & display space. Comfort cooling and well considered lighting feature throughout the apartment.



Great Newport Street, Covent Garden WC2



Located to the southern end of Long Acre linking Upper St. Martin's Lane and Charing Cross Road, the whole of the West End is literally on the doorstep. Countless restaurants, boutiques, luxury retailers, coffee shops, bars, clubs and more are to hand, not to mention the excellent transport links from nearby Leicester Square, Covent Garden and Charing Cross

Great Newport Street has a rich and varied history dating back to the early 1600's when it was first earmarked for development by the then Earl of Salisbury and named in honour of local resident Mountjoy Blount, Earl of Newport. Large houses were built on the north side of the street and it became a desirable address for the gentry with numerous Lords, Ladies, Earls & Viscounts as residents. Latterly, the street became popular with nobles of a more artistic disposition, with a number of painters and sculptors taking up residence on the street.



Great Newport Street, Covent Garden WC2



People Make Places

London is a collection of inspiring urban villages and one of the most exciting places in the world to live, work & play.

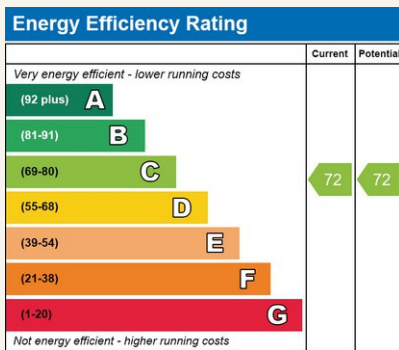
We work with both property owners and their occupiers, sharing the story of these vibrant neighbourhoods, conveying the unique soul & energy to future custodians, the people who'll keep them buzzing.

And unlike many real estate businesses we're not just about buildings, because streets & buildings don't make a neighbourhood.

We're about building relationships, because **people make places**.

MISINTERPRETATION ACT [COPYRIGHT] DISCLAIMER: Tavistock Bow Ltd for themselves and for the vendor(s) of this property whose agents they are, given notice that: 1. These particulars do not constitute, not constitute any part of, an offer or contract. 2. None of the statements contained in these particulars as to the property are to be relied on as statements or representations of fact. 3. Any intending purchaser or lessee must satisfy themselves by inspection or otherwise as to the correctness of each of the statements contained in these particulars. 4. The vendor(s) or lessor(s) do not make or give and neither Tavistock Bow Ltd nor any person in their employment has any authority to make or give any representation or warranty whatever in relation to this property. Finance Act 1989. Unless otherwise stated all prices and rents are quote exclusive of VAT. Property Misrepresentation Act 1991; These details are believed to be correct at the time of compilation but may be subject to subsequent amendment.

Follow us:     @tavistockbow

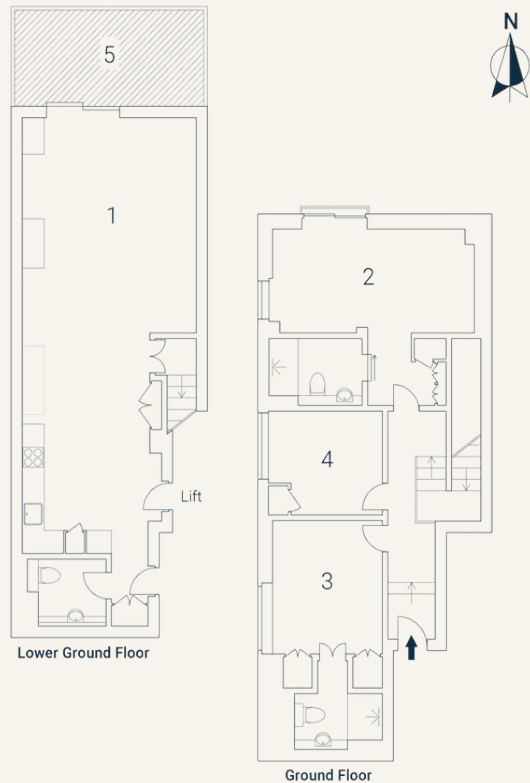


Great Newport Street, WC2

Approximate Gross Internal Area 121 sqm/ 1302 sq ft

Excluding External Courtyard of 13 sqm/ 140 sq ft

1 Living/ Dining/ Kitchen 11.46 x 4.76M 37'7" x 15'7"	2 Bedroom 5.61 x 2.73M 18'5" x 8'11"	3 Bedroom 4.40 x 3.30M 14'5" x 10'10"	4 Bedroom 3.11 x 2.73M 10'2" x 8'11"	5 Courtyard 5.17 x 2.53M 17' x 8'4"
---	--	---	--	---



Floorplan produced for Tavistock Bow. Illustration for identification purposes only and not to scale. All measurements are approximate and not to be relied upon.

tavistockbow

21 New Row, Covent Garden,
London, WC2N 4LE

t: 020 7477 2177
e: hello@tavistockbow.com
w: tavistockbow.com



Great Newport Street, Covent Garden WC2