



Connells

Harley Drive
Walton Milton Keynes



Property Description

This property offers comfortable and modern living throughout. The main living accommodation is open plan in design, featuring attractive laminate flooring and a well-equipped kitchen fitted with an integrated oven, gas hob with extractor hood, sink, and integrated fridge/freezer. Two windows allow an abundance of natural light to fill the space, creating a bright and welcoming environment ideal for both everyday living and entertaining.

The living area is finished with carpet flooring and benefits from a radiator for year-round comfort. A Juliet balcony further enhances the space, providing an open and airy feel while allowing additional natural light to flow through.

Bedroom one is a well-proportioned double bedroom, laid with carpet flooring for comfort and fitted with a radiator and window, making it a bright and pleasant space suitable for a range of furnishings.

The bathroom is fitted with a modern three-piece suite and benefits from a window providing natural light and ventilation. Additional features include a heated towel rail and half-tiled walls, offering a clean and contemporary finish.

Lounge

The room benefits from comfortable carpet flooring, a wall-mounted radiator providing efficient heating, and a Juliet balcony that allows natural light to flow in while offering an open, airy feel to the space.

Kitchen

The open-plan space features stylish laminate flooring and is fitted with a modern integrated oven, gas hob with extractor hood, and sink,

along with an integrated fridge/freezer. Two windows provide plenty of natural light, enhancing the bright and practical layout ideal for modern living.

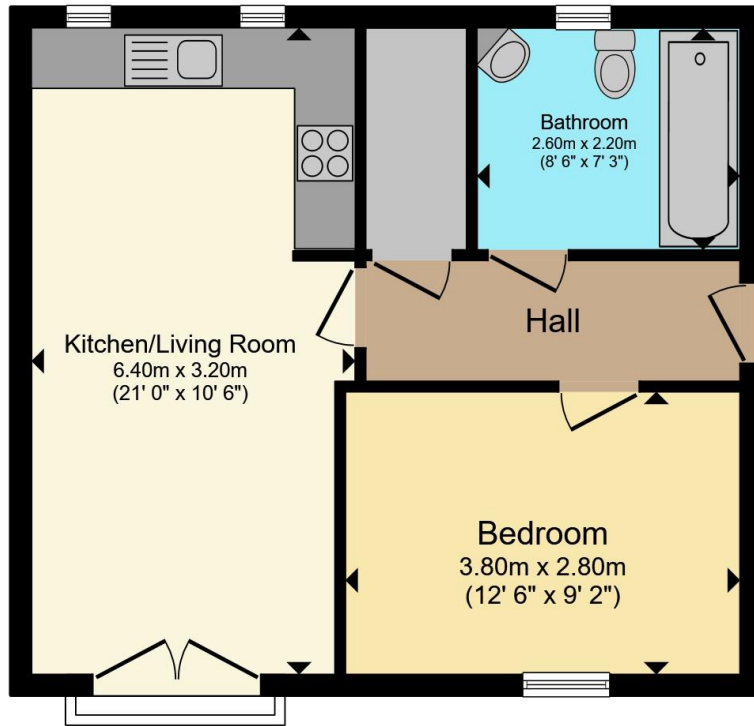
Bedroom One

Bedroom one is finished with carpet flooring for added comfort, features a radiator for heating, and benefits from a window allowing natural light into the room.

Bathroom

The bathroom is fitted with a modern three-piece suite and features a window providing natural light and ventilation. Additional benefits include a heated towel rail and half-tiled walls, offering both practicality and a clean, contemporary finish.





Total floor area 44.8 m² (482 sq.ft.) approx

This floor plan is for illustrative purposes only. It is not drawn to scale. Any measurements, floor areas (including any total floor area), openings and orientation are approximate. No details are guaranteed, they cannot be relied upon for any purpose and they do not form part of any agreement. No liability is taken for any error, omission or misstatement. A party must rely upon its own inspection(s). Powered by www.propertybox.io



To view this property please contact Connells on

T 01908 691606

E walnuttree@connells.co.uk

26A Fyfield Barrow The Walnut Tree Local Centre Walnut Tree

EPC Rating: C

Council Tax Band: A

Service Charge: 1700.00

Ground Rent: 175.00

Tenure: Leasehold

view this property online connells.co.uk/Property/WNT308117

This is a Leasehold property with details as follows; Term of Lease 150 years from 01 Jan 2011. Should you require further information please contact the branch. Please Note additional fees could be incurred for items such as Leasehold packs.



1. MONEY LAUNDERING REGULATIONS Intending purchasers will be asked to produce identification documentation at a later stage and we would ask for your co-operation in order that there will be no delay in agreeing the sale. 2. These particulars do not constitute part or all of an offer or contract. 3. The measurements indicated are supplied for guidance only and as such must be considered incorrect. Potential buyers are advised to recheck measurements before committing to any expense. 4. We have not tested any apparatus, equipment, fixtures, fittings or services and it is in the buyers interest to check the working condition of any appliances.

Connells Residential is registered in England and Wales under company number 1489613, Registered Office is Cumbria House, 16-20 Hockliffe Street, Leighton Buzzard, Bedfordshire, LU7 1GN. VAT Registration Number is 500 2481 05.

See all our properties at www.connells.co.uk | www.rightmove.co.uk | www.zoopla.co.uk

Property Ref: WNT308117 - 0003