





# The Weavers

## Maidstone ME16 0NZ

for sale  
**£400,000**



### Property Description

So you're looking for a dream home in a fantastic location? Look no further than this gorgeous three-bedroom detached house in Allington. With its three spacious double bedrooms, it's the perfect spot for families to grow and make memories. And the best part? It's got tons of potential for extension, so you can put your own personal stamp on it and make it truly yours (just remember to check with the planning folks first).

The living room is the heart of the home, and this one's a real showstopper, serving as the perfect spot to chill out, have movie nights, or host dinner parties. And when you need some fresh air, just step outside into your private rear garden - it's like having your own little oasis. Plus, with a detached garage and off-street parking, you can keep your cars safe and sound.

One of the things that really sets this house apart is its location. The schools in the area are top-notch, so you can rest easy knowing your kids are getting a great education. And with all the space and potential for growth, this house is basically the ultimate family home. So what are you waiting for? Come take a look and make this house your dream home.



**Entrance Hall**

**Cloakroom**

**Lounge**

14' 1" Max x 13' 11" Max ( 4.29m Max x 4.24m Max )

**Dining Room**

10' 11" x 8' 5" ( 3.33m x 2.57m )

**Kitchen**

10' 11" x 8' 8" ( 3.33m x 2.64m )

**Landing**

**Bedroom One**

9' 11" Plus Wardrobe Recess x 9' 9" ( 3.02m Plus Wardrobe Recess x 2.97m )

**Bedroom Two**

11' 4" x 9' 2" Plus Recess ( 3.45m x 2.79m Plus Recess )

**En Suite**

**Bedroom Three**

10' 11" Into Bay x 7' 2" Max ( 3.33m Into Bay x 2.18m Max )

**Bathroom**

**Front Garden**

**Rear Garden**

**Garage**

**Driveway**

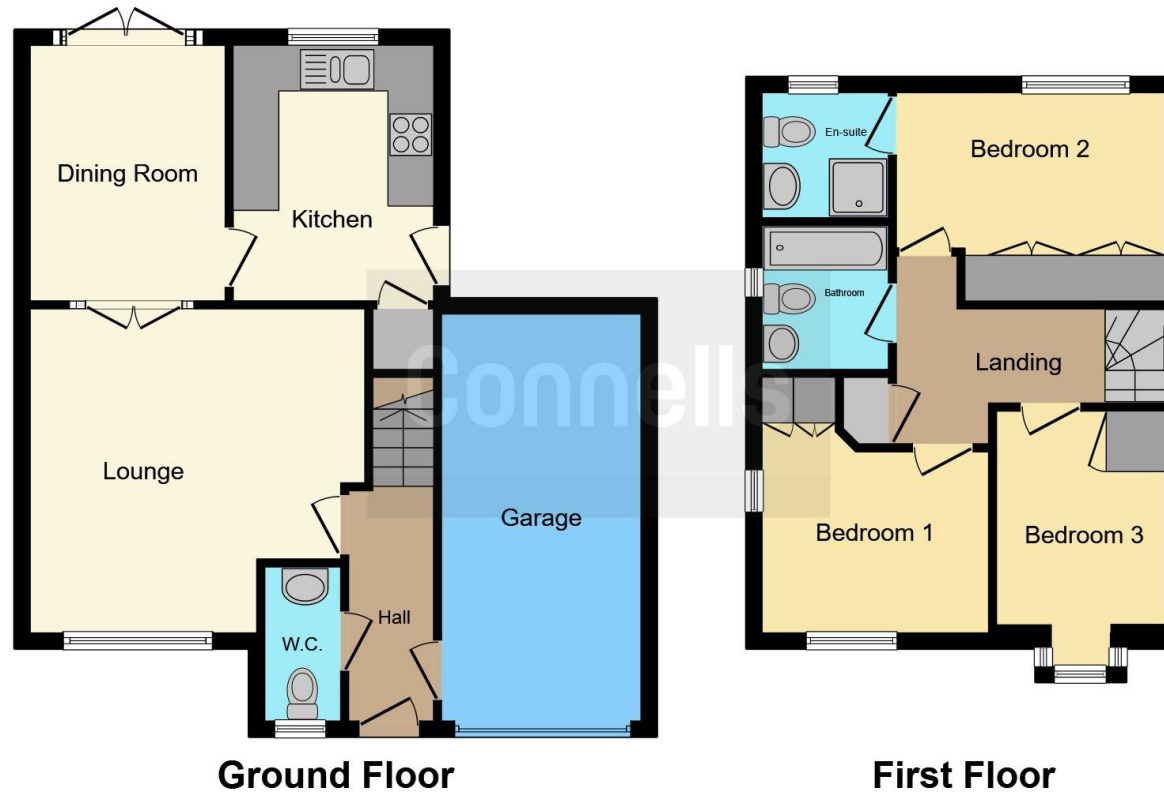












This floor plan is for illustrative purposes only. It is not drawn to scale. Any measurements, floor areas (including any total floor area), openings and orientation are approximate. No details are guaranteed, they cannot be relied upon for any purpose and they do not form part of any agreement. No liability is taken for any error, omission or misstatement. A party must rely upon its own inspection(s). Powered by [www.focalagent.com](http://www.focalagent.com)

To view this property please contact Connells on

**T 01622 751034**  
**E [maidstone@connells.co.uk](mailto:maidstone@connells.co.uk)**

30 King Street  
 MAIDSTONE ME14 1BS

EPC Rating: D Council Tax  
 Band: E

Tenure: Freehold

**view this property online** [connells.co.uk/Property/MAI408046](http://connells.co.uk/Property/MAI408046)



1. MONEY LAUNDERING REGULATIONS Intending purchasers will be asked to produce identification documentation at a later stage and we would ask for your co-operation in order that there will be no delay in agreeing the sale. 2. These particulars do not constitute part or all of an offer or contract. 3. The measurements indicated are supplied for guidance only and as such must be considered incorrect. Potential buyers are advised to recheck measurements before committing to any expense. 4. We have not tested any apparatus, equipment, fixtures, fittings or services and it is in the buyers interest to check the working condition of any appliances.

Connells Residential is registered in England and Wales under company number 1489613, Registered Office is Cumbria House, 16-20 Hockliffe Street, Leighton Buzzard, Bedfordshire, LU7 1GN. VAT Registration Number is 500 2481 05.

**See all our properties at [www.connells.co.uk](http://www.connells.co.uk) | [www.rightmove.co.uk](http://www.rightmove.co.uk) | [www.zoopla.co.uk](http://www.zoopla.co.uk)**

Property Ref: MAI408046 - 0018