



**Guide Price**  
**£325,000**

**Leasehold**

2x  1x  1x 

**Douglas House,  
Edenside Road,  
Bookham, Leatherhead,  
Surrey, KT23**

**OVER 60?**

Secure this property  
for up to **59% less!**

**cubitt&west**  
Helping you move forwards





## Main features

- Open plan kitchen/lounge/diner
- Bright and spacious modern living
- Ground floor with easy access to communal gardens
- Set in the popular village of Bookham
- Purchase 100% or a 40% share

## Accommodation

### GROUND FLOOR

Hallway

Kitchen/Lounge/Diner: 20'1 x 13'0 (6.13m x 3.97m)

Bedroom 1: 14'3 x 10'5 (4.35m x 3.18m)

Bedroom 2: 11'4 x 8'5 (3.46m x 2.57m)

Bathroom

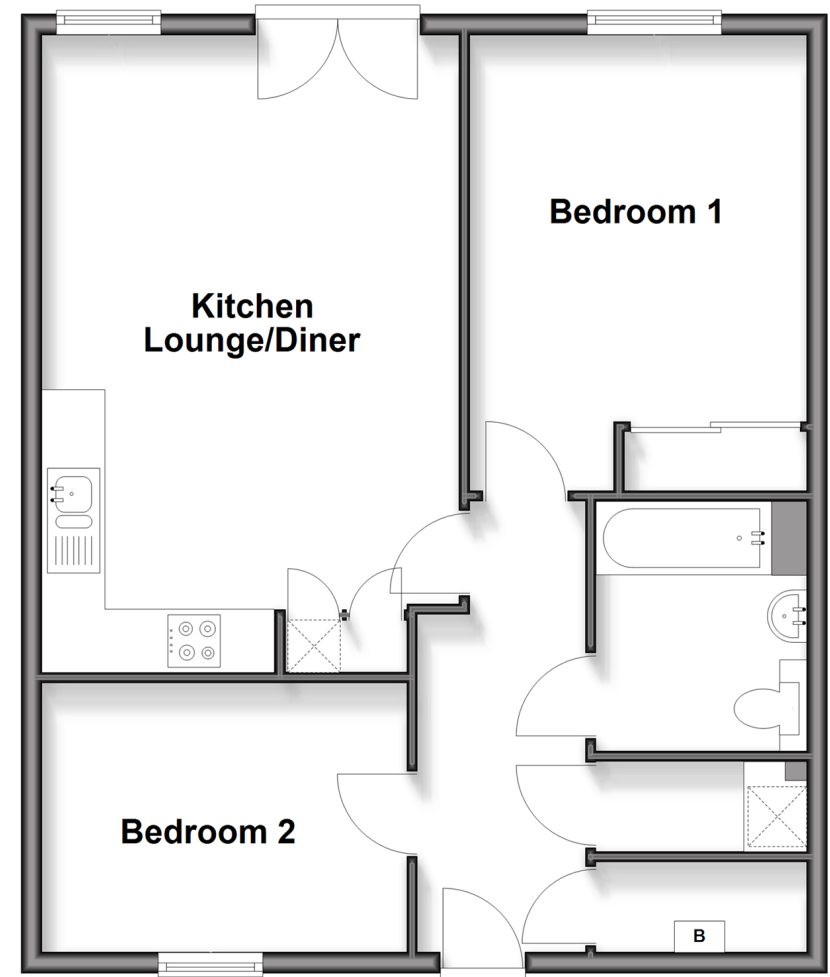
### OUTSIDE

Allocated Parking

Communal Garden

## Ground Floor

Approx. 64.0 sq. metres (688.5 sq. feet)



**Call Leatherhead - 01372 373780 ■ CubittAndWest.Co.Uk**

- Legal advice should be taken to verify fixtures/fittings, planning, alterations and/or lease details
- Appliances & services are untested, dimensions are approximate and floor plans are not to scale
- Through a Homewise Home For Life Plan people aged 60+ can secure this property for up to 50% less, by purchasing a Lifetime Lease.



21108415/20251104/MB1/JL