

Sarah
Mains...



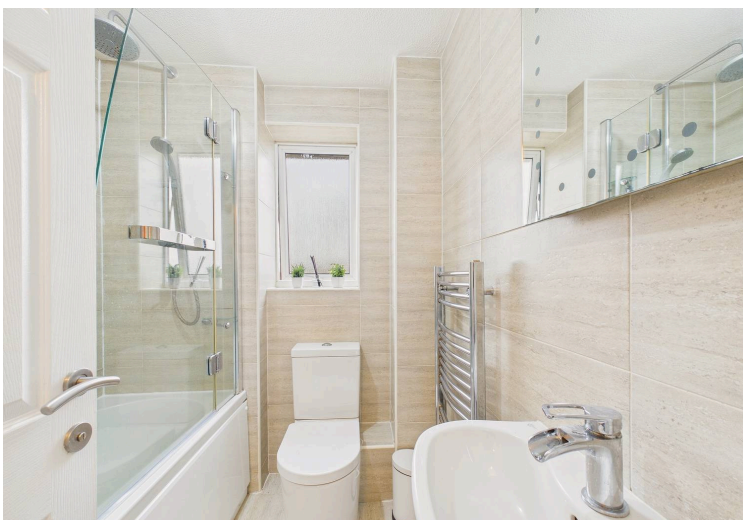
39 Seaton Close, Gateshead – NE10 8SF

£170,000 Freehold

sarahmains.com









Council Tax band: C

Tenure: Freehold

EPC Energy Efficiency Rating: C

EPC Environmental Impact Rating:

- Three Bedroom Family Home
- Beautifully Presented
- Fitted Dining Kitchen
- Modern Bathroom
- Garage and Gardens
- Popular Location

Entrance Lobby

Lounge

14' 2" x 14' 1" (4.32m x 4.30m)

Dining Kitchen

14' 4" x 9' 2" (4.36m x 2.79m)

First Floor Landing

Bedroom One

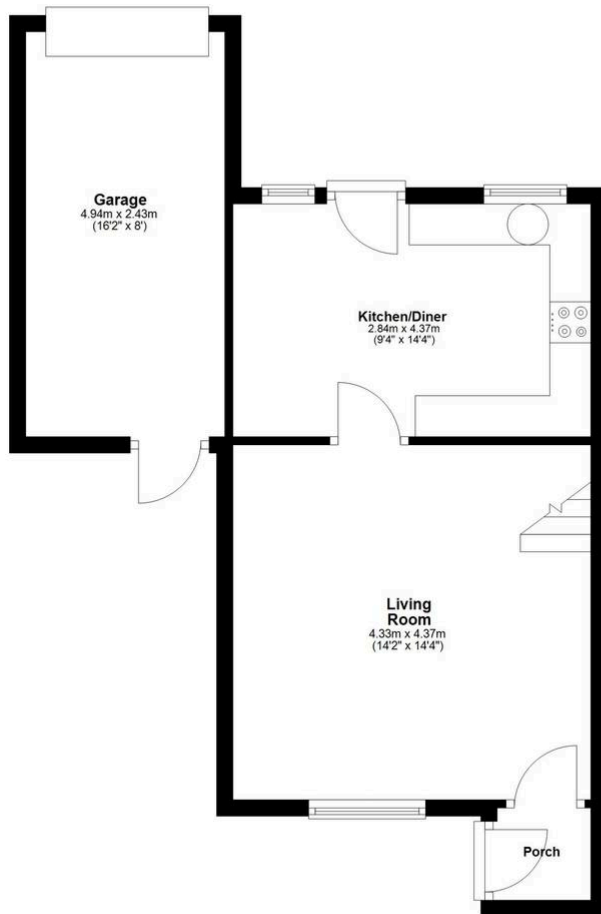
13' 6" x 8' 1" (4.11m x 2.46m)

Bedroom Two

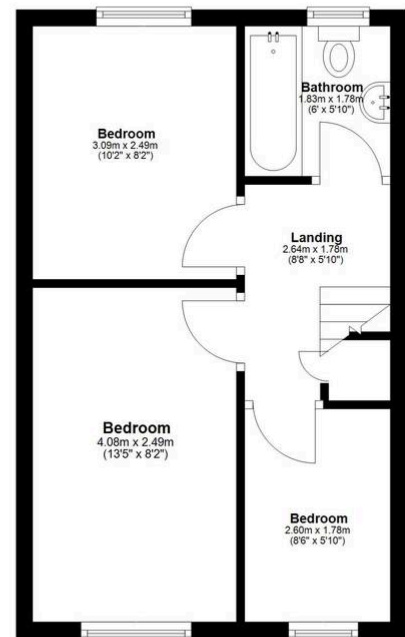
9' 9" x 8' 0" (2.97m x 2.45m)



Ground Floor



First Floor



Note : Plans are for Illustration purposes only and are not to scale.
Plan produced using PlanUp.

You can include any text here. The text can be modified upon generating your brochure.



GARDEN



Sarah Mains...

You can include any text here. The text can be modified upon generating your brochure.

Newcastle

0191 240 3333
js@sarahmains.com

Low Fell

0191 487 8855
lfs@sarahmains.com

Whickham

0191 488 9999
ws@sarahmains.com

sarahmains.com