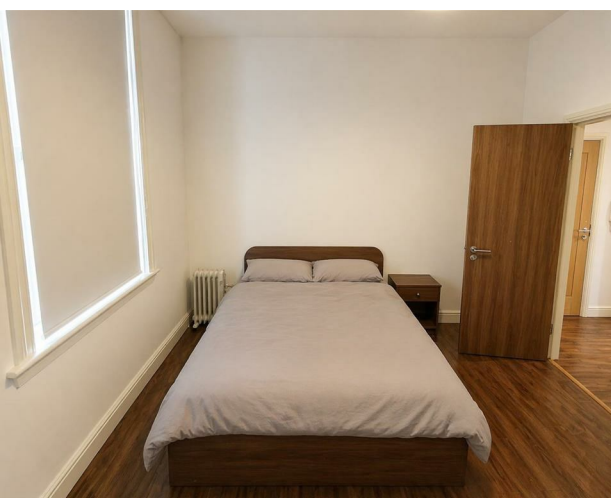
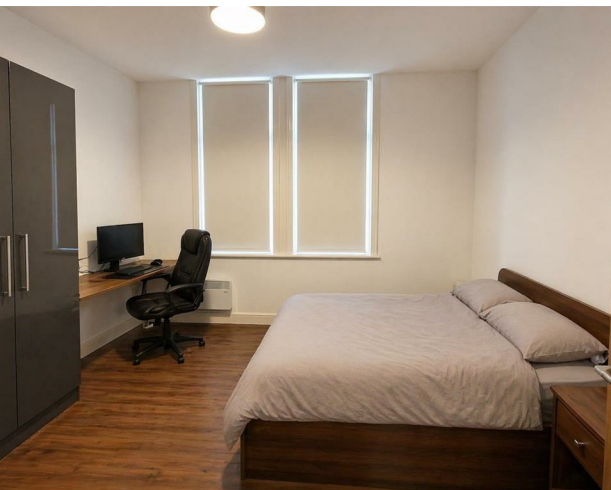


Flat 3, 26 Hyde Terrace, Leeds, LS2 9LN  
£1,300 Per month

**V&L**  
PROPERTIES

A smiling woman with long brown hair, wearing a grey cardigan and blue jeans, sitting and holding a white mug. The background is a blue gradient with a faint floral pattern.

# GO ALL IN

on an all-inclusive  
utility package.

- 
- 
- 
- 
-

**Flat 3, 26 Hyde Terrace, Leeds, LS2 9LN**

**£1,300 Per month**

**Council Tax Band:**

Stylish and modern 2-bedroom flat with en suite bathrooms in a prime location on Hyde Terrace, Leeds.

2 mins walk to Leeds Dental School  
6 mins walk to Leeds General Infirmary  
9 mins walk to Leeds Beckett University  
15 mins walk to Leeds City Centre

Perfect for students or professionals. Close to shops, cafes, and local amenities.





22 Regent Street  
 Leeds  
 LS2 7QA  
 01133 225737  
[info@vgl-properties.co.uk](mailto:info@vgl-properties.co.uk)  
[vgl-properties.co.uk](http://vgl-properties.co.uk)

