



## 110 Ash Road

Aldershot, GU12 4EY

£1,450 Per Month

This delightful turn of the Century terraced House, presented in very good condition throughout offers a comfortable living space and a generous dining space behind. The galley style Kitchen which has been updated, has a good range of storage and worktop area, and from there a door leads out to the back Garden.

Upstairs, you will find a lovely bright double bedroom at the front and a smaller bedroom overlooking the back, along with a very good sized and updated bathroom suite. Outside, the garden at the back has been landscaped and benefits from a sunny terraced area with steps to a level lawn.

To the rear there is also access out to the road behind.

Located just moments away from the local shops, Manor Park, the Railway Station and town centre.

### Viewing

Please contact our Fosters Lettings Office on 01252 344333 if you wish to arrange a viewing appointment for this property or require further information.

- 2 Bedroom Terraced House
- Under redecoration
- 1st Floor Bathroom
- Good order throughout
- Double Glazing
- Archive photos - new coming soon
- Available mid January
- Five Weeks Deposit £1673.07
- Council Tax Band C
- Epc rating D ( 64 )



2



1



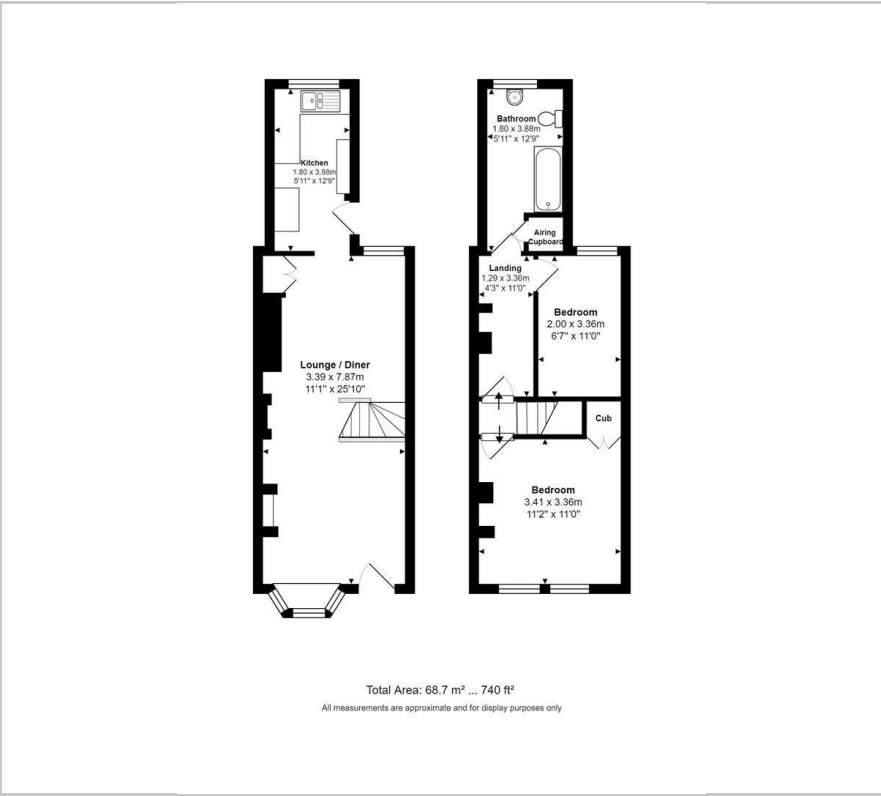
1



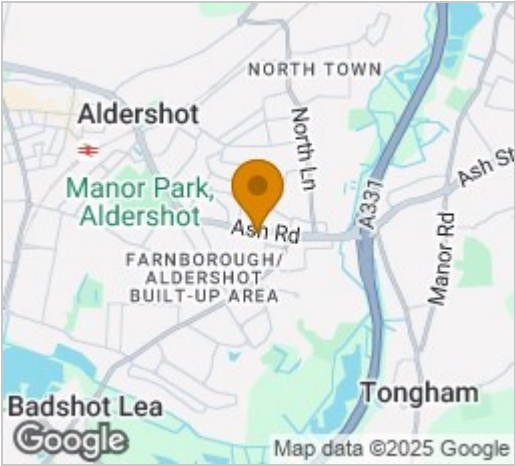
D



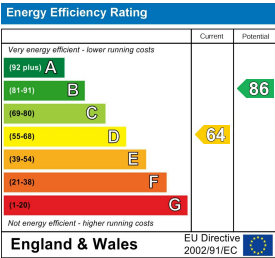
Floor Plan



Area Map



Energy Efficiency Graph



These particulars, whilst believed to be accurate are set out as a general outline only for guidance and do not constitute any part of an offer or contract. Intending purchasers should not rely on them as statements of representation of fact, but must satisfy themselves by inspection or otherwise as to their accuracy. No person in this firms employment has the authority to make or give any representation or warranty in respect of the property.