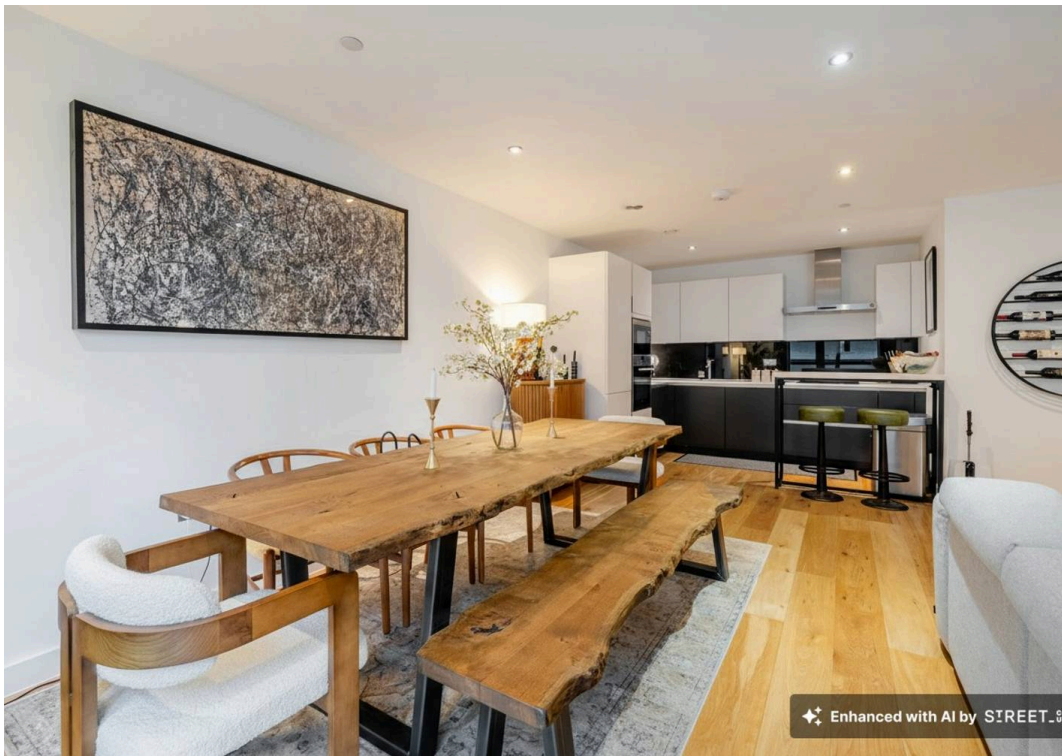


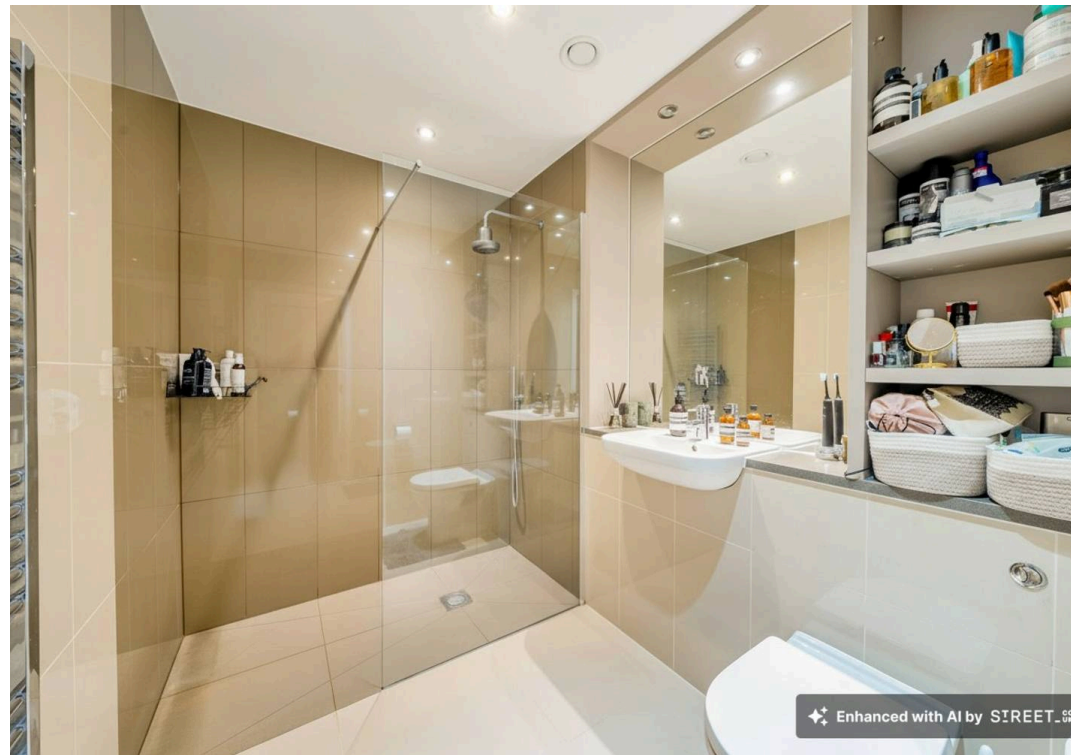
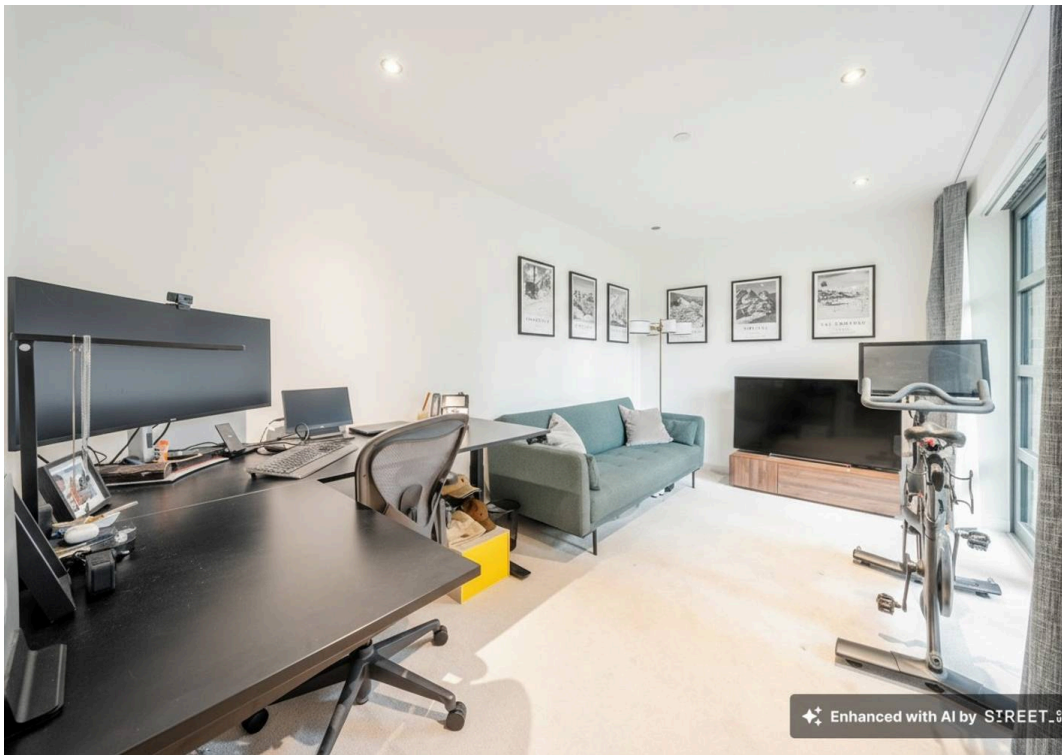
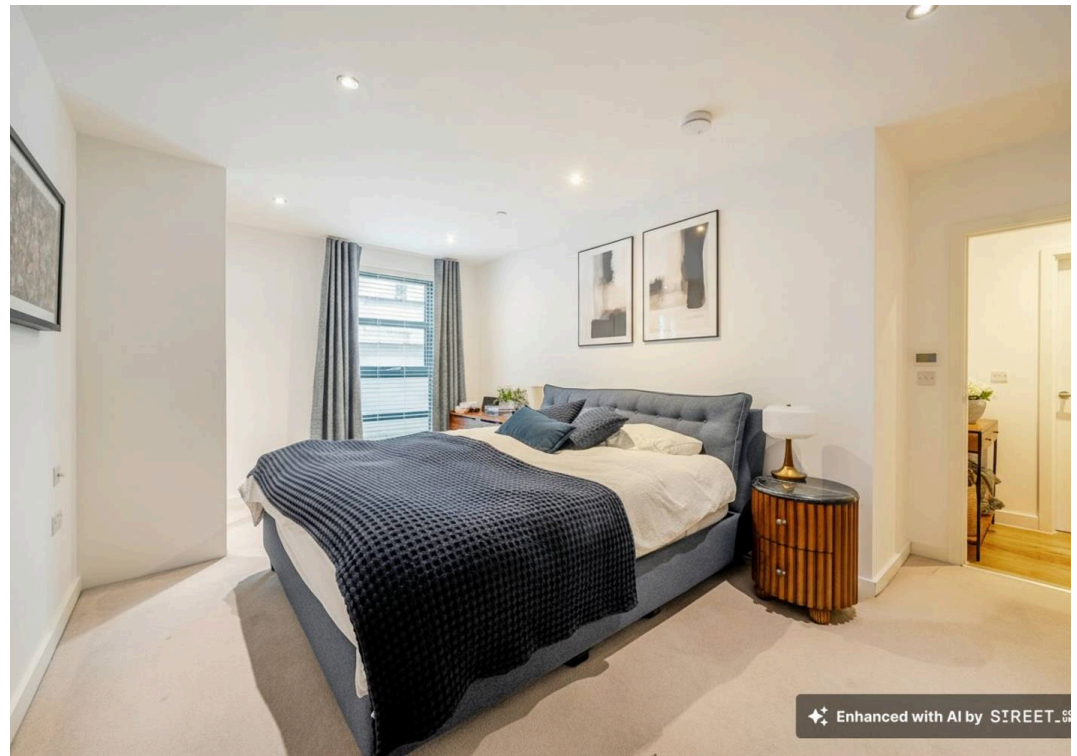
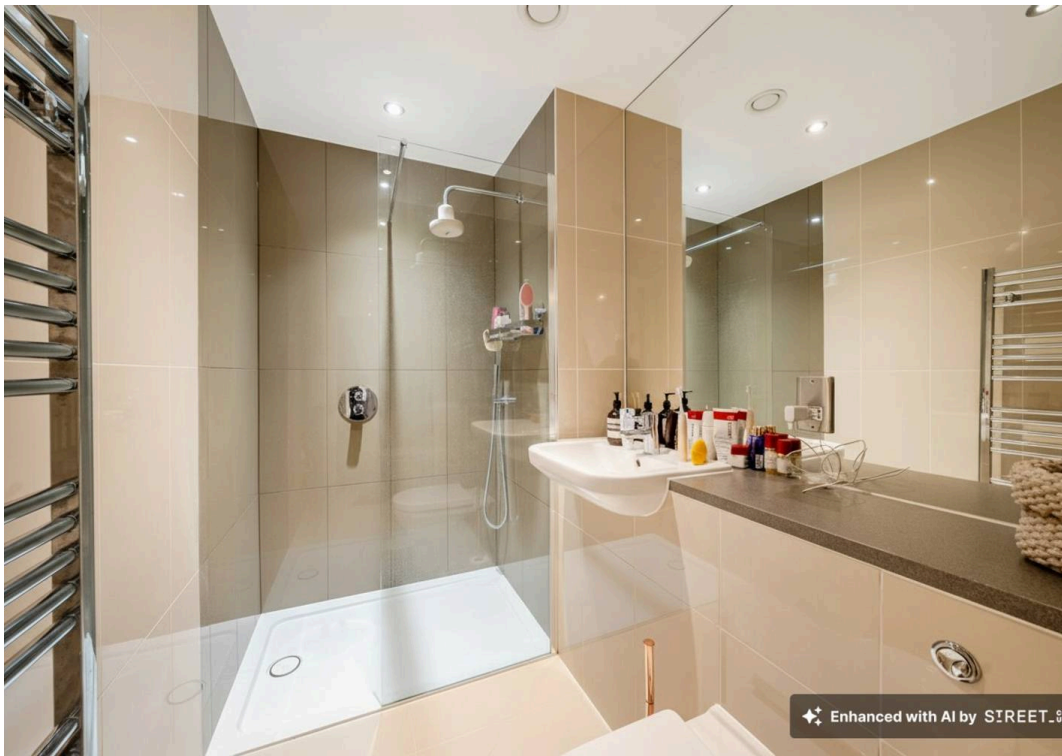
Alwen Court, SE1

Enhanced with AI **£975,000**



✦ Enhanced with AI by STREET_02





Flat 1

Alwen Court, London

A particularly spacious three double bedroom, two shower room apartment with its own entrance and private terrace, conveniently located within easy reach of Bermondsey Street.

Council Tax band: F

Tenure: Leasehold

EPC Energy Efficiency Rating: B

EPC Environmental Impact Rating: B

- Quietly located and secure gated development
- Convenient for Bermondsey Street
- On site concierge
- Ground floor with private terrace
- Landscaped communal gardens
- Underfloor heating throughout
- 999 year lease
- Particularly spacious living space
- Bespoke contemporary kitchen
- Engineered oak wood flooring



Pages Walk, London, SE1

Approximate Area = 1145 sq ft / 106.3 sq m

For identification only - Not to scale



Floor plan produced in accordance with RICS Property Measurement 2nd Edition, Incorporating International Property Measurement Standards (IPMS2 Residential). © n.checom 2026. Produced for Daniel Cobb. REF: 1406645



Daniel Cobb

Daniel Cobb Estate Agents, 82-84 Bermondsey Street – SE1 3UD

020 7357 0026 • londonbridge@danielcobb.co.uk • www.danielcobb.co.uk/