



The Croft, Newton Toney Salisbury SP4 0HG

welcome to

The Croft, Newton Toney Salisbury

This well presented three bedroom mid terrace home offering comfortable living space, a practical layout, and a private rear garden-perfect for first time buyers, young families, or those seeking an easy to maintain property close to local amenities.



Front Garden

Laid to lawn

Entrance Hall

Carpet

Lounge

Carpet, log burner, front aspect double glazed window, radiator, patio door to garden

Dining Room

Front aspect double glazed window, radiator, carpet

Kitchen

Tiled flooring, extractor hood, door to garden, space for fridge freezer, washing machine, cooker

Landing

Carpet

Bedroom One

Carpet, radiator, Rear aspect double glazed window

Bedroom Two

Carpet, radiator, rear aspect double glazed window

Bedroom Three

Front aspect double glazed window, radiator, carpet

Family Bathroom

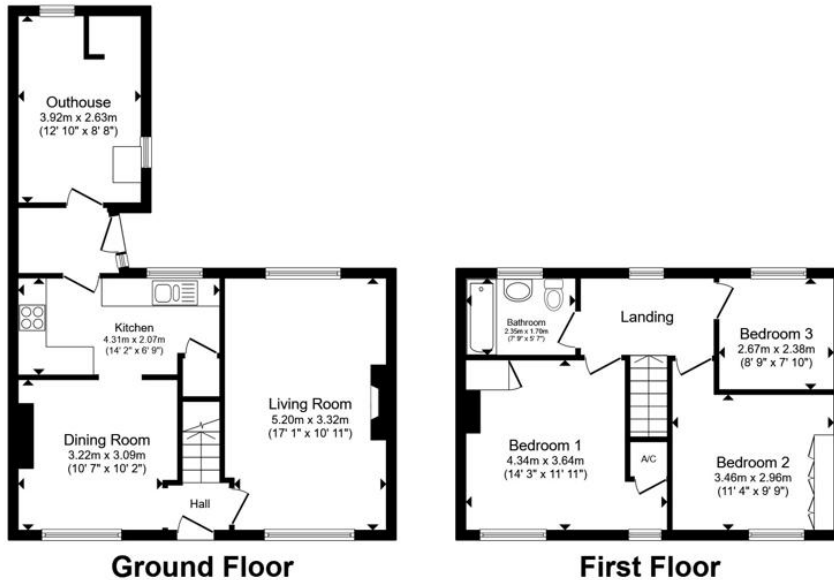
Tiled flooring, bath with over head shower, tiled back splash, front aspect double glazed window, w/c and sink

Rear Garden

Laid to lawn with patio area, fish pond, shed and a purpose built brick shed, oil tank and solar panels

Parking

On-Street



Total floor area 88.1 m² (948 sq.ft.) approx

This floor plan is for illustrative purposes only. It is not drawn to scale. Any measurements, floor areas (including any total floor area), openings and orientation are approximate. No details are guaranteed, they cannot be relied upon for any purpose and they do not form part of any agreement. No liability is taken for any error, omission or misstatement. A party must rely upon its own inspection(s). Powered by www.propertybox.io



view this property online fox-and-sons.co.uk/Property/AME102321



welcome to

The Croft, Newton Toney Salisbury

- Three Bedroom Property
- Separate Dining Room
- Triple Glazed Windows
- Beautiful Scenic Views
- Solar Panels In Garden

Tenure: Freehold EPC Rating: D
Council Tax Band: C

£325,000



Please note the marker reflects the
postcode not the actual property

view this property online fox-and-sons.co.uk/Property/AME102321



Property Ref:
AME102321 - 0003

1. MONEY LAUNDERING REGULATIONS Intending purchasers will be asked to produce identification documentation at a later stage and we would ask for your co-operation in order that there is no delay in agreeing the sale. 2. These particulars do not constitute part or all of an offer or contract. 3. The measurements indicated are supplied for guidance only and as such must be considered incorrect. Potential buyers are advised to recheck measurements before committing to any expense. 4. We have not tested any apparatus, equipment, fixtures or services and it is in the buyers interest to check the working condition of any appliances. 5. Where an EPC, or a Home Report (Scotland only) is held for this property, it is available for inspection at the branch by appointment. If you require a printed version of a Home Report, you will need to pay a reasonable production charge reflecting printing and other costs. 6. We are not able to offer an opinion either written or verbal on the content of these reports and this must be obtained from your legal representative. 7. Whilst we take care in preparing these reports, a buyer should ensure that his/her legal representative confirms as soon as possible all matters relating to title including the extent and boundaries of the property and other important matters before exchange of contracts.


fox & sons



01980 624155



Amesbury@fox-and-sons.co.uk



49 Salisbury Street, AMESBURY, Wiltshire, SP4
7AW



fox-and-sons.co.uk