



2 Scena Way London

£2,700 PCM

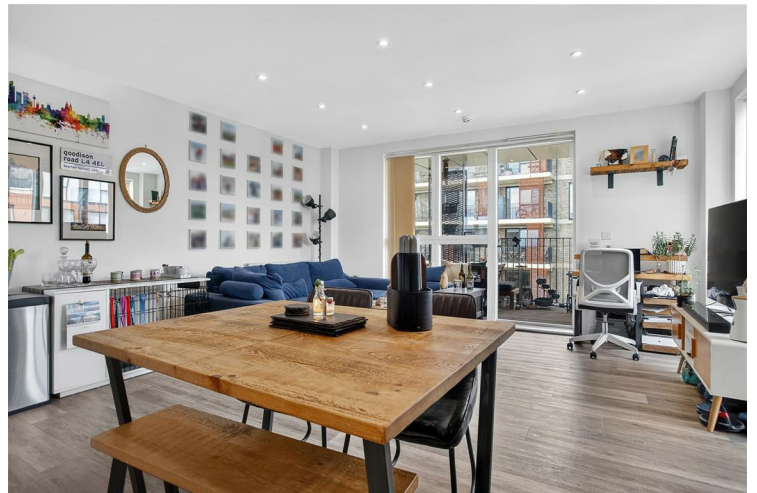
Leonard Leese are pleased to market this beautiful two bedroom apartment forming part of the architecturally designed 'Wing' development in the heart of Camberwell Green. Comprising of a spacious open plan reception with a modern fitted kitchen with a range of high specification integrated appliances, a private balcony, two equally sized double bedrooms and a modern bathroom.

Offered unfurnished.

Call the lettings department to reserve a viewing.

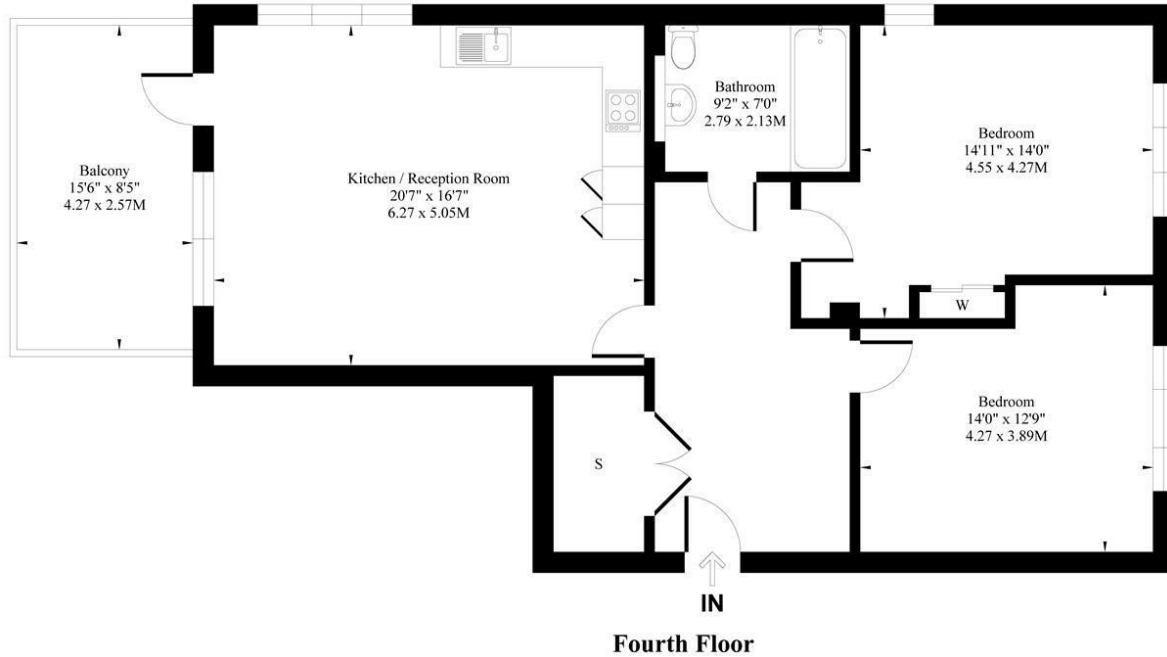


• Two Bedroom Apartment • Unfurnished • Private Balcony • Communal Gardens • Great Location





Fritillary Apartments, 2 Scena Way, The Wing Development, SE5



Approx. Gross Internal Area 986 Sq. Ft / 91.60 Sq. M

Measured in according with RICS guidelines. Every attempt is made to ensure accuracy.
However all measurements are approximate.
The floor plan is illustrative purposes only and is not to scale.



Energy Efficiency Rating		
	Current	Potential
Very energy efficient - lower running costs		
(92 plus) A		
(81-91) B	84	84
(69-80) C		
(55-68) D		
(39-54) E		
(21-38) F		
(1-20) G		
Not energy efficient - higher running costs		
England & Wales	EU Directive 2002/91/EC	

Agents Note: Whilst every care has been taken to prepare these particulars, they are for guidance purposes only. All measurements are approximate and are for general guidance purposes only and whilst every care has been taken to ensure their accuracy, they should not be relied upon and potential buyers/tenants are advised to recheck the measurements

Borough Lettings
230 Borough High Street
London
SE1 1JX

020 7015 1360
enquiries@leonardleese.com
www.leonardleese.com

