

**2 Bed
Flat
located in 44 Whitworth Street**

AiHOMES.

LT257690MNS, 44
Whitworth
Street, Manchester



£2,600 Per Annum

Welcome to this charming flat located at 44 Whitworth Street in the vibrant city of Manchester. Spanning an impressive 801 square feet, this property offers a perfect blend of comfort and modern living. With two well-proportioned bedrooms, it is ideal for professionals, couples, or small families seeking a stylish urban retreat.

The flat features two bathrooms, providing convenience and privacy for residents and guests alike. The layout is thoughtfully designed to maximise space and light, creating a welcoming atmosphere throughout.

Situated in a prime location, you will find yourself surrounded by an array of amenities, including shops, restaurants, and cultural attractions, all within easy reach. The bustling city centre is just a stone's throw away, making it an excellent choice for those who enjoy the vibrancy of city life.

This property presents a fantastic opportunity for anyone looking to invest in a modern flat in Manchester. With its desirable features and prime location, it is sure to attract interest. Do not miss the chance to make this delightful flat your new home.

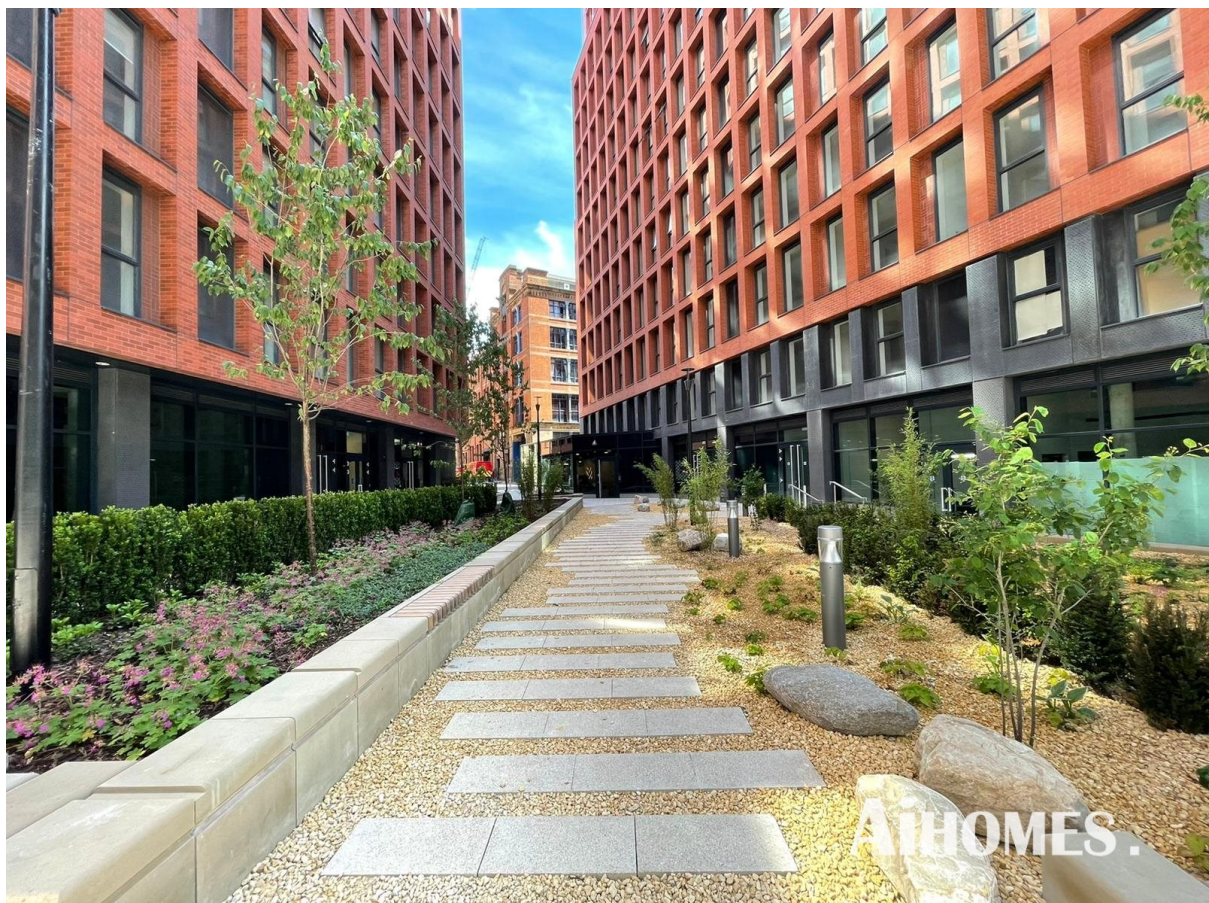




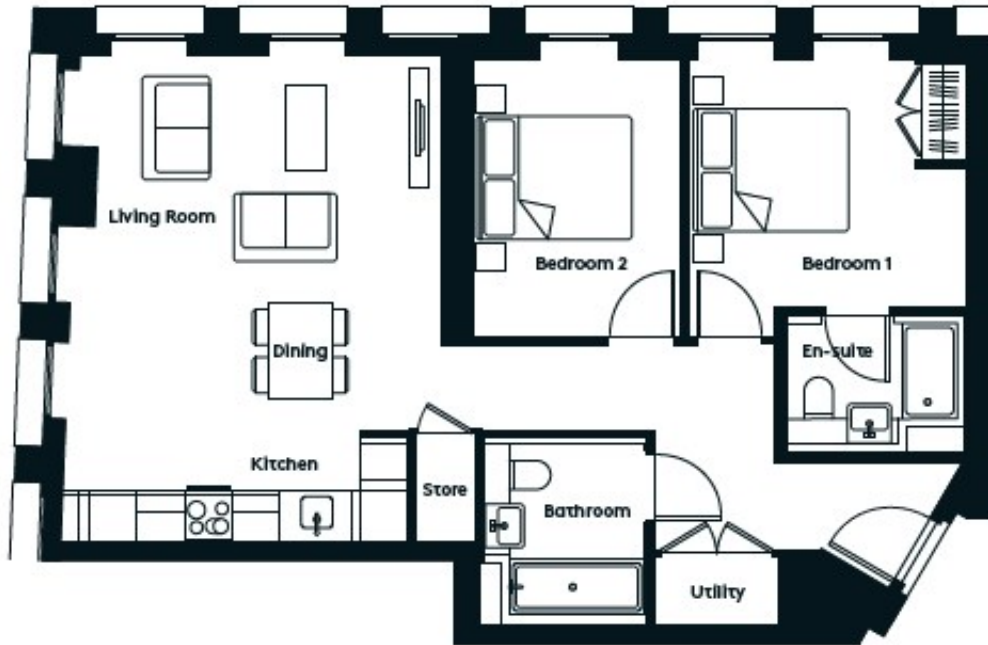


Aihomes.

LT257690MNS, 44 Whitworth Street, Manchester



Aihomes.



Energy Efficiency Rating		
	Current	Potential
<i>Very energy efficient - lower running costs</i>		
(92 plus) A		
(81-91) B		
(69-80) C		
(55-68) D		
(39-54) E		
(21-38) F		
(1-20) G		
<i>Not energy efficient - higher running costs</i>		
England & Wales	EU Directive 2002/91/EC	

EPC Rating:
Council Tax Band: E

CONTACT

5th floor, Empress Business Center
380 Chester Road
Manchester
M16 9EA

E: info@aihomes.uk

T: 0127 332 8069

