



LINKS ROAD, SW17

£665,000

- Four bedrooms
- Two bathrooms
- Freehold
- Open-plan kitchen/diner
- Private garden
- Energy rating: C





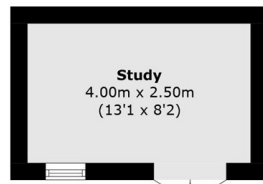
## ABOUT THE HOME

A beautiful family home, decorated with a soulful and homely design. The property has four bedrooms, the principle bedroom located in a large attic conversion and has access to an en suite bathroom. The other bedrooms are located on the first floor, two of which are double bedrooms with all of them in close proximity to the family bathroom. This property has a large reception room which covers the front of the ground floor. The ground floor has had a conservatory extension which provides a beautiful open design kitchen/dining area. From here, doors lead out to the large decked garden, which offers ample space for outdoor dining and entertaining. The garden also benefits from an outbuilding, ideal for use as a home office, studio or additional storage.

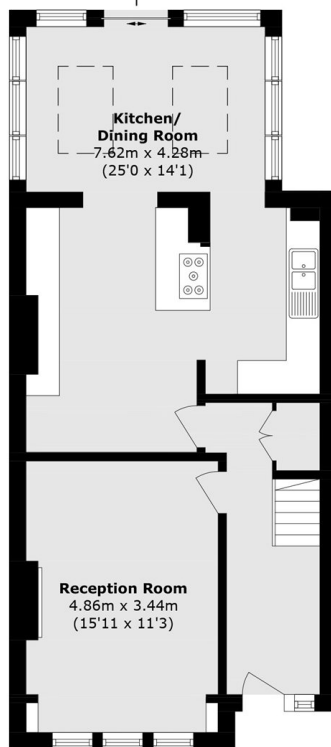
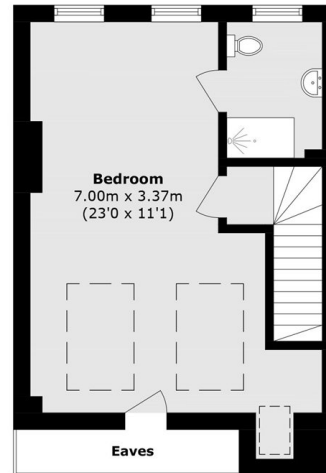
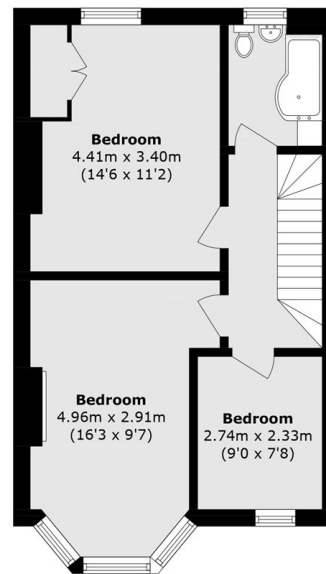
The family home is located on Links Road, a well connected and sort after area in Tooting. The location offers multiple schools with easy access and additionally has great transport links due to Tooting station being near by. Additionally Figges Marsh is a great local green space in close proximity to the house.






**Ground Floor**

 To Garden
   


**Ground Floor**

**Second Floor**

**First Floor**

Total area (approx.): 146.3 sq. m (1574.7 sq. ft)

Outbuilding area (approx.): 10.0 sq. m (107.6 sq. ft)

(Excluding Eaves)

**JACKSONS TOOTING**

 3 Upper Tooting Road, London,  
SW17 7TS

Sales: 020 8487 3175

Lettings: 020 8487 3176

Energy Rating: We aim to make our particulars both accurate and reliable. However they are not guaranteed; nor do they form part of an offer or contract. If you require clarification on any points then please contact us, especially if you're traveling some distance to view. Please note that appliances and heating systems have not been tested and therefore no warranties can be given as to their good working order.