



## Holloway Road, N7

£275,000

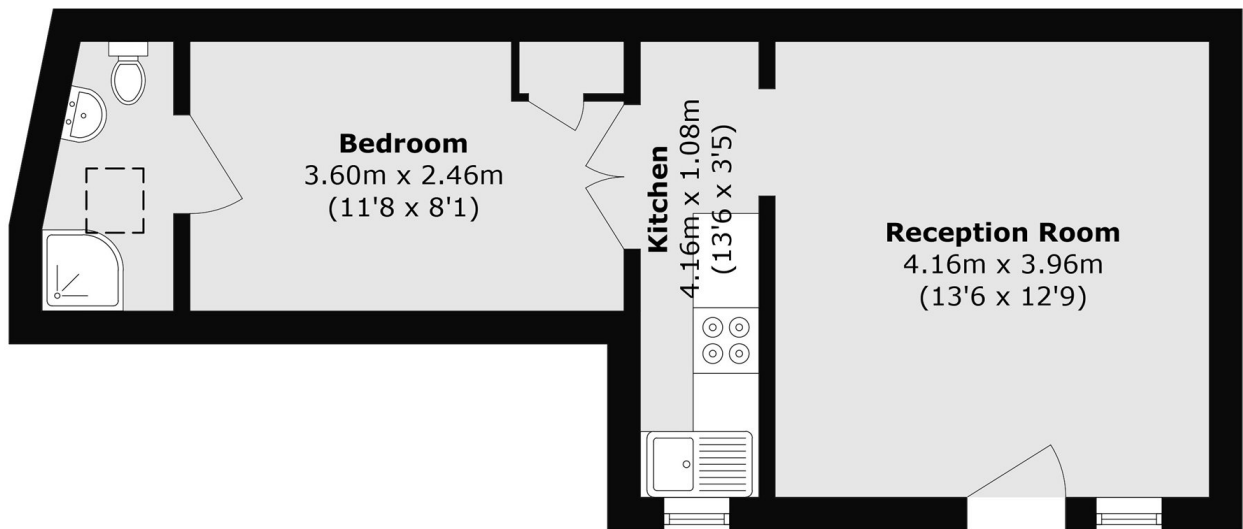
A charming studio/one-bedroom flat nestled on Holloway Road. Set within a well-maintained block of just nine residential units, this home offers smart urban living with excellent transport links.

Ideally located with transport links to the city and west end. Holloway Road (Piccadilly) and Highbury & Islington stations (Victoria and overground) are on your doorstep along with easy access to a wide range of local shops, cafés, and green spaces such as Highbury Fields.

### Features

- Secure Entry
- Separate Kitchen
- Studio
- Separate Living Area
- Ground Floor

# Holloway Road, London, N7



Total area (approx.): 34.7 sq. m (373.5 sq. ft)