



## Craven Park, NW10

£253 Per week

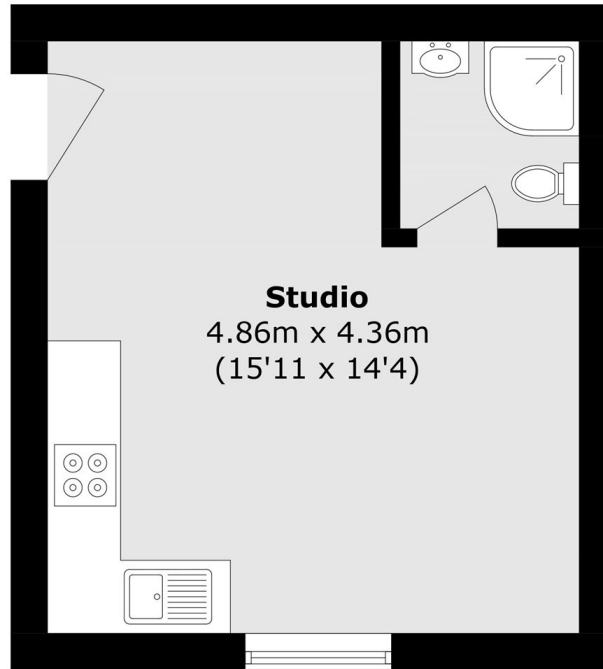
A newly refurbished fully self contained studio on the first floor of this impressive building.

Craven Park provides access to an array of shops, cafe's and restaurants, with transport links including Harlesden (Bakerloo & Overground) and many bus routes.

### Features

Studio  
First Floor  
Self contained  
Wooden Floors  
Great Location  
Refurbished

# Craven Park, London, NW10



Total area (approx.): 21.1 sq. m (227.1 sq. ft)