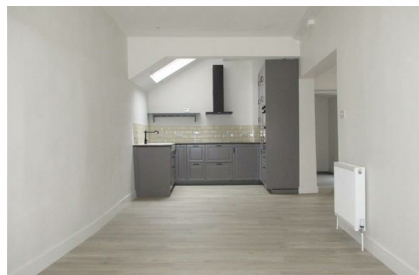
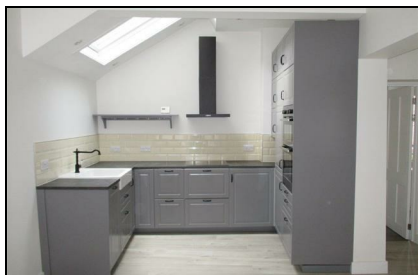


High Street
Sandwich
CT13 9EG

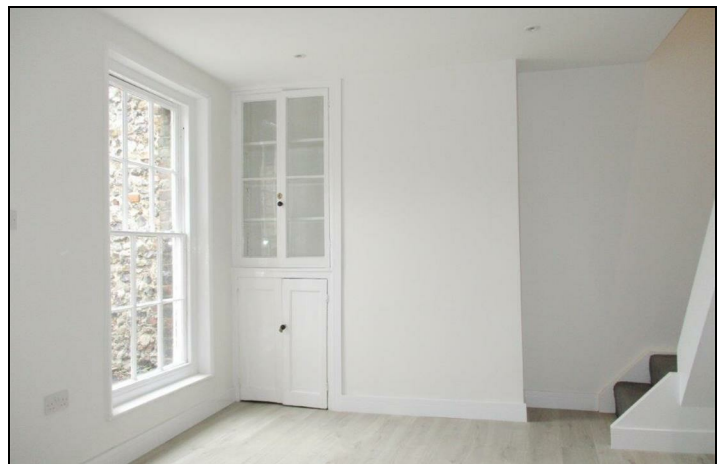
£1,500 PCM

Finn's
2 Market Street
Sandwich
CT13 9DA
t: 01304 614471
e: sandwich@finns.co.uk
www.finns.co.uk



Located on the historic Sandwich High Street, this three-bedroom terraced home is a Grade II Listed property rich in period character. The accommodation comprises two reception rooms, kitchen/diner and cloakroom/utility room on the ground floor with three bedrooms, en-suite shower room and family bathroom on the first floor. The property has gas central heating and a small courtyard to the rear.

- 3 Bedroom Grade II Listed Property
- 3 Reception Rooms
- Unfurnished Property
- Charming period features
- Gas C/H
- Rear courtyard
- Dover District Council Tax Band D
- EPC C
- Deposit £1730
- Available end of June



Energy Efficiency Rating		
	Current	Potential
Very energy efficient - lower running costs		
(92 plus) A		
(81-91) B		87
(69-80) C	70	
(55-68) D		
(39-54) E		
(21-38) F		
(1-20) G		
Not energy efficient - higher running costs		
England & Wales	EU Directive 2002/91/EC	

Viewing: By appointment through Finn's, Sandwich
Telephone: 01304 614471

Council Tax: D

Date: These particulars were prepared on: 11th June 2026

Agent's Note: Wherever appliances or services, fixtures or fittings have been mentioned in these particulars they have not been tested by us. Measurements should not be relied upon. Unless specifically referred to above all fitted carpets, curtains, fixtures and fittings and garden outbuildings and ornaments are excluded from the sale. None of the statements in these particulars are to be relied upon as statements or representatives of fact. Photographs are for guidance only and do not imply items shown are included in the sale - some aspects may have changed since they were taken. No person in the employment of Finn's has authority to give any representation or warranty in relation to this property.

FINN'S CANTERBURY
82 Castle Street
Canterbury
Kent CT1 2QD
Lettings: 01227 452111

FINN'S SANDWICH
2 Market Street
Sandwich
Kent CT13 9DA
Lettings: 01304 614471

FINN'S ST NICHOLAS AT WADE
The Packhouse
Wantsum Way
St Nicholas at Wade
Kent CT7 0NE
01843 848320

