



Thistley Court, Glasher Street, London SE8 3JW

 2 Bedrooms  2 Bathrooms  1 Reception Room



Thistley Court, London SE8

Leasehold (163 years remaining)

A well-appointed apartment in Deptford, perfectly positioned for Greenwich's historic charm and excellent transport links to Canary Wharf and Central London.

Key Features

- 2 Bedrooms, 2 Bathrooms
- No chain
- Excellent location
- Council Tax: **D**
- Service Charge: **£3,600 P/A**
- Peppercorn ground rent
- Excellent transport links
- EPC: **B**

Situated in the heart of Deptford, this apartment at Thistley Court offers an excellent opportunity for buyers seeking connectivity and accessibility in one of Southeast London's most dynamic neighbourhoods. The property benefits from its position within easy walking distance of Greenwich, where centuries of maritime heritage meet contemporary riverside living.

Spanning 753 square feet, this residence provides well-proportioned accommodation with two bathrooms, offering convenience for modern living. The elevated position ensures good natural light throughout.



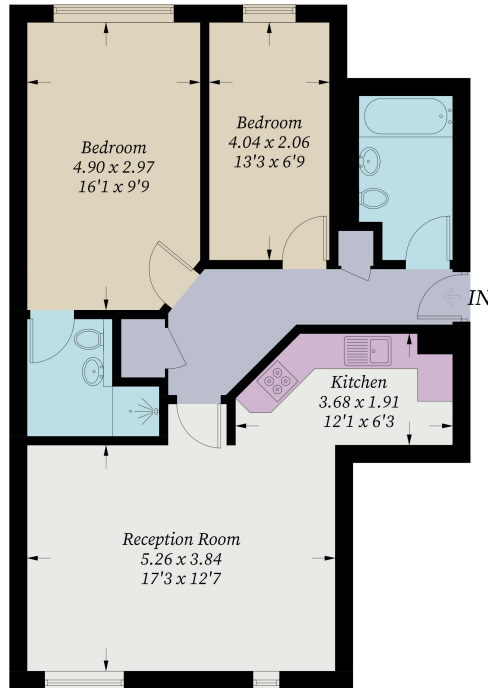






Thistley Court, SE8

Approximate Gross Internal Area = 70.0 sq m / 753 sq ft



Third Floor

Illustration for identification purposes only. Measurements are approximate, not to scale. Fourlabe.co © (ID1312356)

Sales, Lettings & Property Management

residential.jll.co.uk

