



Goldhawk Road, W12

£669 Per week

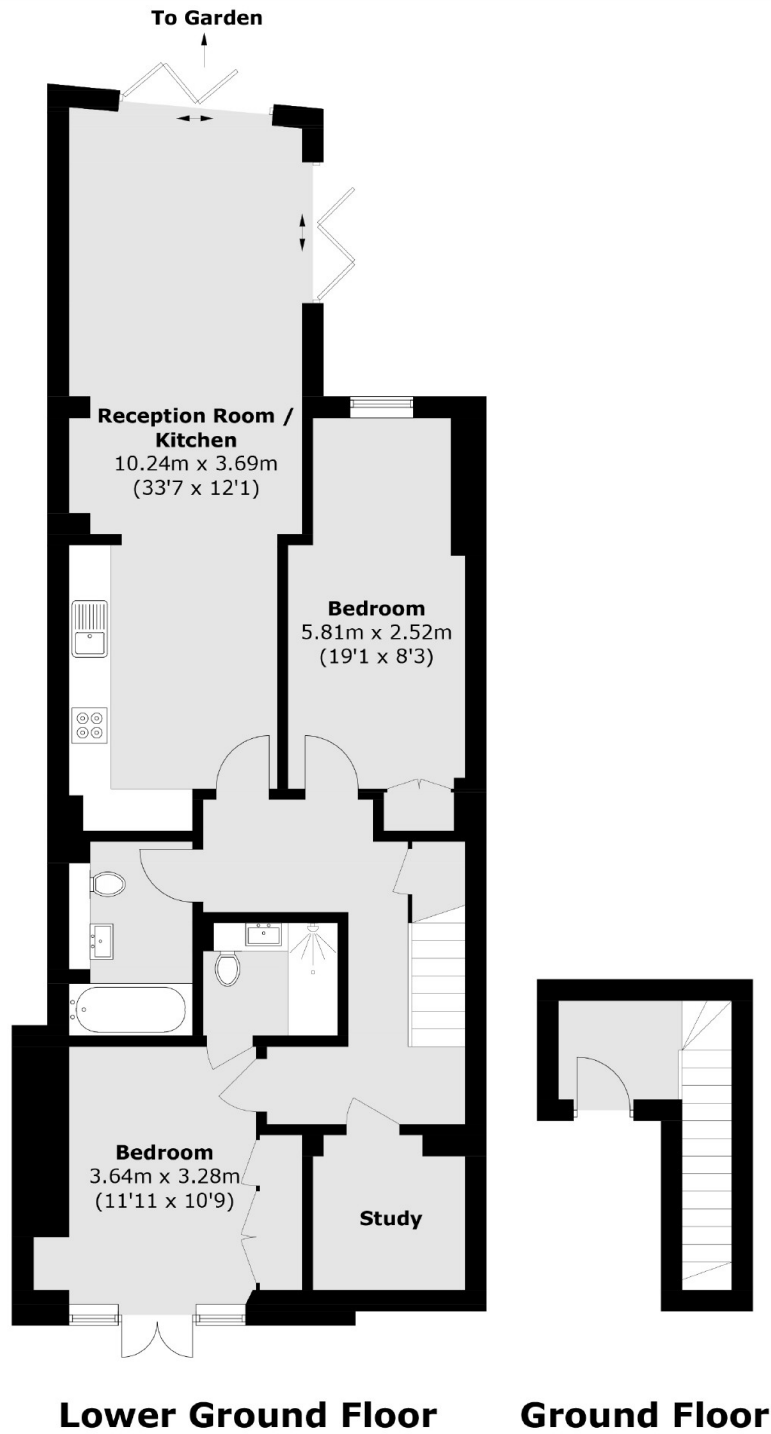
A large and modern two bedroom apartment finished to a high standard. The property benefits from two bathrooms and open plan living area that leads onto a private large garden.

The property is conveniently located on Goldhawk Road which offers easy access to the underground Station (Hamersmith & City/Circle Line).

Features

- Modern Finish
- Two Double Rooms
- En-Suite Bathroom
- Private Garden
- Fully Integrated Kitchen
- On site parking

Goldhawk Road,
London, W12



Total area (approx.): 89.9 sq. m (967.6 sq. ft)