

## Broadmead, Callington, PL17

Guide Price £240,000

4 1 1

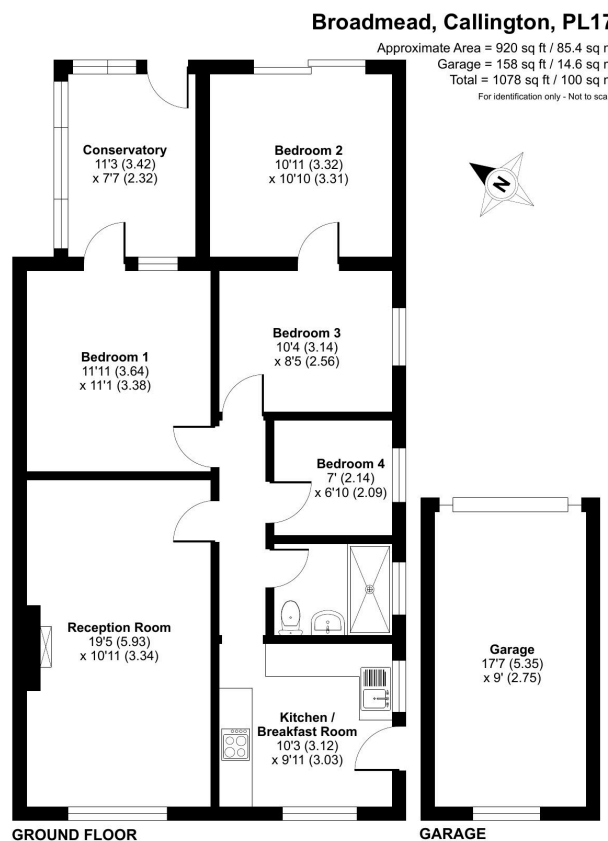


A wonderful opportunity to purchase a four-bedroom semi-detached bungalow, situated in a popular residential area close to Callington Town Centre. The property benefits from a private driveway, a garage, a west-facing garden, and is offered to the market with no onward chain.

Callington is a charming Cornish town in a prime location within South East Cornwall, just 15 miles from Plymouth City Centre. The town offers a wide range of amenities including a health centre, sports centre/gym, supermarkets, church, and both primary and secondary schools.

## Key Features

- TO ARRANGE A VIEWING PLEASE QUOTE BL0650
- Four Bedrooms
- Garage
- West-Facing Garden
- Flexible & Versatile Accomodation
- Semi-Detached Bungalow
- Driveway
- No Onward Chain
- Popular Residential Area
- Freehold



Floor plan produced in accordance with RICS Property Measurement Standards incorporating International Property Measurement Standards (IPMS) Residential. © richcom 2025. Produced for Ben Estates T/A Ben Langton Powered By exp. REF: 1343088