



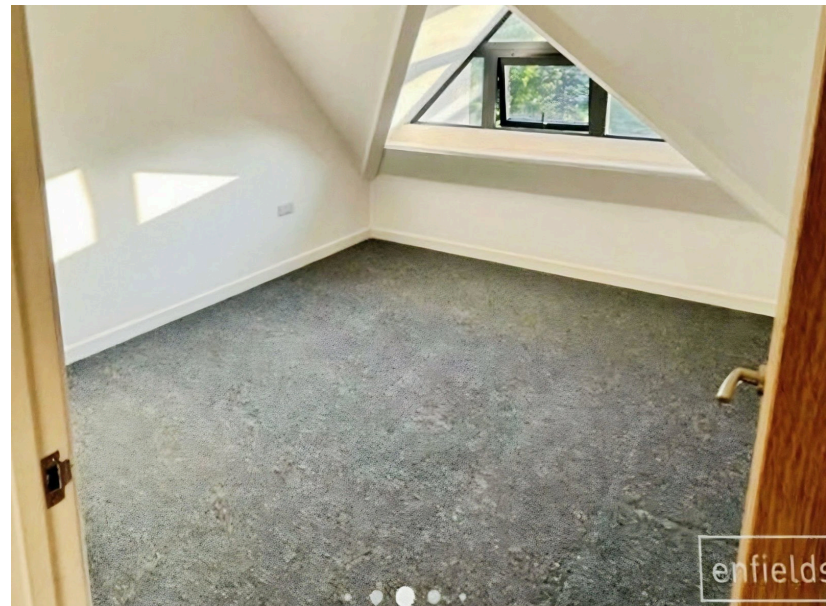
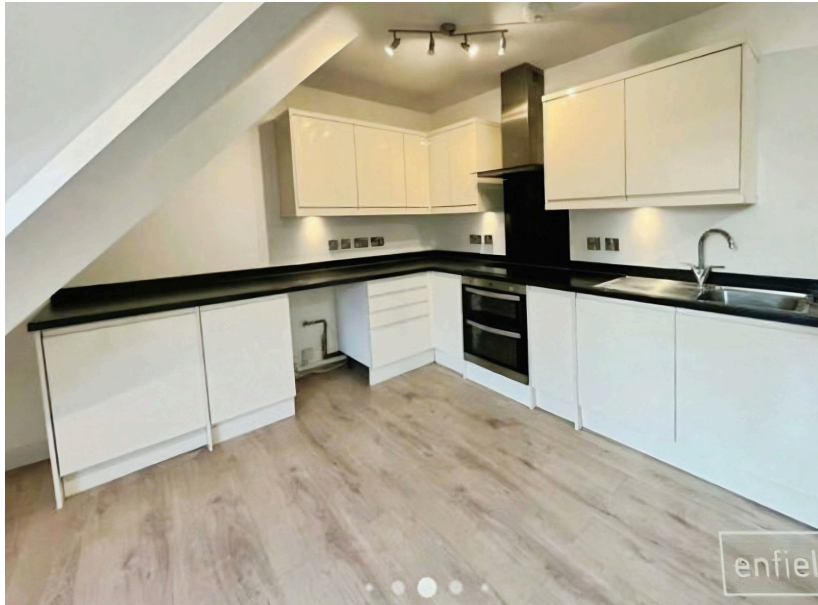
enfields

Enfields Hythe  
3 Marsh Parade,  
Hythe, Southampton,  
Hampshire, SO45 6AN  
023 8084 9210  
sales-hythe@enfields.co.uk

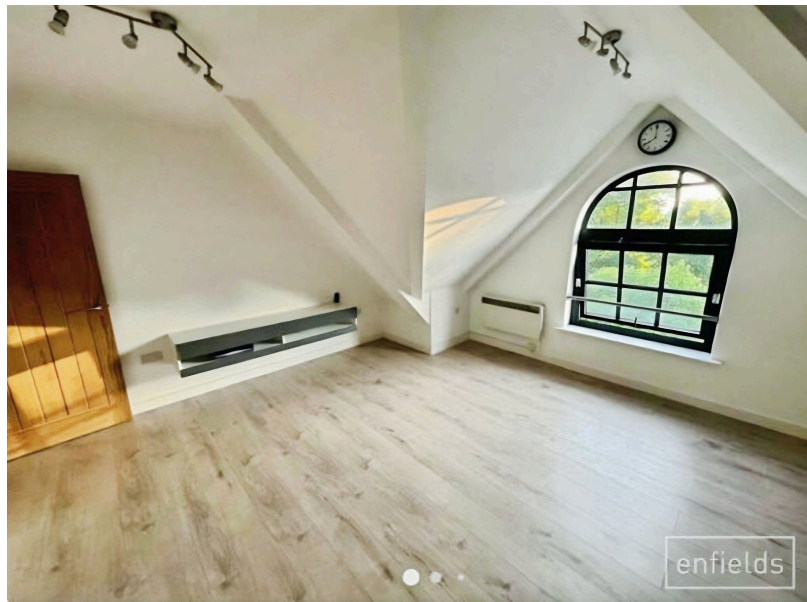
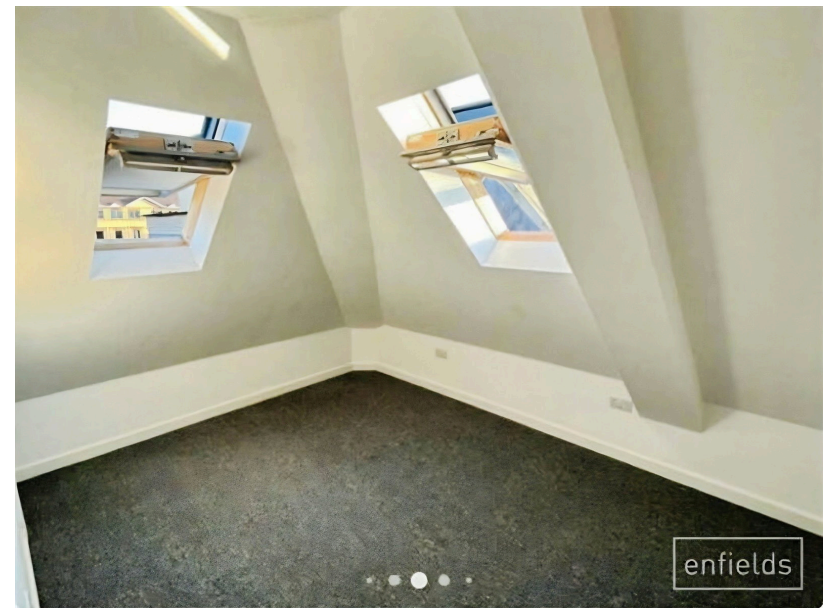
enfields

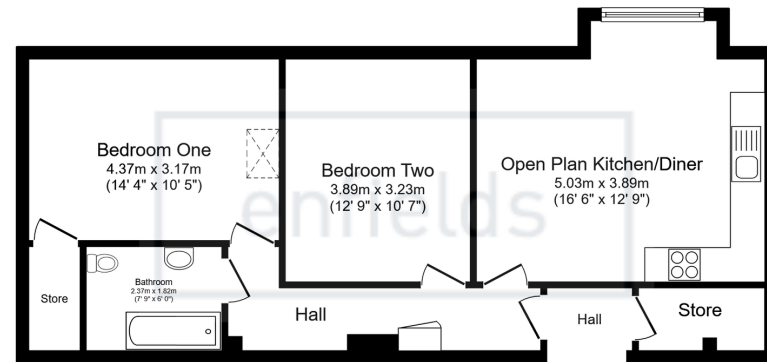
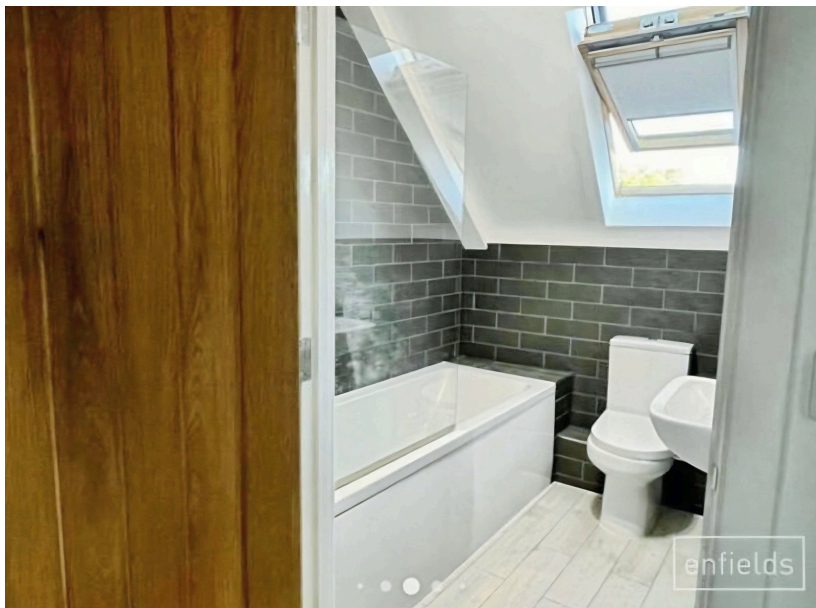
Flat 26, Hampton House, 16, St. Marys Place,  
Guide Price £170,000

🛏 2 🚿 1 🚗 1



- Two-bedroom third-floor flat
- Open-plan living and dining area
- Bright interior with large windows and natural light
- Neutral décor throughout
- Modern bathroom
- Built-in storage
- Double glazing for added comfort
- One allocated undercroft parking space
- Views over parks and cityscape
- Prime location near Hoglands Park and local amenities





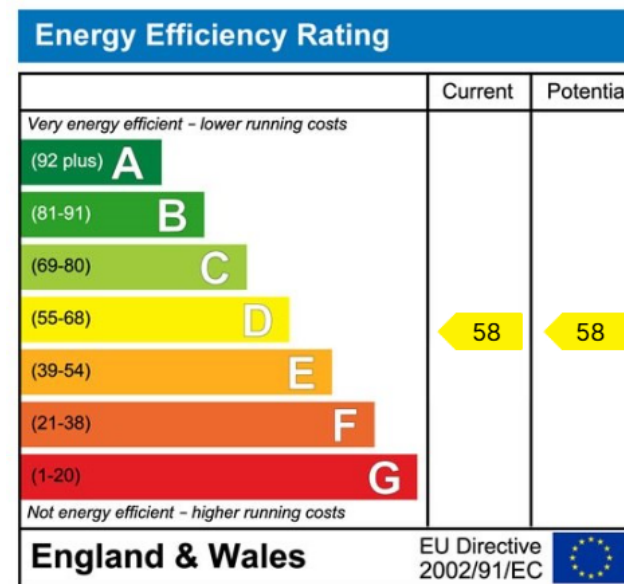
**Floor Plan**  
Floor area 66.8 sq.m. (719 sq.ft.)

Total floor area: 66.8 sq.m. (719 sq.ft.)

This floor plan is for illustrative purposes only. It is not drawn to scale. Any measurements, floor areas (including any total floor area), openings and orientations are approximate. No details are guaranteed, they cannot be relied upon for any purpose and do not form any part of any agreement. No liability is taken for any error, omission or misstatement. A party must rely upon its own inspection(s). Powered by www.Propertybox.io

enfields

A well-presented two-bedroom third-floor flat offering bright, open-plan living in a central Southampton location. Featuring allocated undercroft parking and views over nearby parks and the city, this home is ideal for modern urban living.



[www.enfields-southampton.co.uk](http://www.enfields-southampton.co.uk)



It is Enfields policy to respect any sole agency currently in force and we would not be able to commence marketing until this has expired or been terminated. If you fail to terminate any previous agreement you could be liable for two sets of fees. Enfields Hythe is a trading name of YTF LTD Registered office: 345 Shirley Road, Southampton, Hampshire, England, SO15 3JD. Company Registration No: 10459987. VAT Registration No: 281 2975 81.

Enfields Lettings - Embley Management LTD T/A Enfields. Registered Address: 345 Shirley Road, Southampton, Hampshire, England, SO15 3JD. Company Registration No: 14847604. VAT Registration No: 439 8546 45.