



Moovahome.co.uk

Dryden Street, Swindon, SN1 5LA

£1,050PCM (Deposit: £1,050)

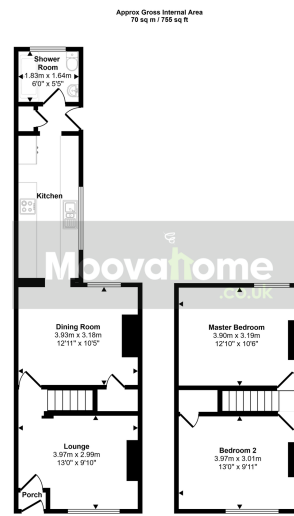
🛏️ 2 🚿 1 🚻 1



Tax Band: B Furnished: Unfurnished

Located in the heart of Swindon, this modernized two bedroom mid-terrace property offers a perfect mix of comfort and convenience. Ideally located within walking distance to the town centre, train station, and local amenities, this home is ideal for first-time and investment purchases.

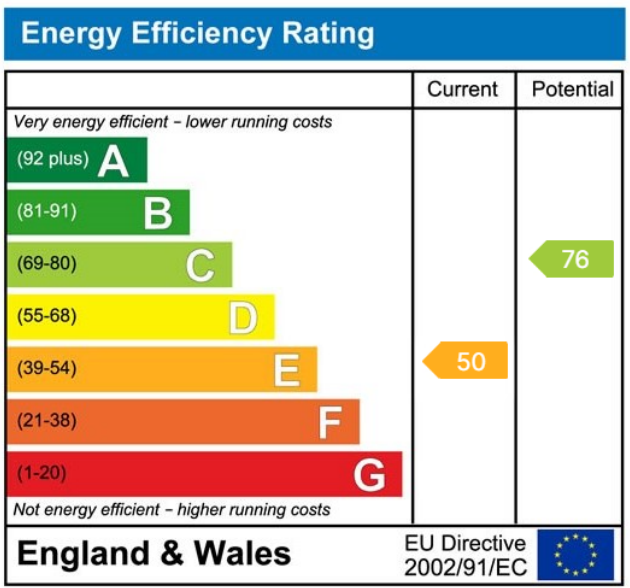




Ground Floor
Approx 42 sq m / 450 sq ft

First Floor
Approx 28 sq m / 305 sq ft

This blueprint is only for illustrative purposes and is not to scale. Measurements of rooms, doors, windows, and any items are approximate and no responsibility is taken for any error, omission or the statement. Some of items such as bathroom suite are representations only and may not look like the real items. Made with Made Simple 3D.



www.moovahome.co.uk

Unit 20 Ergo Business Park, Kelvin Road, Swindon SN3 3JW
 Telephone 01793 512345
hello@moovahome.co.uk

Lettings: Mr A. Cain T/A Moovahome
 Moovahome, Unit 20 Ergo Business Park, Kelvin Road, Swindon SN3 3JW

Sales: Moovahome is a trading name of Moovahome Ltd.
 Registered Office: Unit 20 Ergo Business Park, Kelvin Road, Swindon SN3 3JW