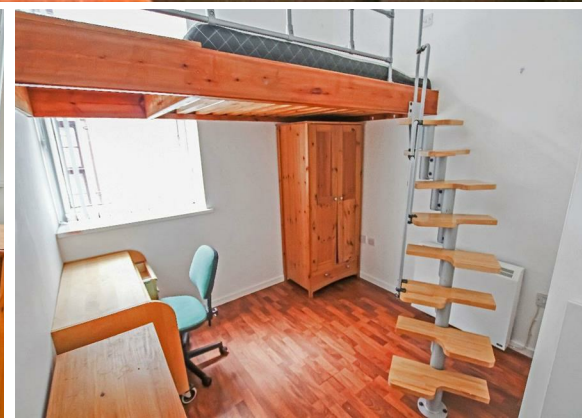
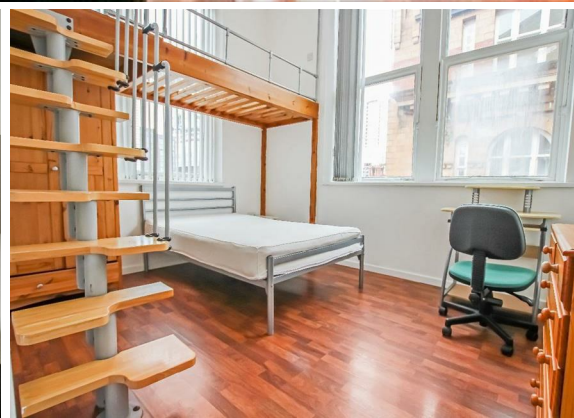




**3 Bed
Apartment
located in 71
Whitworth Street**

£1,450 PCM



 **NPP
RESIDENTIAL**

EPC Rating:
Council Tax Band: D

Energy Efficiency Rating		
	Current	Potential
<i>Very energy efficient - lower running costs</i>		
(92 plus) A		
(81-91) B		
(69-80) C		
(55-68) D		
(39-54) E		
(21-38) F		
(1-20) G		
<i>Not energy efficient - higher running costs</i>		
EU Directive 2002/91/EC 		
England & Wales		

DIRECTIONS

CONTACT

22 Lloyd Street
Manchester
M2 5WA

E: info@nppresidential.co.uk
T: 0161 639 0059
<https://nppresidential.co.uk/>

