



## Essex Road, N1

£825,000

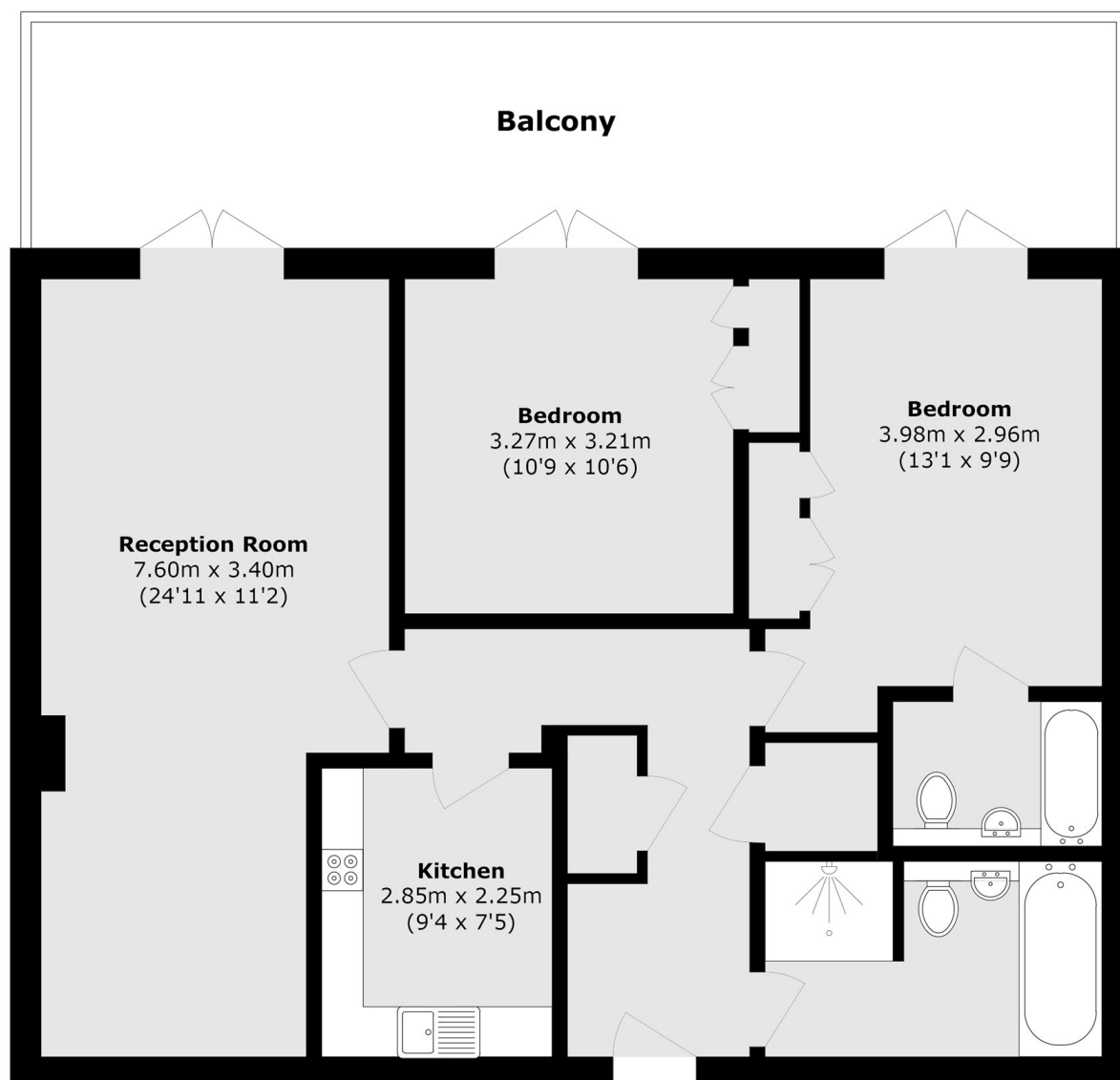
A two bedroom, two bathroom apartment in the ideally located Angel on The Green development. This ground floor flat has a large private terrace overlooking the manicured communal garden, a 24hr concierge and allocated underground parking.

Located in the heart of Angel and tucked away off of Islington's vibrant Upper Street, known for its bars, cafés, restaurants, and boutique shops, the property offers access to excellent transport links. Angel Station is under half a mile away, as well as convenient connections from Highbury & Islington Station and Essex Road Station.

### Features

- Central Angel
- 24h Concierge
- Private Terrace
- Underground Parking
- Communal Garden
- Long Lease

# Essex Road, London, N1



Total area (approx.): 78.7 sq. m (847.1 sq. ft)

Balcony area (approx.): 23.4 sq. m (251.8 sq. ft)

## Dexters

Islington  
76 Upper Street  
London  
N1 0NU  
Sales  
020 7483 6373

Energy Rating: E. We aim to make our particulars both accurate and reliable. However they are not guaranteed; nor do they form part of an offer or contract. If you require clarification on any points then please contact us, especially if you're traveling some distance to view. Please note that appliances and heating systems have not been tested and therefore no warranties can be given as to their good working order.

 **RICS** | Regulated  
Estate Agent  
and Letting Agent

[dexters.co.uk](https://www.dexters.co.uk)